



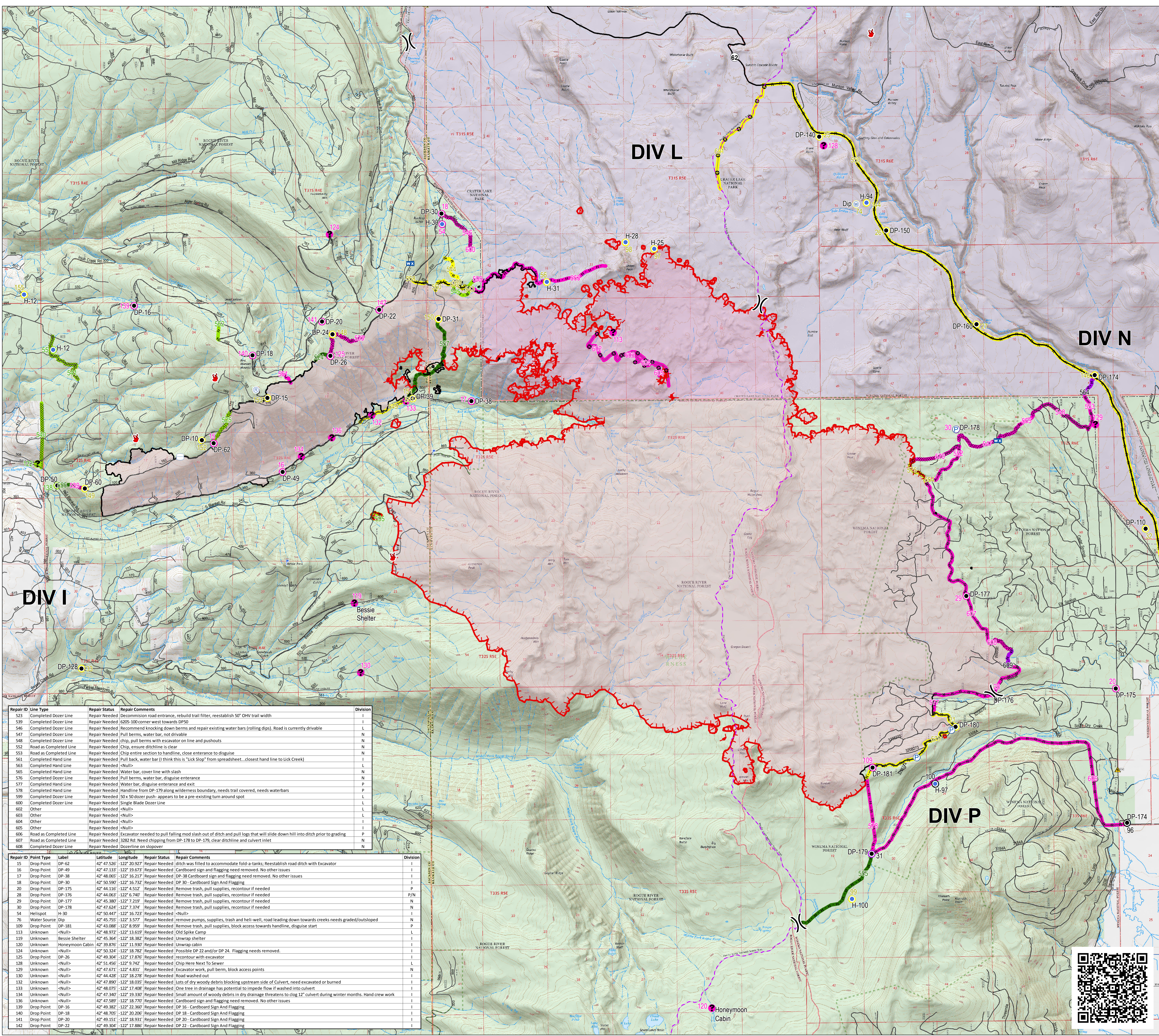
**REPAIR MAP**  
**BLANKET CREEK FIRE**  
**HIGH CASCADES**  
**COMPLEX EAST ZONE**  
**33,322 ACRES**  
**OR-FWF-000514**  
**SEPTEMBER 23, 2017**

- Structures
- Drop Point
- Helispot
- Lookout
- Mobile Weather Unit
- Pump
- Repeater
- Safety Zone
- Staging
- Water Source
- Water Tank
- Unknown
- ⌋ Division Break
- Uncontrolled Fire Edge
- Completed Line
- Completed Dozer Line
- Completed Hand Line
- Road as Completed Line
- Other
- PacificCrestTrail
- Wilderness

- Repair Points**
- Completed - Inspected
  - Completed - Ready for Inspection
  - No Repair Needed
  - Repair Needed
  - Not Evaluated

- Repair Lines**
- Completed - Inspected
  - Completed - Ready for Inspection
  - No Repair Needed
  - Repair Needed
  - Not Evaluated

- Land Status**
- U.S. Forest Service
  - National Park Service
  - Private/Unknown



Repair ID	Line Type	Repair Status	Repair Comments	Division
523	Completed Dozer Line	Repair Needed	Decommission road entrance, rebuild trail filter, reestablish 50' OHV trail width	I
539	Completed Dozer Line	Repair Needed	6205-100 corner west towards DP50	I
546	Completed Dozer Line	Repair Needed	Recommend knocking down berms and repair existing water bars (rolling dips). Road is currently drivable	L
547	Completed Dozer Line	Repair Needed	Pull berms, water bar, not drivable	N
548	Completed Dozer Line	Repair Needed	chip, pull berms with excavator on line and pushouts	N
552	Road as Completed Line	Repair Needed	Chip, ensure ditchline is clear	N
553	Road as Completed Line	Repair Needed	Chip entire section to handline, close entrance to disguise	N
561	Completed Hand Line	Repair Needed	Pull back, water bar (I think this is "lick Slop" from spreadsheet...closest hand line to Lick Creek)	I
563	Completed Hand Line	Repair Needed	<Null>	I
565	Completed Hand Line	Repair Needed	Water bar, cover line with slash	N
576	Completed Dozer Line	Repair Needed	Pull berms, water bar, disguise entrance	N
577	Completed Hand Line	Repair Needed	Water bar, disguise entrance and exit	P
578	Completed Hand Line	Repair Needed	Handline from DP-179 along wilderness boundary, needs trail covered, needs waterbars	P
599	Completed Dozer Line	Repair Needed	55x 50 dozer push- appears to be a pre-existing turn around spot	L
600	Completed Dozer Line	Repair Needed	Single Blade Dozer Line	L
602	Other	Repair Needed	<Null>	L
603	Other	Repair Needed	<Null>	L
604	Other	Repair Needed	<Null>	I
605	Other	Repair Needed	<Null>	I
606	Road as Completed Line	Repair Needed	Excavator needed to pull falling mod slash out of ditch and pull logs that will slide down hill into ditch prior to grading	P
607	Road as Completed Line	Repair Needed	3282 Rd: Need chipping from DP-178 to DP-179, clear ditchline and culvert inlet	N
608	Completed Dozer Line	Repair Needed	Dozerline on slopper	N

Repair ID	Point Type	Label	Latitude	Longitude	Repair Status	Repair Comments	Division
15	Drop Point	DP-62	42° 47.526'	-122° 20.927'	Repair Needed	ditch was filled to accommodate fold-a-tanks; Reestablish road ditch with Excavator	I
16	Drop Point	DP-49	42° 47.133'	-122° 16.673'	Repair Needed	Cardboard sign and flagging need removed. No other issues	I
17	Drop Point	DP-38	42° 48.005'	-122° 16.217'	Repair Needed	DP-38 Cardboard sign and flagging need removed. No other issues	I
18	Drop Point	DP-30	42° 50.590'	-122° 16.732'	Repair Needed	DP 30 - Cardboard sign and flagging	I
20	Drop Point	DP-175	42° 44.110'	-122° 4.532'	Repair Needed	Remove trash, pull supplies, recontour if needed	I
28	Drop Point	DP-176	42° 44.063'	-122° 6.740'	Repair Needed	Remove trash, pull supplies, recontour if needed	P/N
29	Drop Point	DP-177	42° 45.380'	-122° 7.219'	Repair Needed	Remove trash, pull supplies, recontour if needed	N
30	Drop Point	DP-178	42° 47.624'	-122° 7.374'	Repair Needed	Remove trash, pull supplies, recontour if needed	N
54	Helispot	H-30	42° 50.447'	-122° 16.723'	Repair Needed	<Null>	I
76	Water Source	Dip	42° 45.755'	-122° 3.577'	Repair Needed	remove pumps, supplies, trash and heli-well, road leading down towards creeks needs graded/outsloped	N
109	Drop Point	DP-181	42° 41.086'	-122° 8.959'	Repair Needed	Remove trash, pull supplies, block access towards handline, disguise start	P
113	Unknown	<Null>	42° 48.972'	-122° 13.619'	Repair Needed	Old Spike Camp	I
119	Unknown	Bessie Shelter	42° 45.364'	-122° 18.382'	Repair Needed	Unwrap shelter	I
120	Unknown	Honeymoon Cabin	42° 39.876'	-122° 11.930'	Repair Needed	Unwrap cabin	I
124	Unknown	<Null>	42° 50.324'	-122° 18.782'	Repair Needed	Possible DP 22 and/or DP 24. Flagging needs removed.	I
125	Drop Point	DP-26	42° 44.304'	-122° 17.876'	Repair Needed	recontour with excavator	I
128	Unknown	<Null>	42° 51.456'	-122° 9.742'	Repair Needed	Chip Here Next To Sewer	I
129	Unknown	<Null>	42° 47.671'	-122° 4.831'	Repair Needed	Excavator work, pull berm, block access points	N
130	Unknown	<Null>	42° 44.428'	-122° 18.278'	Repair Needed	Road washed out	I
132	Unknown	<Null>	42° 47.890'	-122° 18.035'	Repair Needed	Lots of dry woody debris blocking upstream side of Culvert, need excavated or burned	I
133	Unknown	<Null>	42° 44.070'	-122° 17.406'	Repair Needed	One tree in drainage has potential to impede flow if washed into culvert	I
134	Unknown	<Null>	42° 47.240'	-122° 18.330'	Repair Needed	Small amount of woody debris in dry drainage threatens to clog 12" culvert during winter months. Hand crew work	I
136	Unknown	<Null>	42° 47.589'	-122° 18.770'	Repair Needed	Cardboard sign and flagging need removed. No other issues	I
139	Drop Point	DP-16	42° 49.382'	-122° 22.360'	Repair Needed	DP 16 - Cardboard Sign And Flagging	I
140	Drop Point	DP-18	42° 48.705'	-122° 20.206'	Repair Needed	DP 18 - Cardboard Sign And Flagging	I
141	Drop Point	DP-20	42° 49.151'	-122° 18.931'	Repair Needed	DP 20 - Cardboard Sign And Flagging	I
142	Drop Point	DP-22	42° 49.304'	-122° 17.886'	Repair Needed	DP 22 - Cardboard Sign And Flagging	I

