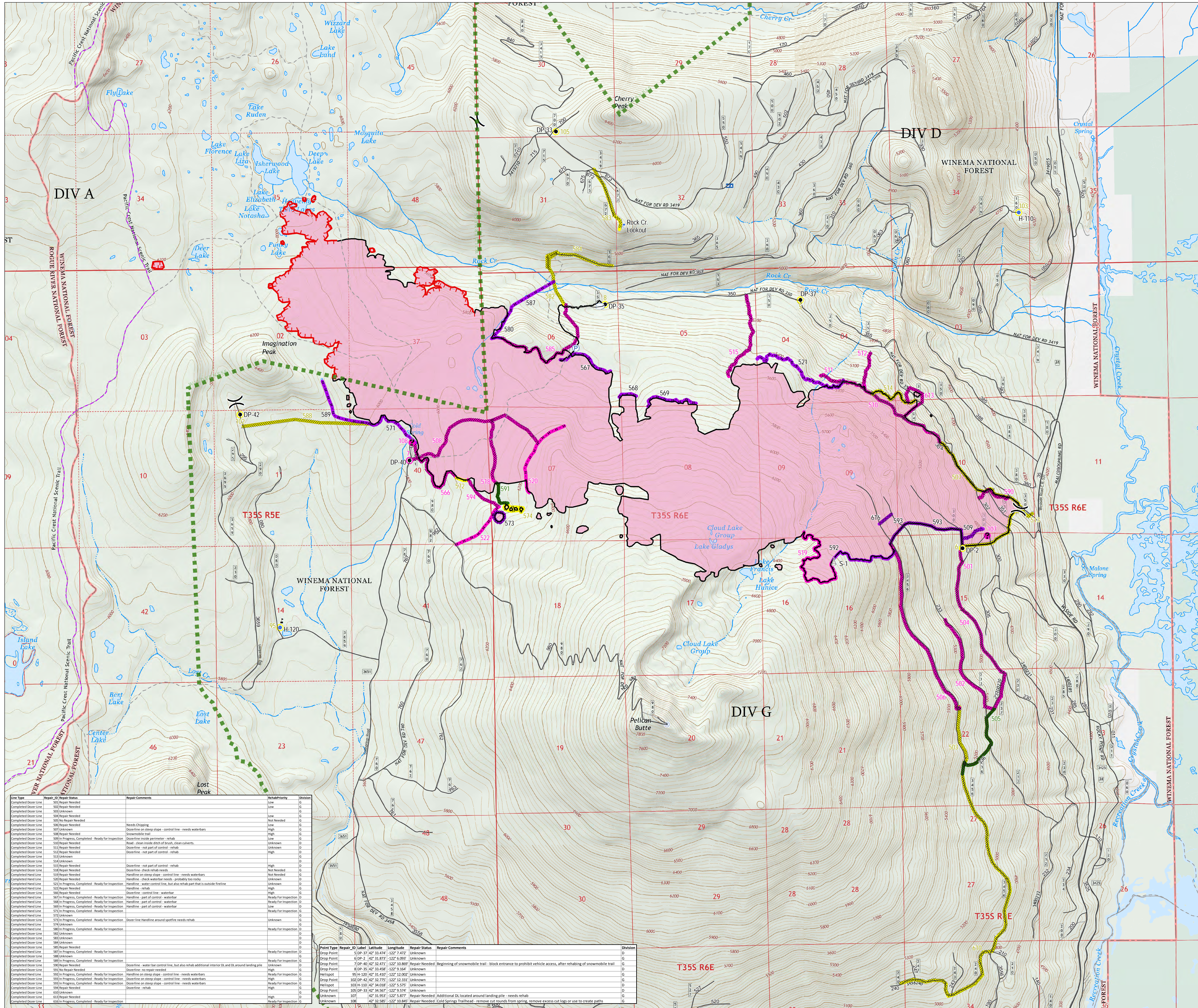




Ops/Repair Map
North Pelican Fire
High Cascades
Complex East Zone
OR-FWF-000514
September 24, 2017

- Drop Point
 - Helispot
 - ⚠ Lookout
 - Ⓜ Mobile Weather Unit
 - Ⓟ Pump
 - Ⓡ Repeater
 - Ⓢ Sling Site
 - Ⓣ Water Tank
 - Ⓤ Value at Risk
 - Ⓥ Unknown
 - Ⓦ Division Break
- Uncontrolled Fire Edge
 - Completed Line
 - ⊘ Completed Dozer Line
 - ⊘ Completed Hand Line
 - Fire Perimeter
 - PacificCrestTrail
 - Roads
 - Trails
 - ▨ Wilderness
- Repair Status**
- Repair Needed
 - Not Evaluated
 - Completed - Ready for Inspection
 - No Repair Needed
 - Repair Needed
 - Not Evaluated
- Land Status**
- U.S. Forest Service
 - U.S. Fish and Wildlife Service
 - Private/Unknown



Line Type	Repair ID	Repair Status	Repair Comments	Rehab/Priority	Division
Completed Dozer Line	501	Repair Needed		Low	G
Completed Dozer Line	502	Repair Needed		Low	G
Completed Dozer Line	503	Unknown		Low	G
Completed Dozer Line	504	Repair Needed		Low	G
Completed Dozer Line	505	Repair Needed		Low	G
Completed Dozer Line	506	Repair Needed		Low	G
Completed Dozer Line	507	Unknown		Low	G
Completed Dozer Line	508	Repair Needed	Needs Chipping	High	G
Completed Dozer Line	509	Repair Needed	Dozerline on steep slope - control line - needs waterbars	High	G
Completed Dozer Line	510	Progress, Completed - Ready for Inspection	Dozerline inside perimeter - rehab	High	G
Completed Dozer Line	511	Repair Needed	Road - clean inside ditch of brush, clean culverts.	Unknown	G
Completed Dozer Line	512	Repair Needed	Dozerline - not part of control - rehab	Unknown	G
Completed Dozer Line	513	Unknown	Dozerline - not part of control - rehab	High	G
Completed Dozer Line	514	Unknown		High	G
Completed Dozer Line	515	Repair Needed	Dozerline - not part of control - rehab	High	G
Completed Dozer Line	516	Repair Needed	Dozerline - check rehab needs	High	G
Completed Dozer Line	517	Repair Needed	Dozerline on steep slope - control line - needs waterbars	High	G
Completed Dozer Line	518	Repair Needed	Handline - check waterbar needs - probably too rocky	Unknown	G
Completed Hand Line	519	Progress, Completed - Ready for Inspection	Handline - water control line, but also rehab part that is outside fireline	Unknown	G
Completed Hand Line	520	Repair Needed	Handline - rehab	High	G
Completed Hand Line	521	Repair Needed	Handline - control line - waterbar	High	G
Completed Hand Line	522	Progress, Completed - Ready for Inspection	Handline - part of control - waterbar	Ready for Inspection	G
Completed Hand Line	523	Progress, Completed - Ready for Inspection	Handline - part of control - waterbar	Ready for Inspection	G
Completed Hand Line	524	Progress, Completed - Ready for Inspection	Handline - part of control - waterbar	Ready for Inspection	G
Completed Hand Line	525	Unknown	Dozer line Handline around spotfire needs rehab	Unknown	G
Completed Hand Line	526	Unknown		High	G
Completed Hand Line	527	Unknown		High	G
Completed Hand Line	528	Unknown		High	G
Completed Hand Line	529	Unknown		High	G
Completed Hand Line	530	Unknown		High	G
Completed Hand Line	531	Unknown		High	G
Completed Hand Line	532	Unknown		High	G
Completed Hand Line	533	Unknown		High	G
Completed Hand Line	534	Unknown		High	G
Completed Hand Line	535	Unknown		High	G
Completed Hand Line	536	Unknown		High	G
Completed Hand Line	537	Unknown		High	G
Completed Hand Line	538	Unknown		High	G
Completed Hand Line	539	Unknown		High	G
Completed Hand Line	540	Unknown		High	G
Completed Hand Line	541	Unknown		High	G
Completed Hand Line	542	Unknown		High	G
Completed Hand Line	543	Unknown		High	G
Completed Hand Line	544	Unknown		High	G
Completed Hand Line	545	Unknown		High	G
Completed Hand Line	546	Unknown		High	G
Completed Hand Line	547	Unknown		High	G
Completed Hand Line	548	Unknown		High	G
Completed Hand Line	549	Unknown		High	G
Completed Hand Line	550	Unknown		High	G
Completed Hand Line	551	Unknown		High	G
Completed Hand Line	552	Unknown		High	G
Completed Hand Line	553	Unknown		High	G
Completed Hand Line	554	Unknown		High	G
Completed Hand Line	555	Unknown		High	G
Completed Hand Line	556	Unknown		High	G
Completed Hand Line	557	Unknown		High	G
Completed Hand Line	558	Unknown		High	G
Completed Hand Line	559	Unknown		High	G
Completed Hand Line	560	Unknown		High	G
Completed Hand Line	561	Unknown		High	G
Completed Hand Line	562	Unknown		High	G
Completed Hand Line	563	Unknown		High	G
Completed Hand Line	564	Unknown		High	G
Completed Hand Line	565	Unknown		High	G
Completed Hand Line	566	Unknown		High	G
Completed Hand Line	567	Unknown		High	G
Completed Hand Line	568	Unknown		High	G
Completed Hand Line	569	Unknown		High	G
Completed Hand Line	570	Unknown		High	G
Completed Hand Line	571	Unknown		High	G
Completed Hand Line	572	Unknown		High	G
Completed Hand Line	573	Unknown		High	G
Completed Hand Line	574	Unknown		High	G
Completed Hand Line	575	Unknown		High	G
Completed Hand Line	576	Unknown		High	G
Completed Hand Line	577	Unknown		High	G
Completed Hand Line	578	Unknown		High	G
Completed Hand Line	579	Unknown		High	G
Completed Hand Line	580	Unknown		High	G
Completed Hand Line	581	Unknown		High	G
Completed Hand Line	582	Unknown		High	G
Completed Hand Line	583	Unknown		High	G
Completed Hand Line	584	Unknown		High	G
Completed Hand Line	585	Unknown		High	G
Completed Hand Line	586	Unknown		High	G
Completed Hand Line	587	Unknown		High	G
Completed Hand Line	588	Unknown		High	G
Completed Hand Line	589	Unknown		High	G
Completed Hand Line	590	Unknown		High	G
Completed Hand Line	591	Unknown		High	G
Completed Hand Line	592	Unknown		High	G
Completed Hand Line	593	Unknown		High	G
Completed Hand Line	594	Unknown		High	G
Completed Hand Line	595	Unknown		High	G
Completed Hand Line	596	Unknown		High	G
Completed Hand Line	597	Unknown		High	G
Completed Hand Line	598	Unknown		High	G
Completed Hand Line	599	Unknown		High	G
Completed Hand Line	600	Unknown		High	G

Point Type	Repair ID	Label	Latitude	Longitude	Repair Status	Repair Comments	Division
Drop Point	610	DP-27	42° 31.874'	-122° 7.472'	Unknown		G
Drop Point	710	DP-40	42° 32.471'	-122° 10.869'	Repair Needed	Beginning of snowmobile trail - block entrance to prohibit vehicle access, after rehabing of snowmobile trail	G
Drop Point	810	DP-35	42° 31.458'	-122° 9.164'	Unknown		G
Helispot	910	H-120	42° 31.410'	-122° 12.000'	Unknown		G
Drop Point	1010	DP-42	42° 32.779'	-122° 13.331'	Unknown		G
Helispot	1110	H-110	42° 31.018'	-122° 5.375'	Unknown		G
Drop Point	1210	DP-33	42° 34.562'	-122° 9.574'	Unknown		G
Unknown	107		42° 31.953'	-122° 5.877'	Repair Needed	Additional DL located around landing pile - needs rehab	G
Unknown	108		42° 32.581'	-122° 10.849'	Repair Needed	Cold Springs Trailhead - remove cut mounds from spring, remove excess cut logs or use to create paths	G

