



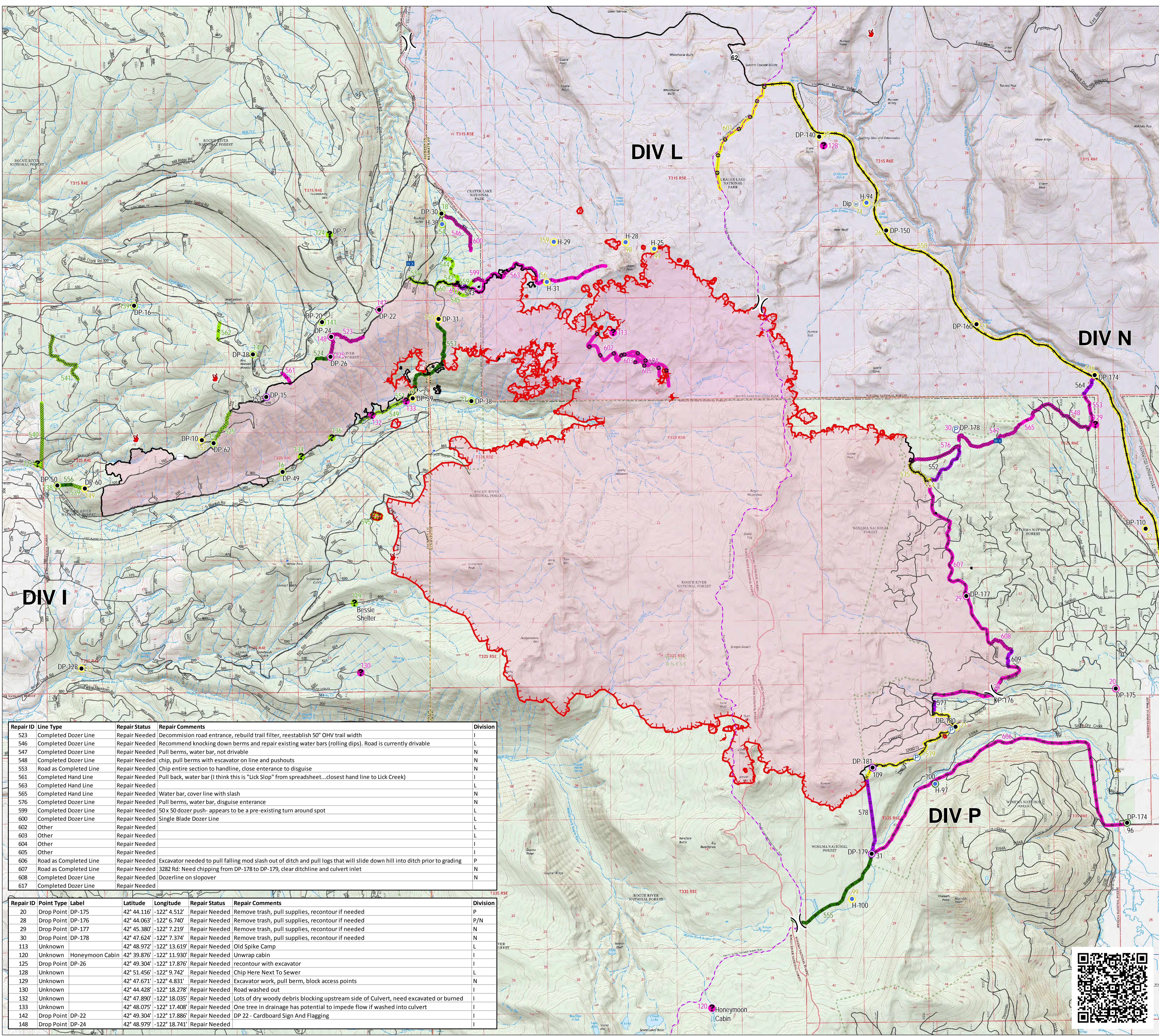
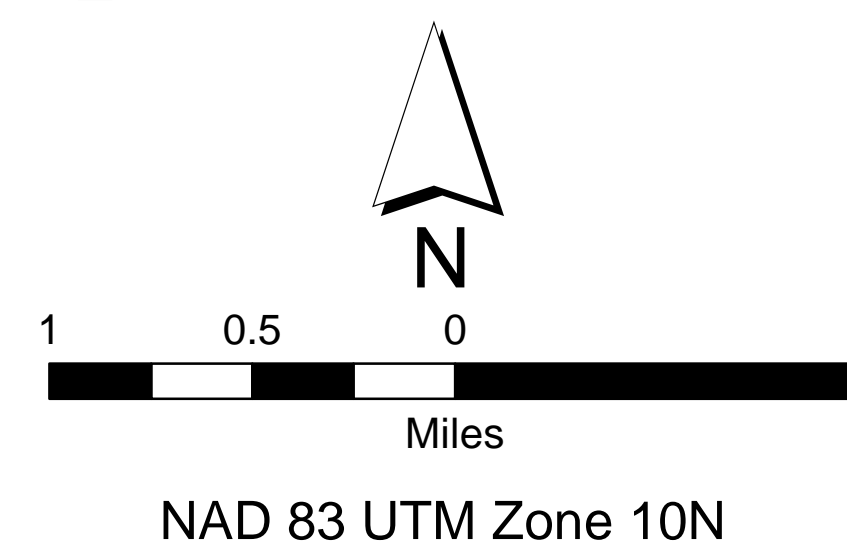
**REPAIR MAP**  
**BLANKET CREEK FIRE**  
**HIGH CASCADES**  
**COMPLEX EAST ZONE**  
**33,322 ACRES**  
**OR-FWF-000514**  
**SEPTEMBER 24, 2017**

- Structures
- Drop Point
- Helispot
- Lookout
- Mobile Weather Unit
- Pump
- Repeater
- Safety Zone
- Staging
- Water Source
- Water Tank
- Unknown
- ) ( Division Break
- Uncontrolled Fire Edge
- Completed Line
- Completed Dozer Line
- - - Completed Hand Line
- R - R - R Road as Completed Line
- Other
- - - PacificCrestTrail
- Wilderness

- Repair Points**
- Completed - Inspected
  - Completed - Ready for Inspection
  - No Repair Needed
  - Repair Needed
  - Not Evaluated

- Repair Lines**
- Completed - Inspected
  - Completed - Ready for Inspection
  - No Repair Needed
  - Repair Needed
  - Not Evaluated

- Land Status**
- U.S. Forest Service
  - National Park Service
  - Private/Unknown



Repair ID	Line Type	Repair Status	Repair Comments	Division
523	Completed Dozer Line	Repair Needed	Decommission road entrance, rebuild trail filter, reestablish 50" OHV trail width	I
546	Completed Dozer Line	Repair Needed	Recommend knocking down berms and repair existing water bars (rolling dips). Road is currently drivable	L
547	Completed Dozer Line	Repair Needed	Pull berms, water bar, not drivable	N
548	Completed Dozer Line	Repair Needed	chip, pull berms with excavator on line and pushouts	N
553	Road as Completed Line	Repair Needed	Chip entire section to handline, close entrance to disguise	N
561	Completed Hand Line	Repair Needed	Pull back, water bar (I think this is "Lick Stop" from spreadsheet...closest hand line to Lick Creek)	I
563	Completed Hand Line	Repair Needed		L
565	Completed Hand Line	Repair Needed	Water bar, cover line with slash	N
576	Completed Dozer Line	Repair Needed	Pull berms, water bar, disguise entrance	N
599	Completed Dozer Line	Repair Needed	50 x 50 dozer push- appears to be a pre-existing turn around spot	N
600	Completed Dozer Line	Repair Needed	Single Blade Dozer Line	L
602	Other	Repair Needed		L
603	Other	Repair Needed		L
604	Other	Repair Needed		I
605	Other	Repair Needed		L
606	Road as Completed Line	Repair Needed	Excavator needed to pull falling mod slash out of ditch and pull logs that will slide down hill into ditch prior to grading	P
607	Road as Completed Line	Repair Needed	3282 Rd: need chipping from DP-178 to DP-179, clear ditchline and culvert inlet	N
608	Completed Dozer Line	Repair Needed	Dozerline on sloopover	N
617	Completed Dozer Line	Repair Needed		N

Repair ID	Point Type	Label	Latitude	Longitude	Repair Status	Repair Comments	Division
20	Drop Point	DP-175	42° 44.116'	-122° 4.512'	Repair Needed	Remove trash, pull supplies, recontour if needed	P
28	Drop Point	DP-176	42° 44.063'	-122° 6.740'	Repair Needed	Remove trash, pull supplies, recontour if needed	P/N
29	Drop Point	DP-177	42° 45.380'	-122° 7.219'	Repair Needed	Remove trash, pull supplies, recontour if needed	N
30	Drop Point	DP-178	42° 47.624'	-122° 7.374'	Repair Needed	Remove trash, pull supplies, recontour if needed	N
113	Unknown		42° 48.972'	-122° 13.619'	Repair Needed	Old Spike Camp	L
120	Unknown	Honeymoon Cabin	42° 39.876'	-122° 11.930'	Repair Needed	Unwrap cabin	I
125	Drop Point	DP-26	42° 49.304'	-122° 17.876'	Repair Needed	recontour with excavator	I
128	Unknown		42° 51.456'	-122° 9.742'	Repair Needed	Chip Here Next To Sewer	L
129	Unknown		42° 47.671'	-122° 4.831'	Repair Needed	Excavator work, pull berm, block access points	N
130	Unknown		42° 44.428'	-122° 18.278'	Repair Needed	Road washed out	I
132	Unknown		42° 47.890'	-122° 18.035'	Repair Needed	Lots of dry woody debris blocking upstream side of Culvert, need excavated or burned	I
133	Unknown		42° 48.075'	-122° 17.408'	Repair Needed	One tree in drainage has potential to impede flow if washed into culvert	I
142	Drop Point	DP-22	42° 49.304'	-122° 17.886'	Repair Needed	DP 22 - Cardboard Sign And Flagging	I
148	Drop Point	DP-24	42° 48.979'	-122° 18.741'	Repair Needed		I

