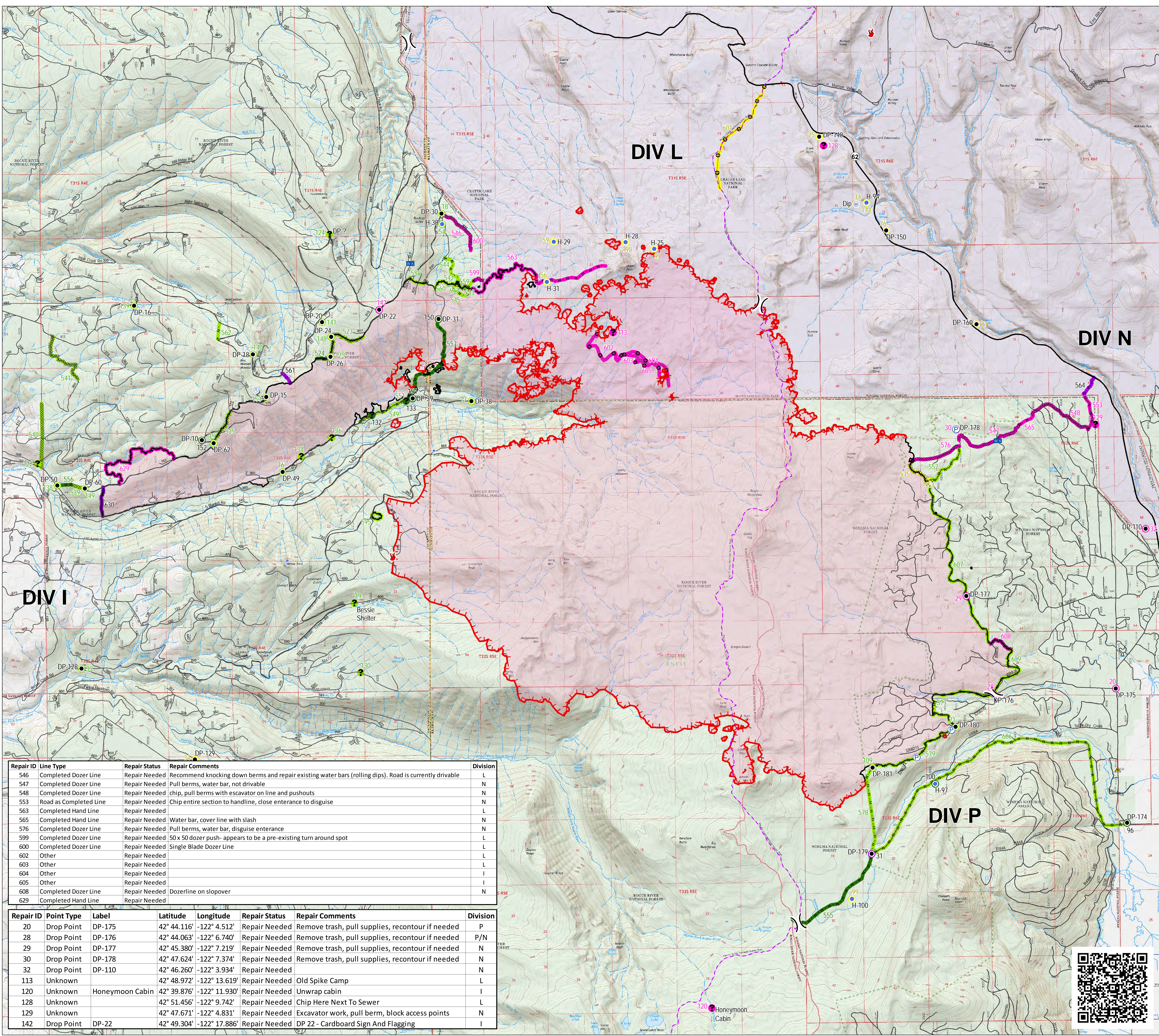




Repair Map
 Blanket Creek Fire
 High Cascades
 Complex East Zone
 33,322 Acres
 OR-FWF-000514
 September 25, 2017

- Structures
- Drop Point
- Helispot
- Lookout
- Mobile Weather Unit
- Pump
- Repeater
- Safety Zone
- Staging
- Water Source
- Miscellaneous
-) (Division Break
- Uncontrolled Fire Edge
- Completed Line
- Completed Dozer Line
- - - Completed Hand Line
- R - R - R - R Road as Completed Line
- Other
- - - PacificCrestTrail
- Wilderness
- Repair Points**
- Completed - Inspected
- Completed - Ready for Inspection
- No Repair Needed
- Repair Needed
- Not Evaluated
- Repair Lines**
- Completed - Inspected
- Completed - Ready for Inspection
- No Repair Needed
- Repair Needed
- Not Evaluated
- Land Status**
- U.S. Forest Service
- National Park Service
- Private/Unknown



Repair ID	Line Type	Repair Status	Repair Comments	Division
546	Completed Dozer Line	Repair Needed	Recommend knocking down berms and repair existing water bars (rolling dips). Road is currently drivable	L
547	Completed Dozer Line	Repair Needed	Pull berms, water bar, not drivable	N
548	Completed Dozer Line	Repair Needed	chip, pull berms with excavator on line and pushouts	N
553	Road as Completed Line	Repair Needed	Chip entire section to handline, close entrance to disguise	L
563	Completed Hand Line	Repair Needed		L
565	Completed Hand Line	Repair Needed	Water bar, cover line with slash	N
576	Completed Dozer Line	Repair Needed	Pull berms, water bar, disguise entrance	N
599	Completed Dozer Line	Repair Needed	50 x 50 dozer push- appears to be a pre-existing turn around spot	L
600	Completed Dozer Line	Repair Needed	Single Blade Dozer Line	L
602	Other	Repair Needed		L
603	Other	Repair Needed		L
604	Other	Repair Needed		I
605	Other	Repair Needed		I
608	Completed Dozer Line	Repair Needed	Dozerline on sloopover	N
629	Completed Hand Line	Repair Needed		

Repair ID	Point Type	Label	Latitude	Longitude	Repair Status	Repair Comments	Division
20	Drop Point	DP-175	42° 44.116'	-122° 4.512'	Repair Needed	Remove trash, pull supplies, recontour if needed	P
28	Drop Point	DP-176	42° 44.063'	-122° 6.740'	Repair Needed	Remove trash, pull supplies, recontour if needed	P/N
29	Drop Point	DP-177	42° 45.380'	-122° 7.219'	Repair Needed	Remove trash, pull supplies, recontour if needed	N
30	Drop Point	DP-178	42° 47.624'	-122° 7.374'	Repair Needed	Remove trash, pull supplies, recontour if needed	N
32	Drop Point	DP-110	42° 46.260'	-122° 3.934'	Repair Needed		N
113	Unknown		42° 48.972'	-122° 13.619'	Repair Needed	Old Spike Camp	L
120	Unknown	Honeymoon Cabin	42° 39.876'	-122° 11.930'	Repair Needed	Unwrap cabin	I
128	Unknown		42° 51.456'	-122° 9.742'	Repair Needed	Chip Here Next To Sewer	L
129	Unknown		42° 47.671'	-122° 4.831'	Repair Needed	Excavator work, pull berm, block access points	N
142	Drop Point	DP-22	42° 49.304'	-122° 17.886'	Repair Needed	DP 22 - Cardboard Sign And Flagging	I

