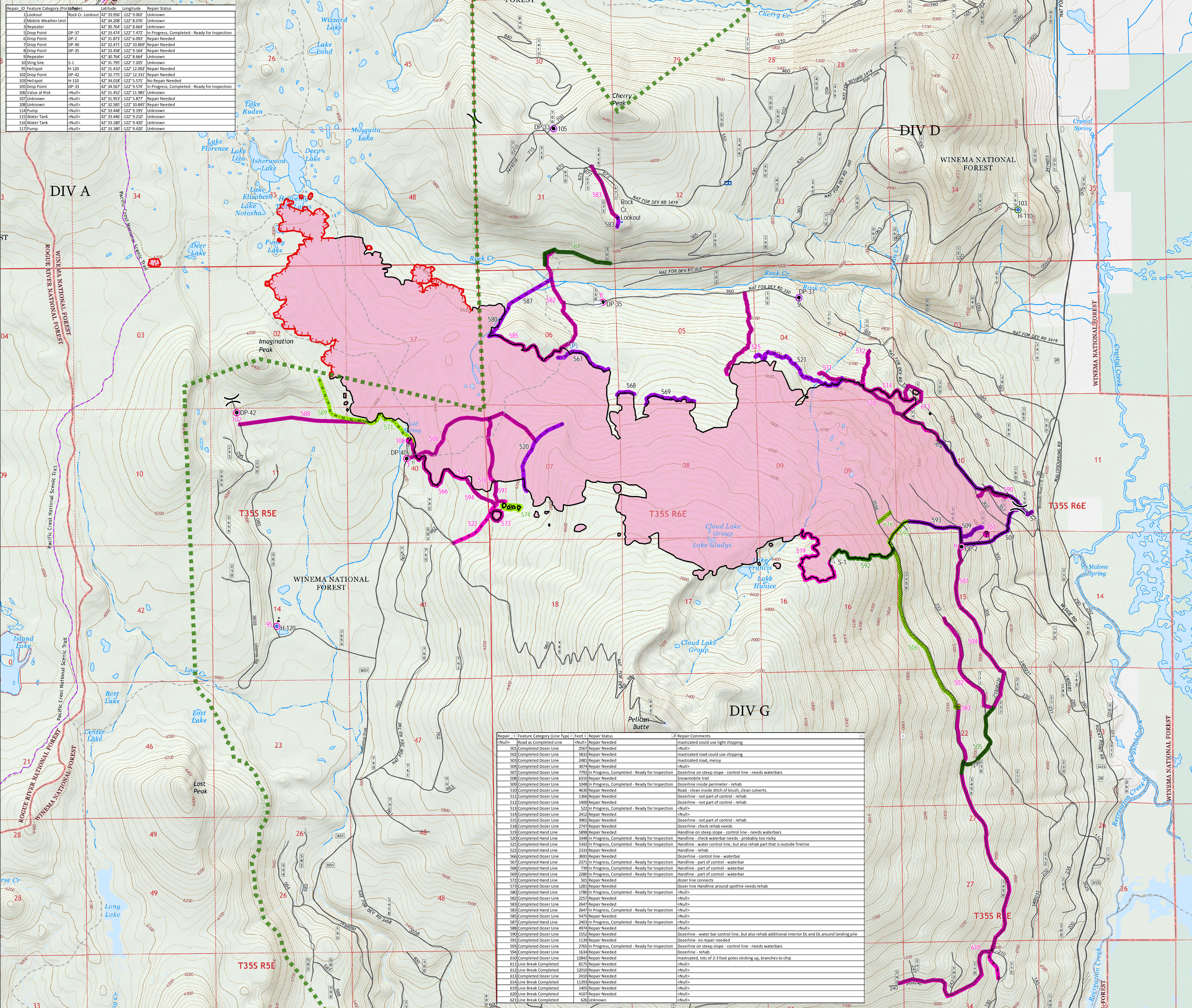




Ops/Repair Map
 North Pelican Fire
 High Cascades
 Complex East Zone
 3,589 acres
 OR-FWF-000514
 September 25, 2017

- Drop Point
- Helispot
- Ⓜ Lookout
- 🚚 Mobile Weather Unit
- Ⓟ Pump
- Ⓡ Repeater
- 🪂 Sling Site
- 🛢 Water Tank
- ⚠ Value at Risk
- ❓ Miscellaneous
-) Division Break
- 🔥 Uncontrolled Fire Edge
- Completed Line
- ⚡ Completed Dozer Line
- ⋯ Completed Hand Line
- ⋯ Road as Completed Line
- 🔴 Fire Perimeter
- ⋯ PacificCrestTrail
- Roads
- ⋯ Trails
- 🌿 Wilderness
- Repair Status
- Completed - Ready for Inspection
- No Repair Needed
- Repair Needed
- 🟢 Completed - Inspected
- 🟡 Completed - Ready for Inspection
- 🟠 No Repair Needed
- 🔴 Repair Needed
- Land Status
- 🌲 U.S. Forest Service
- 🐾 U.S. Fish and Wildlife Service
- ⚪ Private/Unknown

Repair ID	Feature Category (Point/Line)	Rock Cr.	Latitude	Longitude	Repair Status
1	Lookout	42° 33' 956"	-122° 9' 002"		Unknown
2	Mobile Weather Unit	42° 30' 264"	-122° 8' 076"		Unknown
3	Repeater	42° 30' 764"	-122° 8' 664"		Unknown
5	Drop Point	42° 33' 474"	-122° 7' 472"		In Progress, Completed - Ready for Inspection
6	Drop Point	42° 31' 874"	-122° 6' 092"		Repair Needed
7	Drop Point	42° 32' 471"	-122° 10' 869"		Repair Needed
8	Drop Point	42° 33' 458"	-122° 9' 164"		Repair Needed
9	Repeater	42° 30' 764"	-122° 8' 664"		Unknown
10	Sling Site	42° 31' 795"	-122° 7' 205"		Unknown
95	Helispot	42° 31' 410"	-122° 12' 002"		Repair Needed
102	Drop Point	42° 32' 775"	-122° 12' 331"		Repair Needed
103	Helispot	42° 34' 018"	-122° 5' 575"		No Repair Needed
105	Drop Point	42° 34' 567"	-122° 9' 574"		In Progress, Completed - Ready for Inspection
106	Value at Risk	42° 31' 452"	-122° 11' 985"		Unknown
107	Unknown	42° 31' 953"	-122° 5' 877"		Repair Needed
108	Unknown	42° 32' 585"	-122° 10' 845"		Repair Needed
114	Pump	42° 33' 448"	-122° 9' 195"		Unknown
115	Water Tank	42° 33' 446"	-122° 9' 210"		Unknown
116	Water Tank	42° 33' 180"	-122° 9' 420"		Unknown
117	Pump	42° 33' 180"	-122° 9' 420"		Unknown



Repair ID	Feature Category (Line Type)	Feet	Repair Status	Repair Comments
501	Road as Completed Line	<Null>	Repair Needed	masticated could use light chipping
502	Completed Dozer Line	2567	Repair Needed	<Null>
503	Completed Dozer Line	5832	Repair Needed	masticated road could use chipping
504	Completed Dozer Line	2481	Repair Needed	masticated road, messy
505	Completed Dozer Line	3074	Repair Needed	<Null>
507	Completed Dozer Line	7792	In Progress, Completed - Ready for Inspection	Dozerline on steep slope - control line - needs waterbars
508	Completed Dozer Line	6310	Repair Needed	Snowmobile trail
509	Completed Dozer Line	10484	In Progress, Completed - Ready for Inspection	Dozerline inside perimeter - rehab
510	Completed Dozer Line	4630	Repair Needed	Road - clean inside ditch of brush, clean culverts.
511	Completed Dozer Line	1366	Repair Needed	Dozerline - not part of control - rehab
512	Completed Dozer Line	1400	Repair Needed	Dozerline - not part of control - rehab
513	Completed Dozer Line	522	In Progress, Completed - Ready for Inspection	<Null>
514	Completed Dozer Line	2412	Repair Needed	<Null>
515	Completed Dozer Line	3965	Repair Needed	Dozerline - not part of control - rehab
518	Completed Dozer Line	2747	Repair Needed	Dozerline - check rehab needs
519	Completed Hand Line	5898	Repair Needed	Handline on steep slope - control line - needs waterbars
520	Completed Hand Line	3348	In Progress, Completed - Ready for Inspection	Handline - check waterbar needs - probably too rocky
521	Completed Hand Line	5342	In Progress, Completed - Ready for Inspection	Handline - water control line, but also rehab part that is outside fireline
522	Completed Hand Line	2333	Repair Needed	Handline - rehab
566	Completed Dozer Line	3691	Repair Needed	Dozerline - control line - waterbar
567	Completed Hand Line	2371	In Progress, Completed - Ready for Inspection	Handline - part of control - waterbar
568	Completed Hand Line	7791	In Progress, Completed - Ready for Inspection	Handline - part of control - waterbar
569	Completed Hand Line	2280	In Progress, Completed - Ready for Inspection	Handline - part of control - waterbar
572	Completed Hand Line	501	Repair Needed	dozer line connects
573	Completed Dozer Line	1281	Repair Needed	Dozer line Handline around spotfire needs rehab
580	Completed Hand Line	1701	In Progress, Completed - Ready for Inspection	<Null>
582	Completed Dozer Line	2257	Repair Needed	<Null>
583	Completed Dozer Line	2647	Repair Needed	<Null>
583	Completed Hand Line	2647	In Progress, Completed - Ready for Inspection	<Null>
585	Completed Dozer Line	5475	Repair Needed	<Null>
587	Completed Hand Line	2403	In Progress, Completed - Ready for Inspection	<Null>
588	Completed Dozer Line	4974	Repair Needed	<Null>
590	Completed Dozer Line	1552	Repair Needed	Dozerline - water bar control line, but also rehab additional interior DL and DL around landing pile
593	Completed Dozer Line	1139	Repair Needed	Dozerline - no repair needed
593	Completed Dozer Line	2765	In Progress, Completed - Ready for Inspection	Dozerline on steep slope - control line - needs waterbars
594	Completed Dozer Line	1634	Repair Needed	Dozerline - rehab
610	Completed Dozer Line	12842	Repair Needed	masticated, lots of 2-3 foot poles sticking up, branches to chip
611	Line Break Completed	8175	Repair Needed	<Null>
612	Line Break Completed	12010	Repair Needed	<Null>
613	Completed Dozer Line	2410	Repair Needed	<Null>
614	Line Break Completed	11393	Repair Needed	<Null>
619	Line Break Completed	1405	Repair Needed	<Null>
620	Line Break Completed	4107	Repair Needed	<Null>
621	Line Break Completed	626	Unknown	<Null>

