



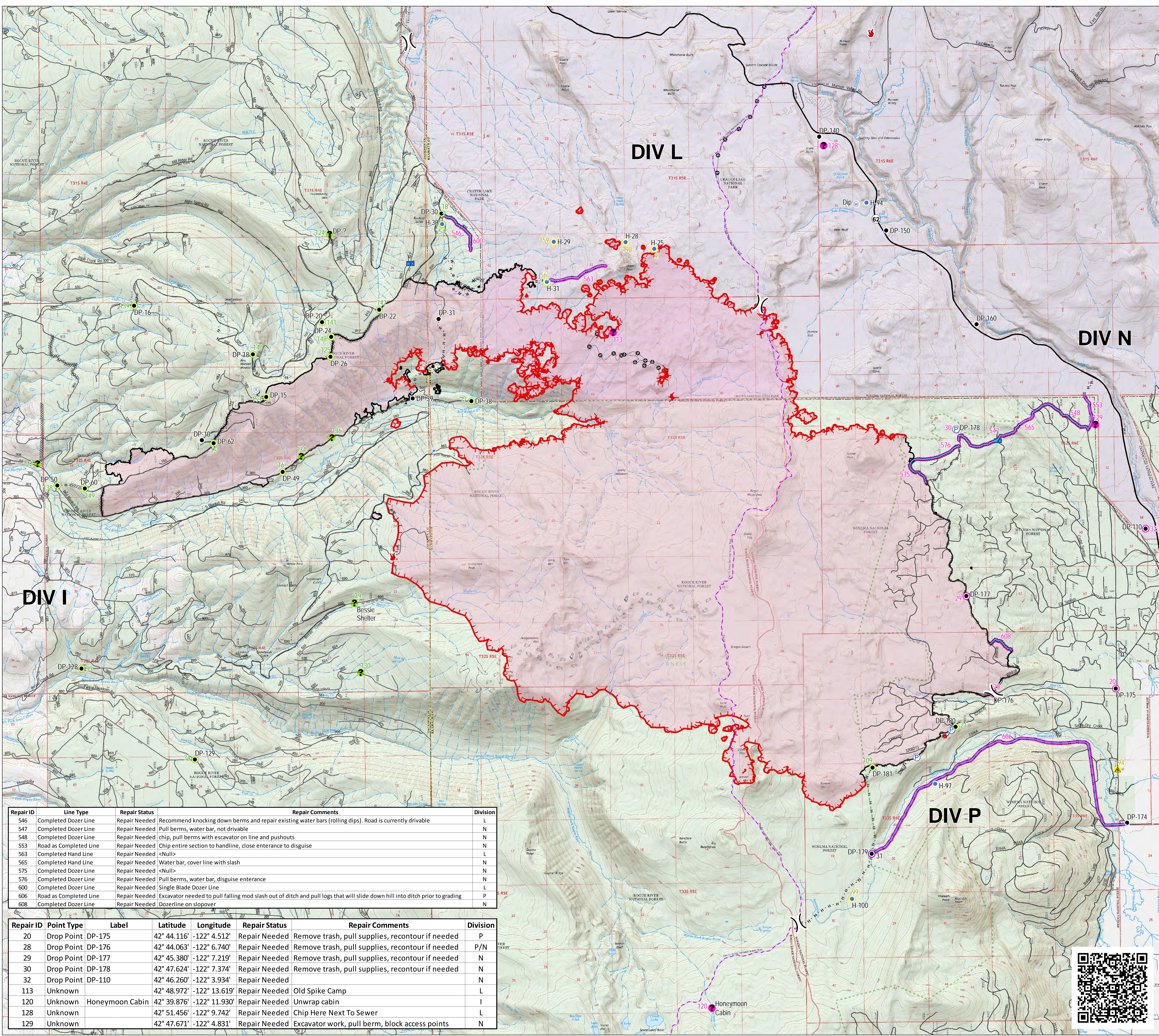
Repair Map
Blanket Creek Fire
High Cascades
Complex East Zone
33,322 Acres
OR-FWF-000514
September 26, 2017

- Structures
- Drop Point
- Helispot
- ⌚ Lookout
- ☁ Mobile Weather Unit
- Ⓟ Pump
- Ⓡ Repeater
- ▲ Safety Zone
- Ⓢ Staging
- Ⓜ Water Source
- Ⓡ Miscellaneous
-) (Division Break
- Uncontrolled Fire Edge
- Completed Line
- ⊘ Completed Dozer Line
- ⋯ Completed Hand Line
- ⋯ Road as Completed Line
- ⊙ Other
- ⋯ PacificCrestTrail
- ⊘ Wilderness

- Repair Points**
- Completed - Inspected
 - Completed - Ready for Inspection
 - Repair Needed
 - Not Evaluated

- Repair Lines**
- Repair Needed

- Land Status**
- ⊕ U.S. Forest Service
 - ⊕ National Park Service
 - ⊕ Private/Unknown



Repair ID	Line Type	Repair Status	Repair Comments	Division
546	Completed Dozer Line	Repair Needed	Recommend knocking down berms and repair existing water bars (rolling dips). Road is currently drivable	L
547	Completed Dozer Line	Repair Needed	Pull berms, water bar, not drivable	N
548	Completed Dozer Line	Repair Needed	chip, pull berms with excavator on line and pushouts	N
553	Road as Completed Line	Repair Needed	Chip entire section to handline, close entrance to disguise	N
563	Completed Hand Line	Repair Needed	<Null>	L
565	Completed Hand Line	Repair Needed	Water bar, cover line with slash	N
575	Completed Dozer Line	Repair Needed	<Null>	N
576	Completed Dozer Line	Repair Needed	Pull berms, water bar, disguise entrance	N
600	Completed Dozer Line	Repair Needed	Single Blade Dozer Line	L
606	Road as Completed Line	Repair Needed	Excavator needed to pull falling mod slash out of ditch and pull logs that will slide down hill into ditch prior to grading	P
608	Completed Dozer Line	Repair Needed	Dozerline on slopover	N

Repair ID	Point Type	Label	Latitude	Longitude	Repair Status	Repair Comments	Division
20	Drop Point	DP-175	42° 44.116'	-122° 4.512'	Repair Needed	Remove trash, pull supplies, recontour if needed	P
28	Drop Point	DP-176	42° 44.063'	-122° 6.740'	Repair Needed	Remove trash, pull supplies, recontour if needed	P/N
29	Drop Point	DP-177	42° 45.380'	-122° 7.219'	Repair Needed	Remove trash, pull supplies, recontour if needed	N
30	Drop Point	DP-178	42° 47.624'	-122° 7.374'	Repair Needed	Remove trash, pull supplies, recontour if needed	N
32	Drop Point	DP-110	42° 46.260'	-122° 3.934'	Repair Needed		N
113	Unknown		42° 48.972'	-122° 13.619'	Repair Needed	Old Spike Camp	L
120	Unknown	Honeymoon Cabin	42° 39.876'	-122° 11.930'	Repair Needed	Unwrap cabin	I
128	Unknown		42° 51.456'	-122° 9.742'	Repair Needed	Chip Here Next To Sewer	L
129	Unknown		42° 47.671'	-122° 4.831'	Repair Needed	Excavator work, pull berm, block access points	N

