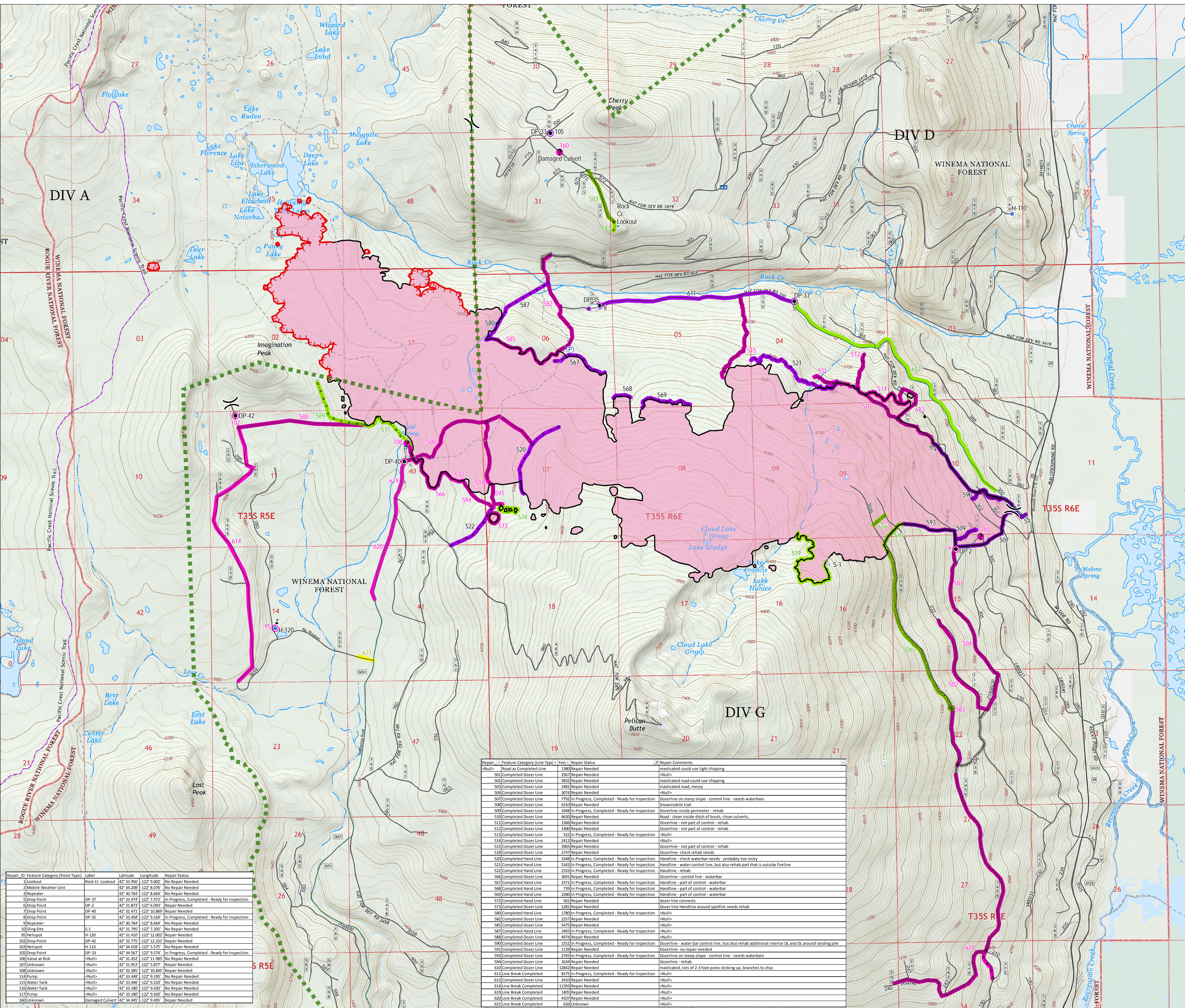




Ops/Repair Map
 North Pelican Fire
 High Cascades
 Complex East Zone
 3,589 acres
 OR-FWF-000514

September 26, 2017

- Drop Point
- Helispot
- ⌘ Lookout
- ☁ Mobile Weather Unit
- Ⓟ Pump
- Ⓜ Repeater
- ⚙ Sling Site
- ⊠ Water Tank
- ⚠ Value at Risk
- Ⓡ Miscellaneous
-) Division Break
- Uncontrolled Fire Edge
- Completed Line
- Completed Dozer Line
- Completed Hand Line
- Road as Completed Line
- Fire Perimeter
- PacificCrestTrail
- Roads
- Trails
- Wilderness
- Repair Point
- Completed - Ready for Inspection
- Repair Needed
- Completed - Inspected
- Completed - Ready for Inspection
- Repair Needed
- Not Evaluated
- Land Status
- U.S. Forest Service
- U.S. Fish and Wildlife Service
- Private/Unknown



Repair ID	Feature Category (Point Type)	Label	Latitude	Longitude	Repair Status
1	Lookout	Rock Cr. Lookout	42° 33.956'	-122° 9.002'	No Repair Needed
2	Mobile Weather Unit		42° 34.208'	-122° 8.076'	No Repair Needed
3	Repeater		42° 30.764'	-122° 8.664'	No Repair Needed
5	Drop Point	DP-37	42° 33.474'	-122° 7.472'	In Progress, Completed - Ready for Inspection
6	Drop Point	DP-2	42° 31.873'	-122° 6.093'	Repair Needed
7	Drop Point	DP-40	42° 32.471'	-122° 10.869'	Repair Needed
8	Drop Point	DP-35	42° 33.458'	-122° 9.164'	In Progress, Completed - Ready for Inspection
9	Repeater		42° 30.784'	-122° 8.664'	No Repair Needed
10	Sling Site	S-1	42° 31.795'	-122° 7.205'	No Repair Needed
95	Helispot	H-120	42° 31.410'	-122° 12.002'	Repair Needed
102	Drop Point	DP-42	42° 32.775'	-122° 12.331'	Repair Needed
103	Helispot	H-110	42° 30.018'	-122° 5.575'	No Repair Needed
105	Drop Point	DP-33	42° 34.567'	-122° 9.574'	In Progress, Completed - Ready for Inspection
106	Value at Risk	<Null>	42° 31.452'	-122° 11.985'	No Repair Needed
107	Unknown	<Null>	42° 31.953'	-122° 5.877'	Repair Needed
108	Unknown	<Null>	42° 32.585'	-122° 10.845'	Repair Needed
114	Pump	<Null>	42° 33.448'	-122° 9.190'	No Repair Needed
115	Water Tank	<Null>	42° 33.446'	-122° 9.210'	No Repair Needed
116	Water Tank	<Null>	42° 33.180'	-122° 9.420'	No Repair Needed
117	Pump	<Null>	42° 33.180'	-122° 9.420'	No Repair Needed
166	Unknown	Damaged Culvert	42° 34.493'	-122° 9.499'	Repair Needed

Repair ID	Feature Category (Line Type)	Label	Repair Status	Repair Comments
<Null>	Road as Completed Line	1380	Repair Needed	Imagined could use light chipping
501	Completed Dozer Line	2567	Repair Needed	<Null>
502	Completed Dozer Line	5832	Repair Needed	masticated road could use chipping
503	Completed Dozer Line	2483	Repair Needed	masticated road, messy
504	Completed Dozer Line	3274	Repair Needed	<Null>
507	Completed Dozer Line	7792	In Progress, Completed - Ready for Inspection	Dozerline on steep slope - control line - needs waterbars
508	Completed Dozer Line	6310	Repair Needed	Snowmobile trail
509	Completed Dozer Line	1048	In Progress, Completed - Ready for Inspection	Dozerline inside perimeter - rehab
510	Completed Dozer Line	4630	Repair Needed	Road - clean inside ditch of brush, clean culverts.
511	Completed Dozer Line	1366	Repair Needed	Dozerline - not part of control - rehab
512	Completed Dozer Line	1400	Repair Needed	Dozerline - not part of control - rehab
513	Completed Dozer Line	522	In Progress, Completed - Ready for Inspection	<Null>
514	Completed Dozer Line	2432	Repair Needed	<Null>
515	Completed Dozer Line	3265	Repair Needed	Dozerline - not part of control - rehab
518	Completed Dozer Line	2747	Repair Needed	Dozerline - check rehab needs
520	Completed Hand Line	3348	In Progress, Completed - Ready for Inspection	Handline - check waterbar needs - probably too rocky
521	Completed Hand Line	5342	In Progress, Completed - Ready for Inspection	Handline - water control line, but also rehab part that is outside fireline
522	Completed Hand Line	2333	In Progress, Completed - Ready for Inspection	Handline - rehab
566	Completed Hand Line	3691	Repair Needed	Dozerline - control line - waterbar
567	Completed Hand Line	2371	In Progress, Completed - Ready for Inspection	Handline - part of control - waterbar
568	Completed Hand Line	7391	In Progress, Completed - Ready for Inspection	Handline - part of control - waterbar
569	Completed Hand Line	2280	In Progress, Completed - Ready for Inspection	Handline - part of control - waterbar
573	Completed Hand Line	5201	Repair Needed	Dozerline connects
573	Completed Dozer Line	1281	Repair Needed	Dozerline Handline around spotfire needs rehab
580	Completed Hand Line	1780	In Progress, Completed - Ready for Inspection	<Null>
582	Completed Dozer Line	2257	Repair Needed	<Null>
585	Completed Dozer Line	5475	Repair Needed	<Null>
587	Completed Hand Line	2263	In Progress, Completed - Ready for Inspection	<Null>
588	Completed Dozer Line	4974	Repair Needed	<Null>
590	Completed Dozer Line	1552	In Progress, Completed - Ready for Inspection	Dozerline - water bar control line, but also rehab additional interior DL and DL around landing pile
591	Completed Dozer Line	1139	Repair Needed	Dozerline - no repair needed
593	Completed Dozer Line	2765	In Progress, Completed - Ready for Inspection	Dozerline on steep slope - control line - needs waterbars
594	Completed Dozer Line	1534	Repair Needed	Dozerline - rehab
610	Completed Dozer Line	12842	Repair Needed	masticated, lots of 2-3 foot poles sticking up, branches to chip
611	Line Break Completed	8175	In Progress, Completed - Ready for Inspection	<Null>
613	Completed Dozer Line	2410	Repair Needed	<Null>
614	Line Break Completed	13393	Repair Needed	<Null>
619	Line Break Completed	1265	Repair Needed	<Null>
620	Line Break Completed	4107	Repair Needed	<Null>
621	Line Break Completed	626	Unknown	<Null>

0 1/4 1/2 1 Miles

NAD 1983 UTM zone 10N