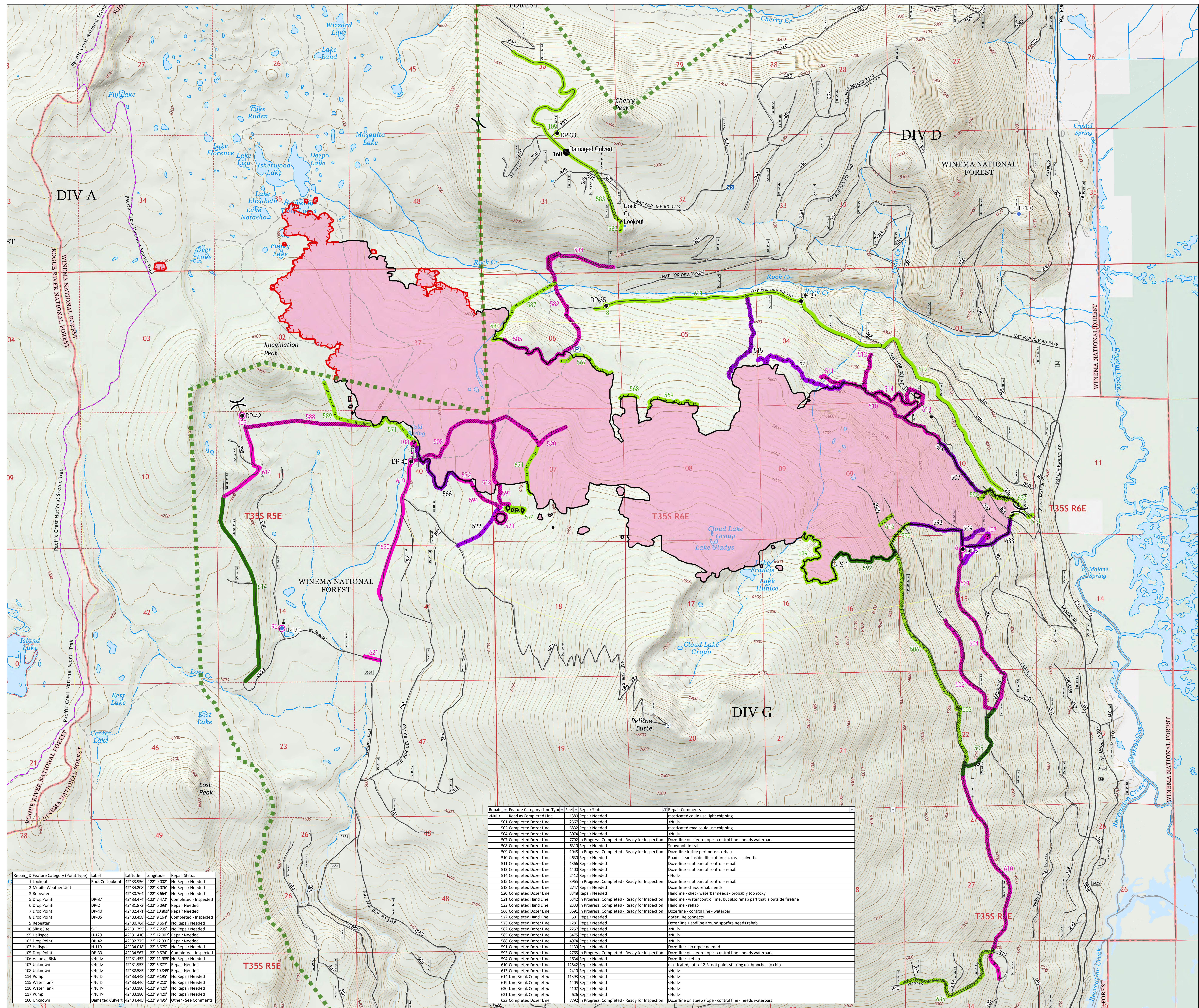




TEAM 4
 Ops/Repair Map
 North Pelican Fire
 High Cascades
 Complex East Zone
 3,589 acres
 OR-FWF-000514

September 27, 2017

- Drop Point
- Helispot
- ⌚ Lookout
- ☁ Mobile Weather Unit
- Ⓟ Pump
- Ⓜ Repeater
- ⚖ Sling Site
- Ⓜ Water Tank
- ⚡ Value at Risk
- Ⓡ Miscellaneous
-) (Division Break
- Uncontrolled Fire Edge
- Completed Line
- Completed Dozer Line
- Completed Hand Line
- Road as Completed Line
- Fire Perimeter
- PacificCrestTrail
- Roads
- Trails
- Wilderness
- Repair Point
- Completed - Inspected
- Other - See Comments
- Repair Needed
- Completed - Inspected
- Completed - Ready for Inspection
- No Repair Needed
- Not Applicable
- Repair Needed
- Land Status
- U.S. Forest Service
- U.S. Fish and Wildlife Service
- Private/Unknown



Repair ID	Feature Category (Point Type)	Label	Latitude	Longitude	Repair Status
1	Lookout	Rock Cr. Lookout	42° 33.956'	-122° 9.002'	No Repair Needed
2	Mobile Weather Unit		42° 34.208'	-122° 8.076'	No Repair Needed
3	Repeater		42° 30.704'	-122° 8.664'	No Repair Needed
4	Drop Point	DP-37	42° 33.474'	-122° 7.472'	Completed - Inspected
5	Drop Point	DP-2	42° 31.873'	-122° 6.093'	Repair Needed
6	Drop Point	DP-40	42° 32.471'	-122° 10.869'	Repair Needed
7	Drop Point	DP-35	42° 33.458'	-122° 9.164'	Completed - Inspected
8	Drop Point		42° 30.784'	-122° 8.664'	No Repair Needed
9	Repeater		42° 31.795'	-122° 7.205'	No Repair Needed
10	Sling Site	S-1	42° 31.410'	-122° 12.002'	Repair Needed
95	Helispot	H-120	42° 32.775'	-122° 12.331'	Repair Needed
102	Drop Point	DP-42	42° 34.018'	-122° 5.575'	No Repair Needed
103	Helispot	H-110	42° 34.567'	-122° 9.574'	Completed - Inspected
105	Drop Point	DP-33	42° 31.452'	-122° 11.985'	No Repair Needed
106	Value at Risk	<Null>	42° 31.953'	-122° 5.877'	Repair Needed
107	Unknown	<Null>	42° 32.585'	-122° 10.885'	Repair Needed
108	Unknown	<Null>	42° 33.446'	-122° 9.192'	No Repair Needed
114	Pump	<Null>	42° 33.446'	-122° 9.210'	No Repair Needed
115	Water Tank	<Null>	42° 33.180'	-122° 9.420'	No Repair Needed
116	Water Tank	<Null>	42° 33.180'	-122° 9.420'	No Repair Needed
117	Pump	<Null>	42° 34.442'	-122° 9.495'	Other - See Comments
126	Unknown	Damaged Culvert			Other - See Comments

Repair ID	Feature Category (Line Type)	Feet	Repair Status	Repair Comments
<Null>	Road as Completed Line	1380	Repair Needed	Masticated could use light chipping
501	Completed Dozer Line	2567	Repair Needed	<Null>
502	Completed Dozer Line	5832	Repair Needed	Masticated road could use chipping
504	Completed Dozer Line	3074	Repair Needed	<Null>
507	Completed Dozer Line	7792	In Progress, Completed - Ready for Inspection	Dozerline on steep slope - control line - needs waterbars
508	Completed Dozer Line	6310	Repair Needed	Dozerline - not part of control - rehab
509	Completed Dozer Line	10488	In Progress, Completed - Ready for Inspection	Dozerline inside perimeter - rehab
510	Completed Dozer Line	4630	Repair Needed	Road - clean inside ditch of brush, clean culverts.
511	Completed Dozer Line	1366	Repair Needed	Dozerline - not part of control - rehab
512	Completed Dozer Line	1800	Repair Needed	Dozerline - not part of control - rehab
514	Completed Dozer Line	2412	Repair Needed	<Null>
515	Completed Dozer Line	3965	In Progress, Completed - Ready for Inspection	Dozerline - not part of control - rehab
518	Completed Dozer Line	2747	Repair Needed	Dozerline - check rehab needs
520	Completed Dozer Line	3348	In Progress, Completed - Ready for Inspection	Handline - check waterbar needs - probably too rocky
521	Completed Hand Line	1342	In Progress, Completed - Ready for Inspection	Handline - water control line, but also rehab part that is outside fireline
522	Completed Hand Line	2333	In Progress, Completed - Ready for Inspection	Handline - rehab
526	Completed Dozer Line	3691	In Progress, Completed - Ready for Inspection	Dozerline - control line - waterbar
572	Completed Hand Line	501	Repair Needed	dozer line connects
573	Completed Dozer Line	1283	Repair Needed	Dozer line Handline around spotfire needs rehab
582	Completed Dozer Line	2257	Repair Needed	<Null>
585	Completed Dozer Line	5475	Repair Needed	<Null>
588	Completed Dozer Line	4974	Repair Needed	<Null>
591	Completed Dozer Line	1139	Repair Needed	Dozerline - no repair needed
593	Completed Dozer Line	2763	In Progress, Completed - Ready for Inspection	Dozerline on steep slope - control line - needs waterbars
594	Completed Dozer Line	1634	Repair Needed	Dozerline - rehab
610	Completed Dozer Line	12842	Repair Needed	masticated, lots of 2-3 foot poles sticking up, branches to chip
613	Completed Dozer Line	2410	Repair Needed	<Null>
614	Line Break Completed	11393	Repair Needed	<Null>
619	Line Break Completed	1405	Repair Needed	<Null>
620	Line Break Completed	4107	Repair Needed	<Null>
621	Line Break Completed	626	Repair Needed	<Null>
633	Completed Dozer Line	7792	In Progress, Completed - Ready for Inspection	Dozerline on steep slope - control line - needs waterbars

0 1/4 1/2 1 Miles

NAD 1983 UTM zone 10N