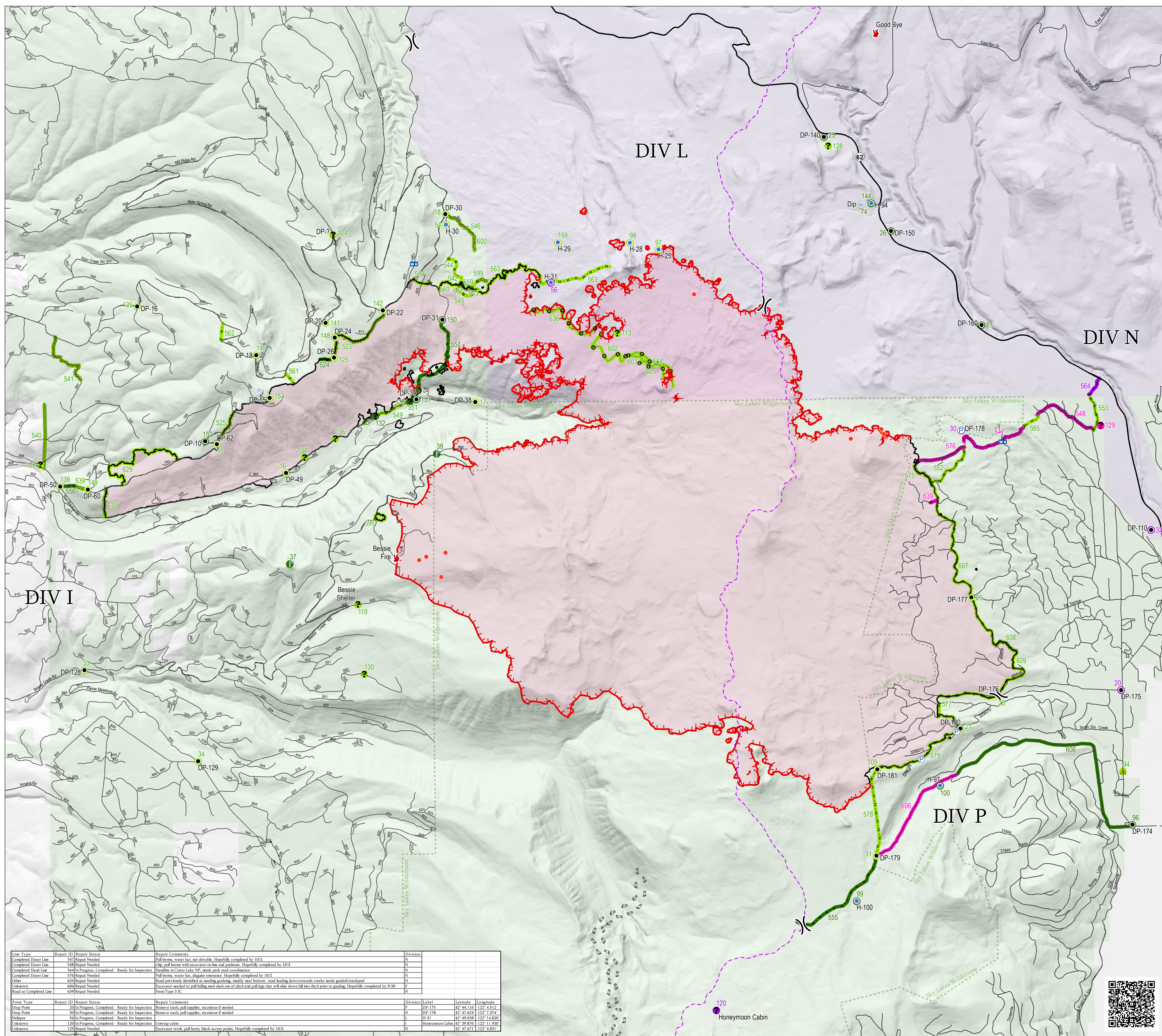




Repair Map  
 Blanket Creek Fire  
 High Cascades  
 Complex East Zone  
 33,322 Acres  
 OR-FWF-000514  
 September 30, 2017

- Structures
- Drop Point
- 🔥 Fire Location
- Helispot
- Hot Spot
- 🏠 Lookout
- 🚚 Mobile Weather Unit
- Ⓟ Pump
- 📡 Repeater
- ⚠️ Safety Zone
- 📍 Staging Area
- 🌊 Water Source
- ❓ Unknown
- ) Division Break
- 🔴 Uncontrolled Fire Edge
- Completed Line
- ⊘ Completed Dozer Line
- ⋯ Completed Hand Line
- ⋯ Road as Completed Line
- Other
- ⋯ PacificCrestTrail
- ⊘ Wilderness
- Repair Points**
- Completed - Inspected
- Completed - Ready for Inspection
- No Repair Needed
- Repair Needed
- Repair Lines**
- Completed - Inspected
- Completed - Ready for Inspection
- No Repair Needed
- Repair Needed
- Land Status**
- 🌲 U.S. Forest Service
- 🏔️ National Park Service
- 🏠 Private/Unknown



Line Type	Repair ID	Repair Status	Repair Comments	Division
Completed Dozer Line	540	Repair Needed	Pull berms, water bar, see drivable. Hopefully completed by 10/3.	N
Completed Dozer Line	548	Repair Needed	Chip, pull berms with excavator on line and pushouts. Hopefully completed by 10/3.	N
Completed Hand Line	564	In Progress, Completed - Ready for Inspection	Handline in Crater Lake NP, needs park read coordination.	N
Completed Dozer Line	575	Repair Needed	Pull berms, water bar, diagenic entrance. Hopefully completed by 10/2.	N
Other	634	Repair Needed	Road previously identified as needing grading, ready near bottom, road leading down towards creek needs graded/outside.	N
Unknown	606	Repair Needed	Excavator needed to pull falling mud slash out of ditch and pull logs that will slide down hill into ditch prior to grading. Hopefully completed by 9/30.	P
Road as Completed Line	639	Repair Needed	From Type 3 IC	N

Point Type	Repair ID	Repair Status	Repair Comments	Division	Label	Latitude	Longitude
Drop Point	20	In Progress, Completed - Ready for Inspection	Remove trash, pull supplies, reconator if needed.	P	DP-175	42° 44.116'	122° 4.512'
Drop Point	30	In Progress, Completed - Ready for Inspection	Remove trash, pull supplies, reconator if needed.	N	DP-178	42° 47.624'	122° 7.374'
Helispot	56	In Progress, Completed - Ready for Inspection		L	H-31	42° 49.658'	122° 14.820'
Unknown	120	In Progress, Completed - Ready for Inspection	Unwrap cabin	I	Honeymoon Cabin	42° 39.876'	122° 11.930'
Unknown	129	Repair Needed	Excavator work, pull berm, block access points. Hopefully completed by 10/3.	N		42° 47.671'	122° 4.831'

