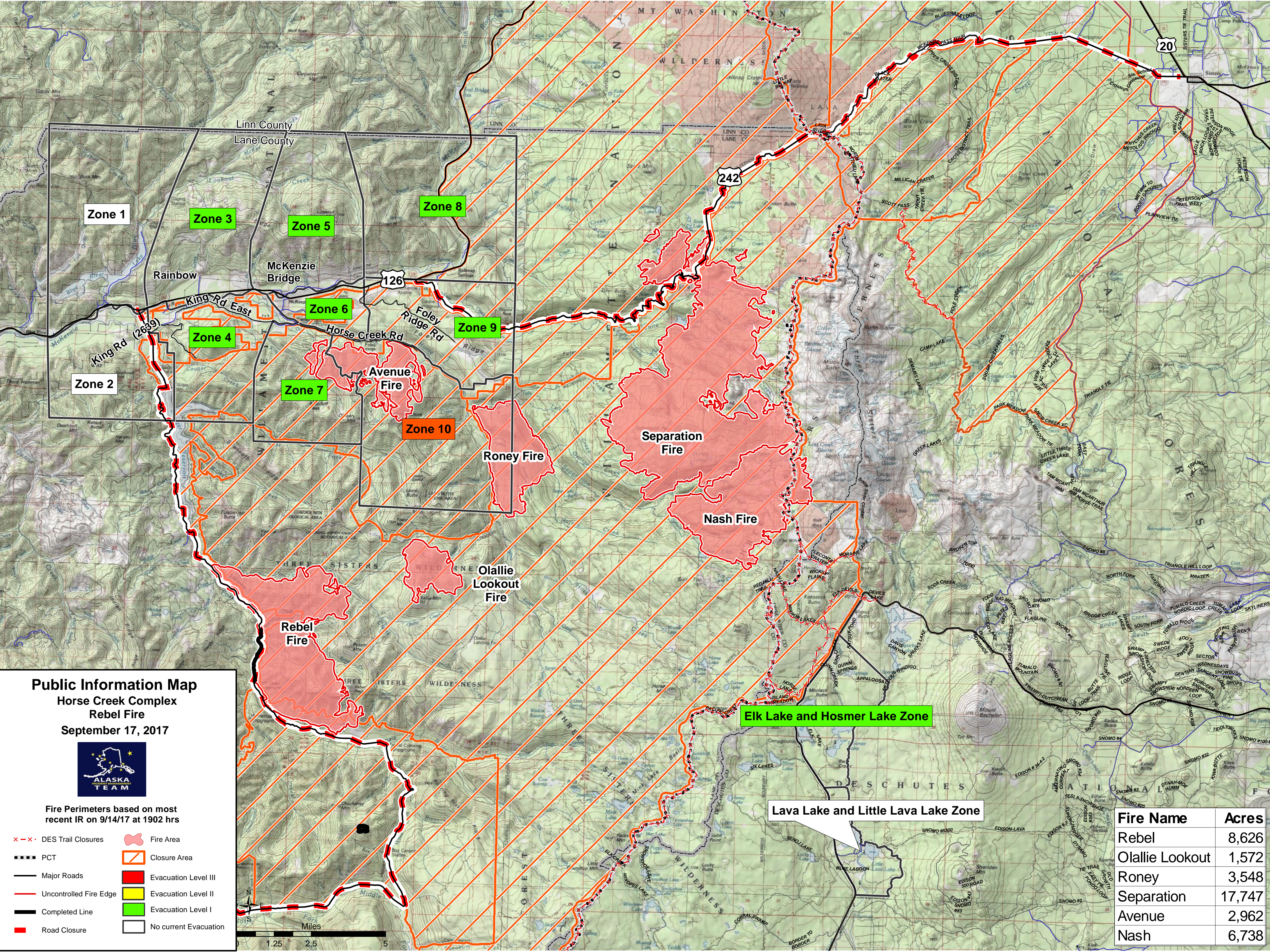
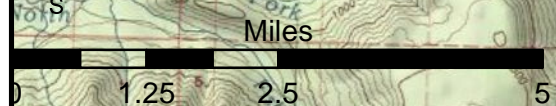


**Public Information Map**  
**Horse Creek Complex**  
**Rebel Fire**  
**September 17, 2017**



Fire Perimeters based on most recent IR on 9/14/17 at 1902 hrs

- - - x DES Trail Closures
- PCT
- Major Roads
- Uncontrolled Fire Edge
- Completed Line
- Road Closure
- Fire Area
- Closure Area
- Evacuation Level III
- Evacuation Level II
- Evacuation Level I
- No current Evacuation



Fire Name	Acres
Rebel	8,626
Olallie Lookout	1,572
Roney	3,548
Separation	17,747
Avenue	2,962
Nash	6,738