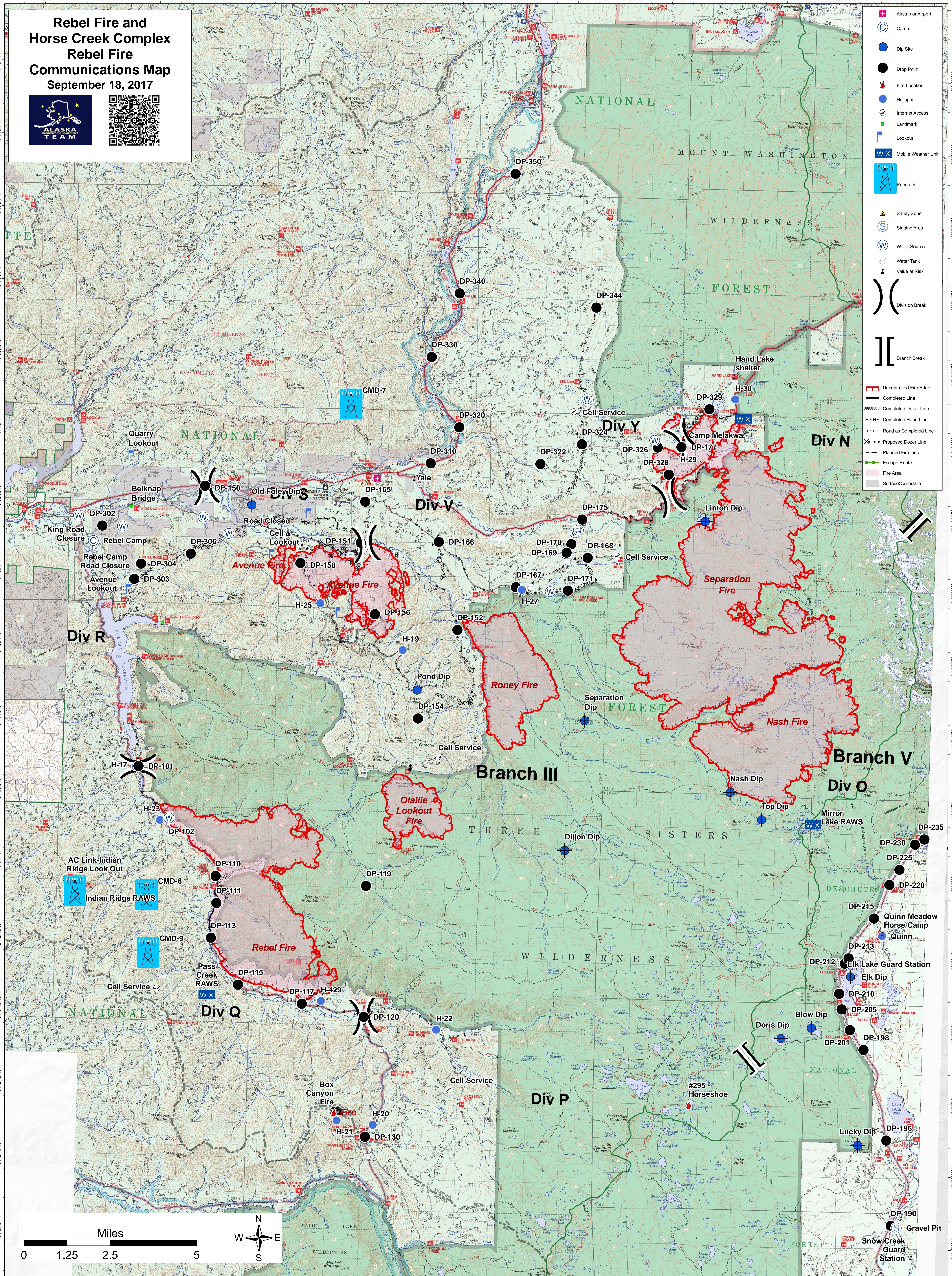


Rebel Fire and Horse Creek Complex Rebel Fire Communications Map

September 18, 2017



- Airstrip or Airport
- Camp
- Dip Site
- Drop Point
- Fire Location
- Helispot
- Internet Access
- Landmark
- Lookout
- Mobile Weather Unit
- Repeater
- Safety Zone
- Staging Area
- Water Source
- Water Tank
- Value at Risk
- Division Break
- Branch Break



- Uncontrolled Fire Edge
- Completed Line
- Completed Dozer Line
- Completed Hand Line
- Proposed Dozer Line
- Planned Fire Line
- Escape Route
- Fire Area
- Surface Ownership



122°16'50"W 122°15'0"W 122°13'10"W 122°11'20"W 122°9'30"W 122°7'40"W 122°5'50"W 122°4'0"W 122°2'10"W 122°0'20"W 121°58'30"W 121°56'40"W 121°54'50"W 121°53'0"W 121°51'10"W 121°49'20"W 121°47'30"W 121°45'40"W