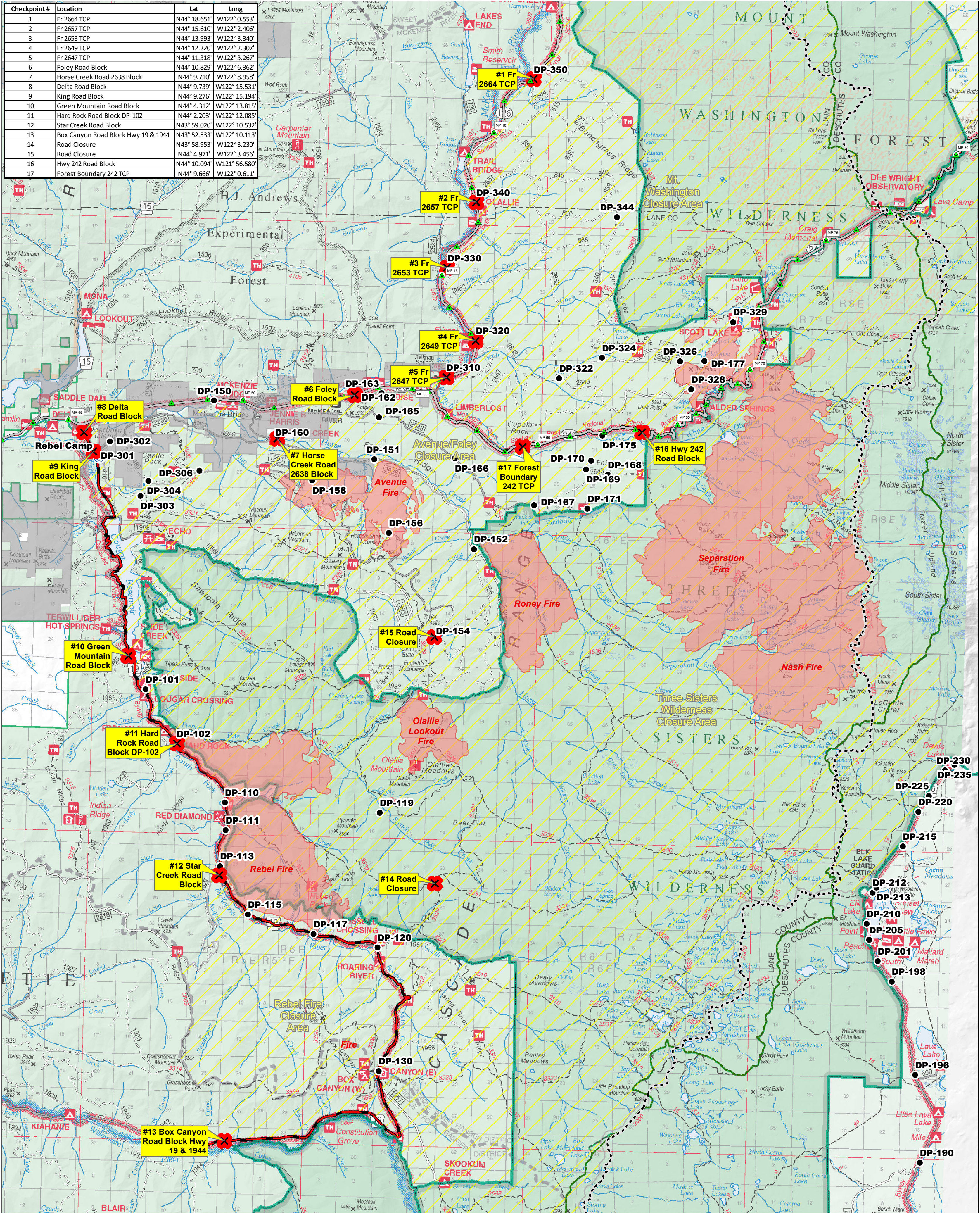


Checkpoint #	Location	Lat	Long
1	Fr 2664 TCP	N44° 18.651'	W122° 0.553'
2	Fr 2657 TCP	N44° 15.610'	W122° 2.406'
3	Fr 2653 TCP	N44° 13.993'	W122° 3.340'
4	Fr 2649 TCP	N44° 12.220'	W122° 3.207'
5	Fr 2647 TCP	N44° 11.318'	W122° 3.267'
6	Foley Road Block	N44° 10.829'	W122° 6.362'
7	Horse Creek Road 2638 Block	N44° 9.710'	W122° 8.958'
8	Delta Road Block	N44° 9.739'	W122° 15.531'
9	King Road Block	N44° 9.276'	W122° 15.194'
10	Green Mountain Road Block	N44° 4.312'	W122° 13.815'
11	Hard Rock Road Block DP-102	N44° 2.203'	W122° 12.085'
12	Star Creek Road Block	N43° 59.020'	W122° 10.532'
13	Box Canyon Road Block Hwy 19 & 1944	N43° 52.533'	W122° 10.113'
14	Road Closure	N43° 58.953'	W122° 3.230'
15	Road Closure	N44° 4.971'	W122° 3.456'
16	Hwy 242 Road Block	N44° 10.094'	W121° 56.580'
17	Forest Boundary 242 TCP	N44° 9.666'	W122° 0.611'



**Security Closure Map**  
**Horse Creek Complex**  
**Rebel Fire**  
**OR-WIF-170234**  
**September 23, 2017**



- ▲ Mileposts
- ✕ Road Closure
- Drop Point
- ⊙ Camp
- ⋯ PCT
- 🔥 Fire Area
- ▭ Forest Boundary
- ▭ Wilderness Area
- ▭ Non-Forest Service
- ▭ Closure Areas
- ▭ Road Closure

