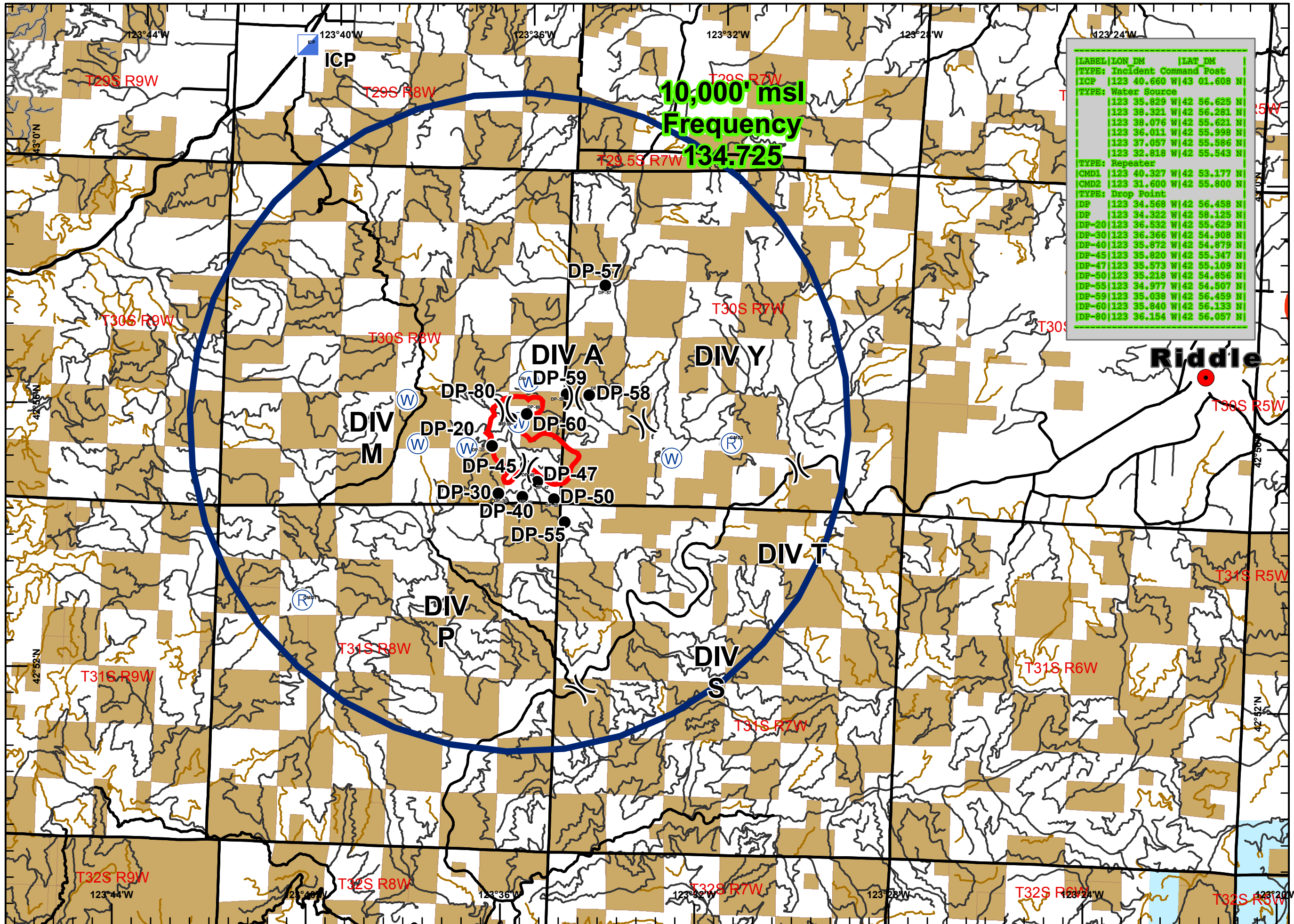
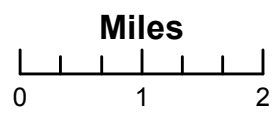


**HORSE PRAIRIE**  
**OR733S-11418**  
 Aug 30, 2017  
 Day Shift  
 Approx 4410 ac  
**TFR MAP**



[LABEL]	[LON DM]	[LAT DM]
[TYPE: Incident Command Post]		
[ICP]	123 40.660 W	43 01.608 N
[TYPE: Water Source]		
	123 35.829 W	42 56.625 N
	123 38.321 W	42 56.281 N
	123 38.076 W	42 55.621 N
	123 36.011 W	42 55.998 N
	123 37.057 W	42 55.586 N
	123 32.818 W	42 55.543 N
[TYPE: Repeater]		
[CMD1]	123 40.327 W	42 53.177 N
[CMD2]	123 31.600 W	42 55.800 N
[TYPE: Drop Point]		
[DP]	123 34.568 W	42 56.458 N
[DP]	123 34.322 W	42 58.125 N
[DP-20]	123 36.532 W	42 55.629 N
[DP-30]	123 36.366 W	42 54.908 N
[DP-40]	123 35.872 W	42 54.879 N
[DP-45]	123 35.820 W	42 55.347 N
[DP-47]	123 35.573 W	42 55.109 N
[DP-50]	123 35.218 W	42 54.856 N
[DP-55]	123 34.977 W	42 54.507 N
[DP-59]	123 35.038 W	42 56.459 N
[DP-60]	123 35.840 W	42 56.133 N
[DP-80]	123 36.154 W	42 56.057 N

- Legend**
- Fire Perimeter
  - Drop Point
  - Incident Command Post
  - Repeater
  - Water Source
  - BLM Ownership
  - Oregon Dept of Forestry (BOF)



ODF GIS, Team 3  
 August 30, 2017  
 0033 Hours