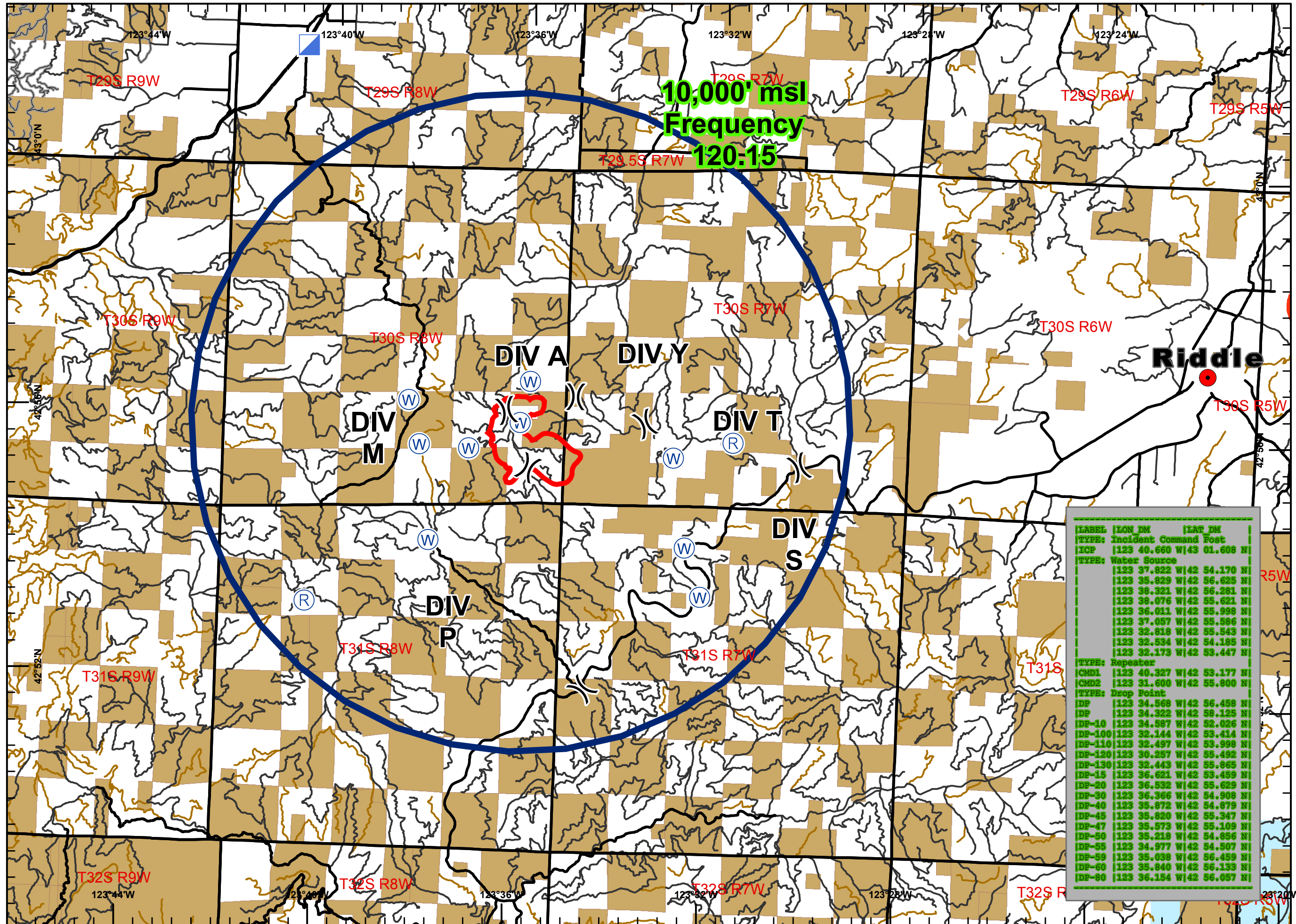








**HORSE PRAIRIE**  
**OR733S-11418**  
**Aug 31, 2017**  
**Day Shift**  
**Approx 4,999 ac**

**TFR MAP**

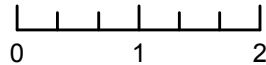


**Legend**

-  Fire Perimeter
-  Incident Command Post
-  Repeater
-  Water Source
-  BLM Ownership
-  Oregon Dept of Forestry (BOF)



**Miles**



ODF GIS, Team 3  
 August 31, 2017  
 0028 Hours

LABEL	LONG DM	LAT DM
ICP	123 40.660 W	42 01.608 N
TYPE: Incident Command Post		
TYPE: Water Source		
	123 37.822 W	42 54.170 N
	123 35.829 W	42 56.625 N
	123 38.321 W	42 56.281 N
	123 38.076 W	42 55.621 N
	123 36.011 W	42 55.998 N
	123 37.057 W	42 55.586 N
	123 32.818 W	42 55.543 N
	123 32.594 W	42 54.185 N
	123 32.173 W	42 53.447 N
TYPE: Repeater		
CMD1	123 40.327 W	42 53.177 N
CMD2	123 31.600 W	42 55.800 N
TYPE: Drop Point		
DP	123 34.568 W	42 56.458 N
DP	123 34.322 W	42 58.125 N
DP-10	123 34.587 W	42 52.026 N
DP-100	123 32.144 W	42 53.414 N
DP-110	123 32.497 W	42 53.998 N
DP-120	123 30.257 W	42 55.492 N
DP-130	123 32.443 W	42 55.865 N
DP-15	123 36.621 W	42 53.459 N
DP-20	123 36.532 W	42 55.629 N
DP-30	123 36.366 W	42 54.908 N
DP-40	123 35.872 W	42 54.879 N
DP-45	123 35.820 W	42 55.347 N
DP-47	123 35.573 W	42 55.109 N
DP-50	123 35.218 W	42 54.856 N
DP-55	123 34.977 W	42 54.507 N
DP-59	123 35.038 W	42 56.459 N
DP-60	123 35.840 W	42 56.133 N
DP-80	123 36.154 W	42 56.057 N