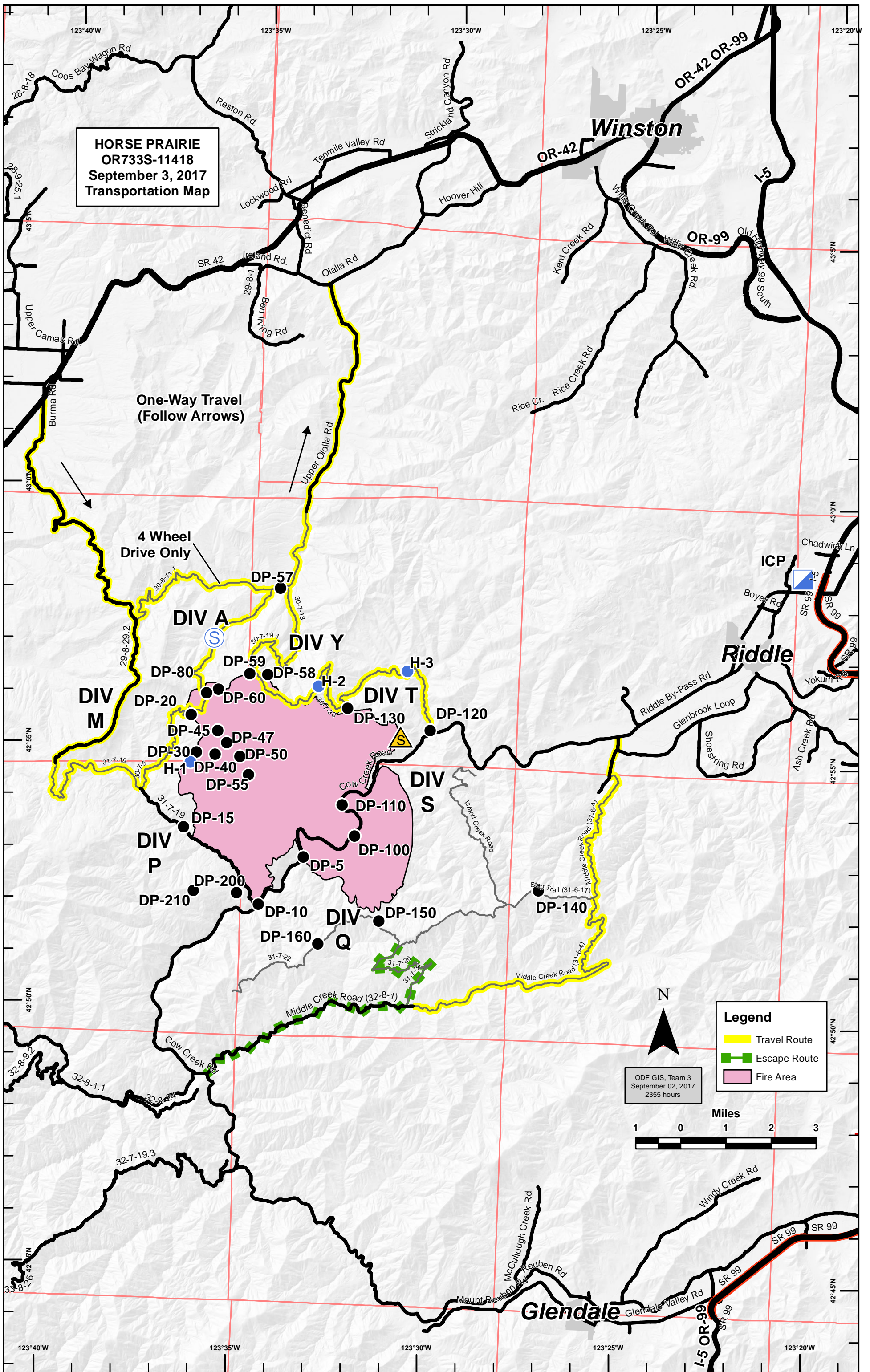


**HORSE PRAIRIE  
OR733S-11418  
September 3, 2017  
Transportation Map**



One-Way Travel  
(Follow Arrows)

4 Wheel  
Drive Only

DIV  
M

DIV  
A

DIV  
Y

DIV  
T

DIV  
S

DIV  
P

DIV  
Q

Winston

Riddle

Glendale

**Legend**

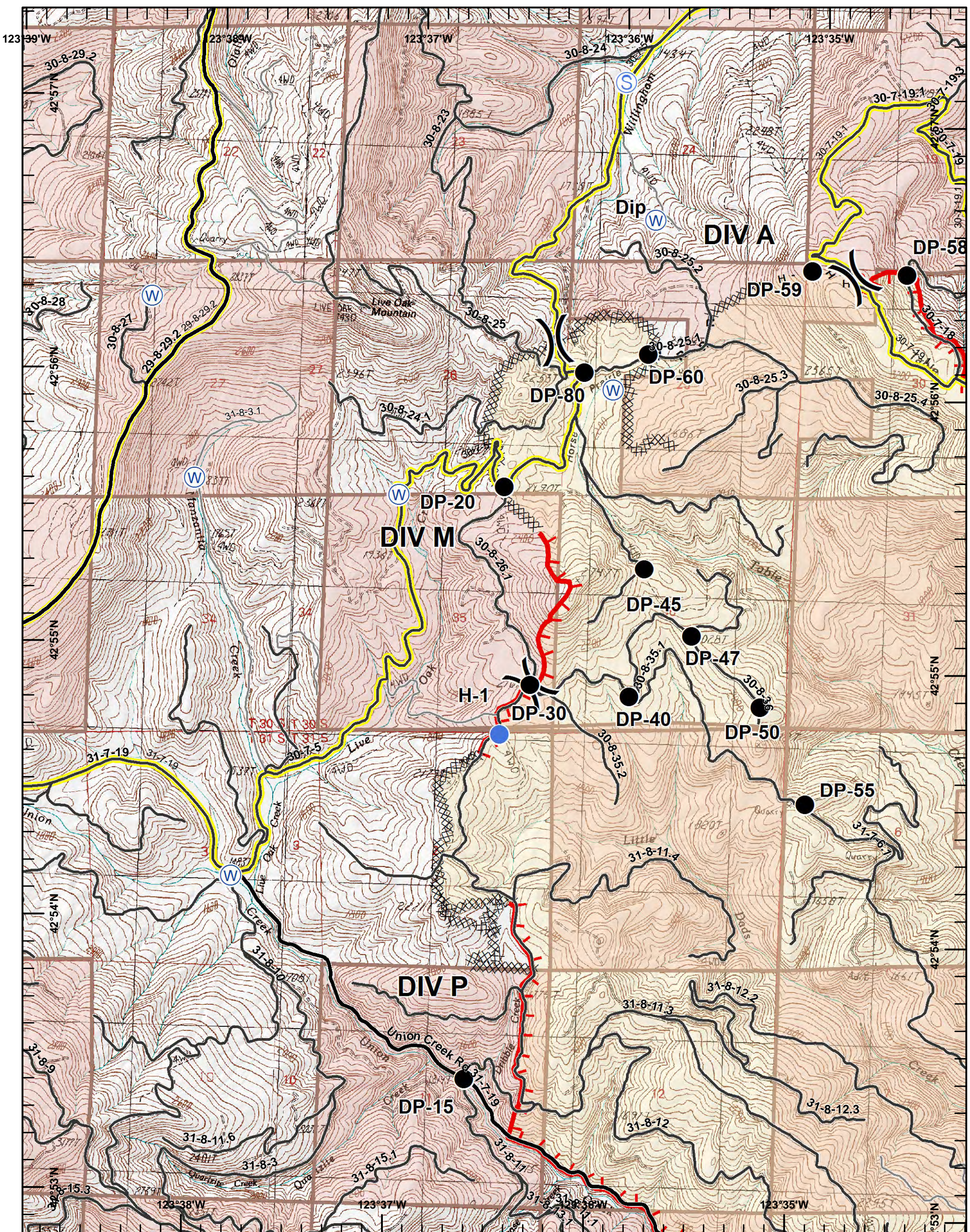
- Travel Route
- Escape Route
- Fire Area

ODF GIS, Team 3  
September 02, 2017  
2355 hours



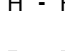






Miles







**Legend**

-  Uncontrolled Fire Edge
-  Completed Dozer Line
-  H - H Hand Line
-  R - R Road as Completed Line
-  Drop Point
-  Helispot
-  Staging Area
-  Water Source
-  Travel Route

**N West  
Page 1**

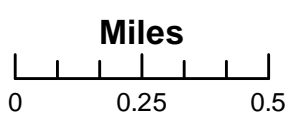
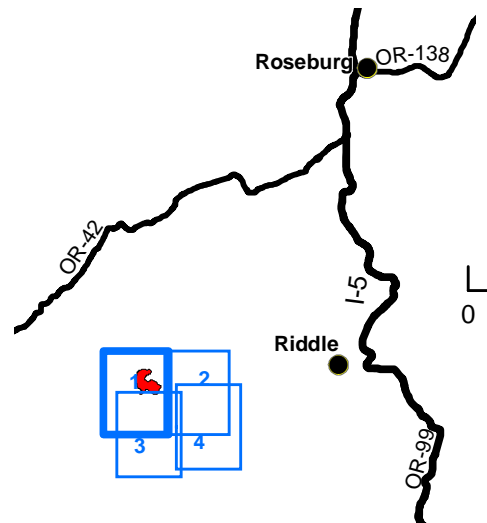
Page 1 of 4



**HORSE PRAIRIE**  
**OR733S-114-18**  
**September 3, 2017**  
**Day Shift**  
**NAD 83**

**Approx 11,925 ac**

**Incident Action  
Plan Map**

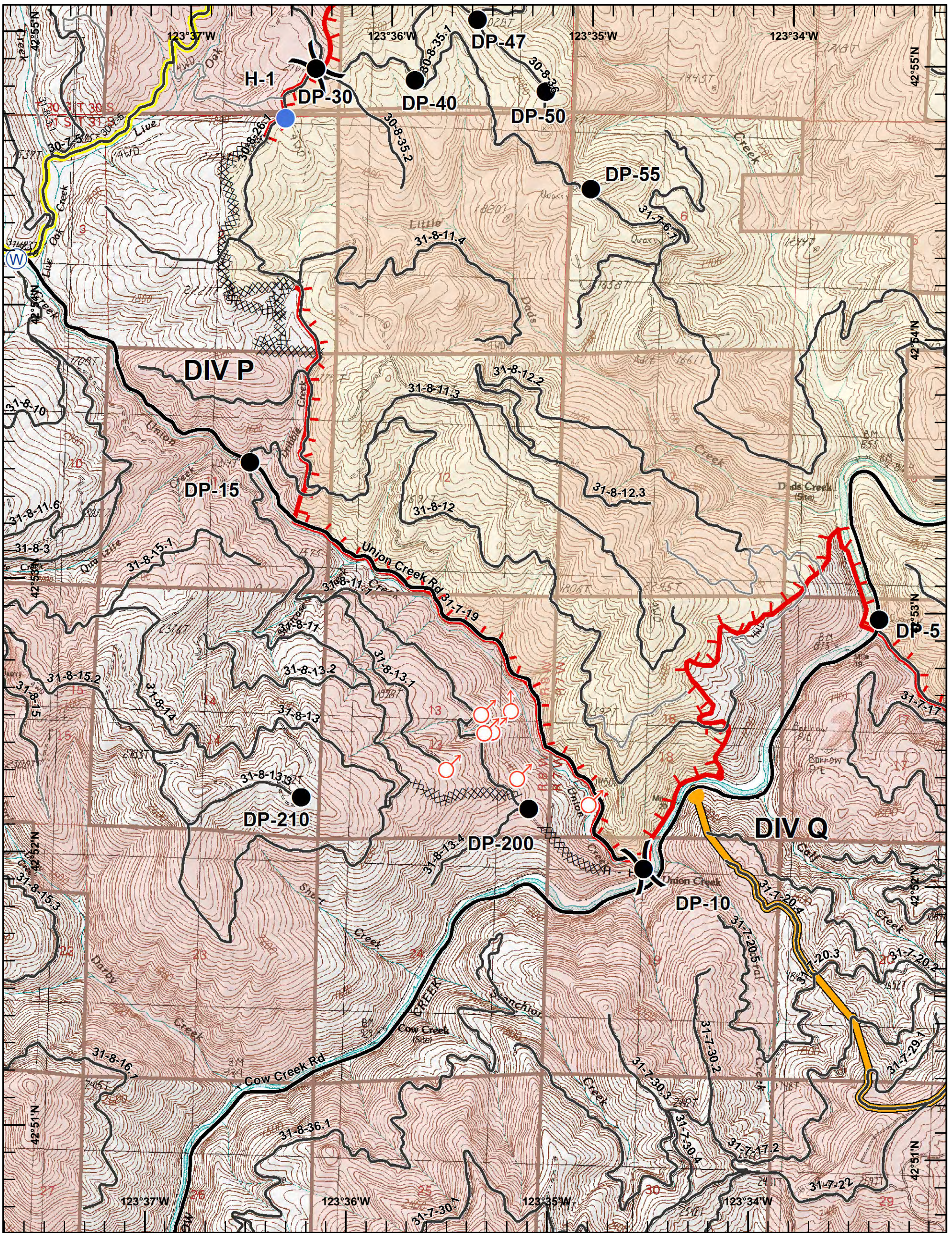


ODF GIS, Team 3  
 September 03, 2017  
 0023 Hours


















**Legend**

-  Uncontrolled Fire Edge
-  Completed Dozer Line
-  H - H Hand Line
-  Management Action Point
-  Drop Point
-  Helispot
-  Spot Fire
-  Water Source
-  Travel Route
-  DMM

**S West  
Page 3**

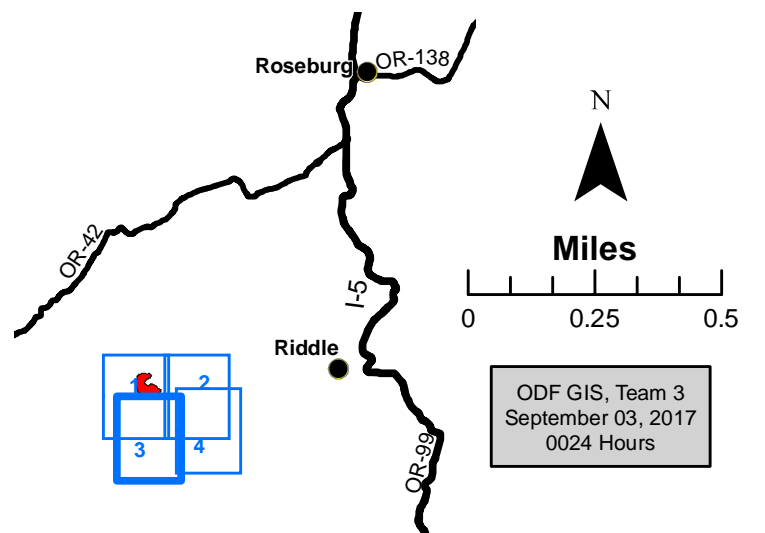
Page 3 of 4



**HORSE PRAIRIE  
OR733S-114-18  
September 3, 2017  
Day Shift  
NAD 83**

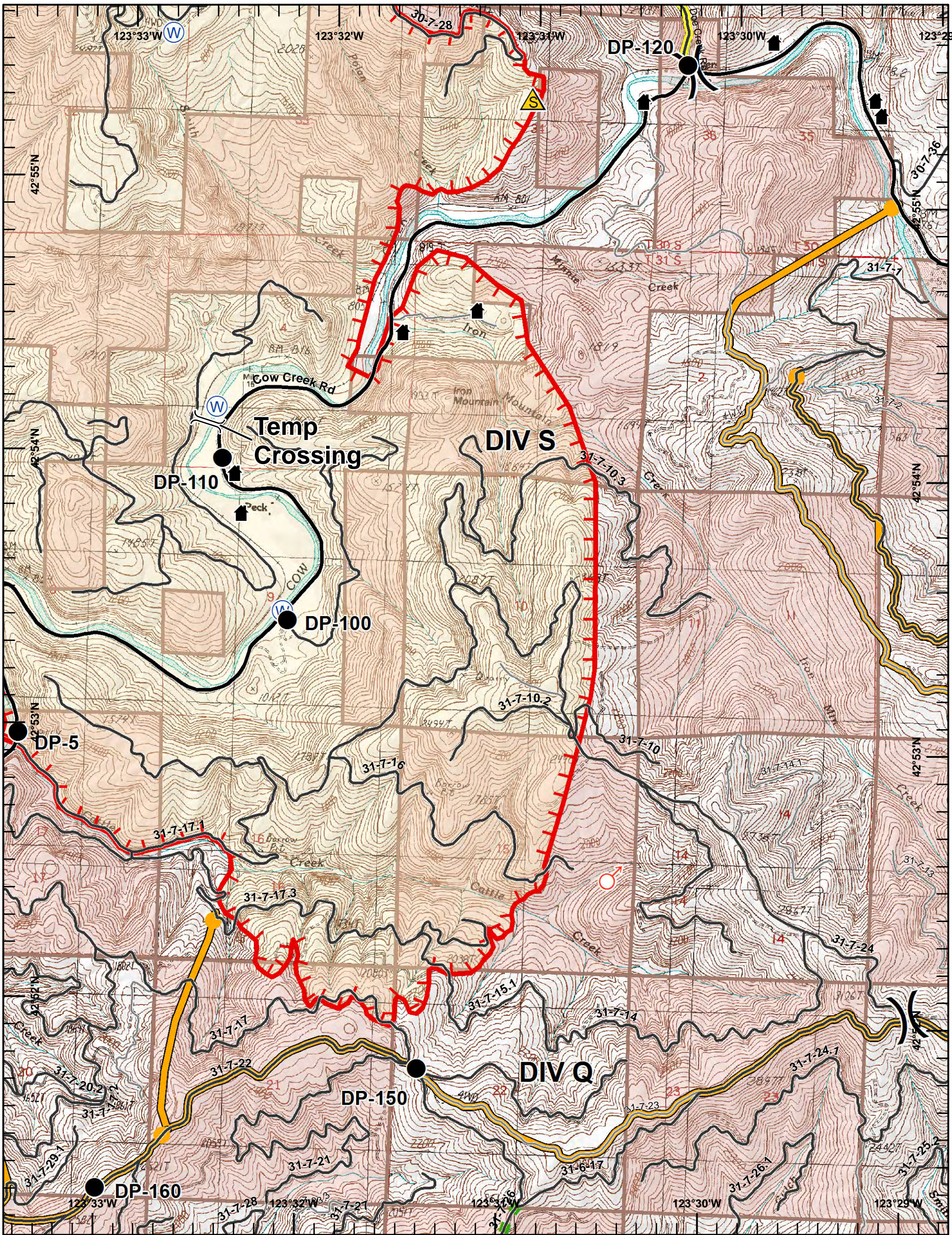
**Approx 11,925 ac**

**Incident Action  
Plan Map**












ODF GIS, Team 3  
September 03, 2017  
0024 Hours





**Legend**

-  Uncontrolled Fire Edge
-  Completed Dozer Line
-  Escape Route
-  Management Action Point
-  Drop Point
-  Safety Zone
-  Spot Fire
-  Water Source
-  Travel Route

**S East  
Page 4**

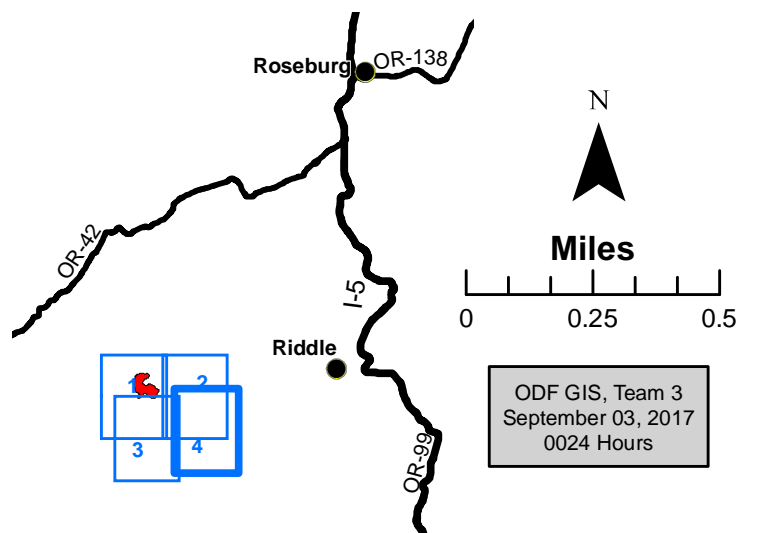
Page 4 of 4



**HORSE PRAIRIE  
OR733S-114-18  
September 3, 2017  
Day Shift  
NAD 83**

**Approx 11,925 ac**

**Incident Action  
Plan Map**



ODF GIS, Team 3  
September 03, 2017  
0024 Hours