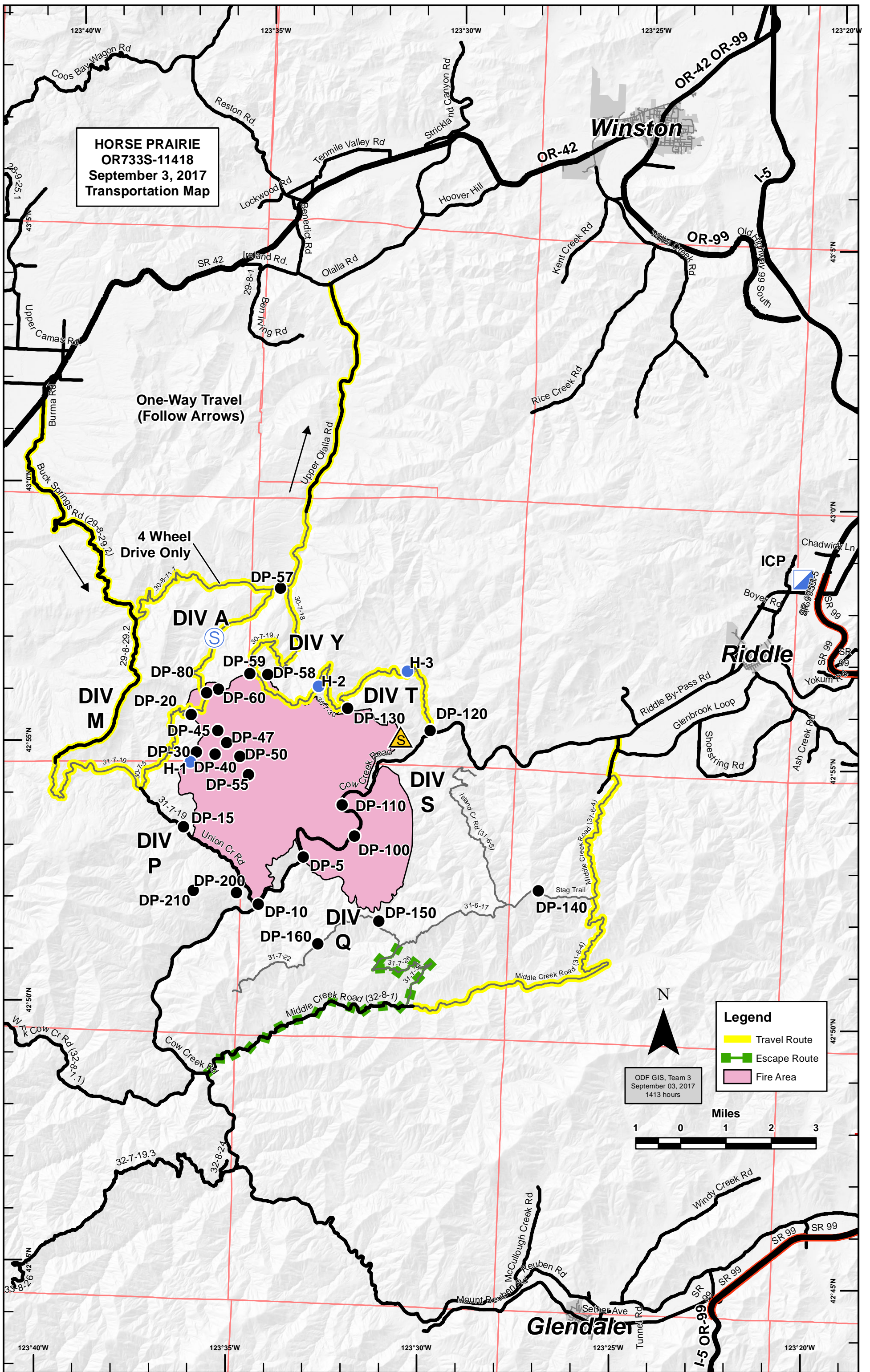


**HORSE PRAIRIE
OR733S-11418
September 3, 2017
Transportation Map**

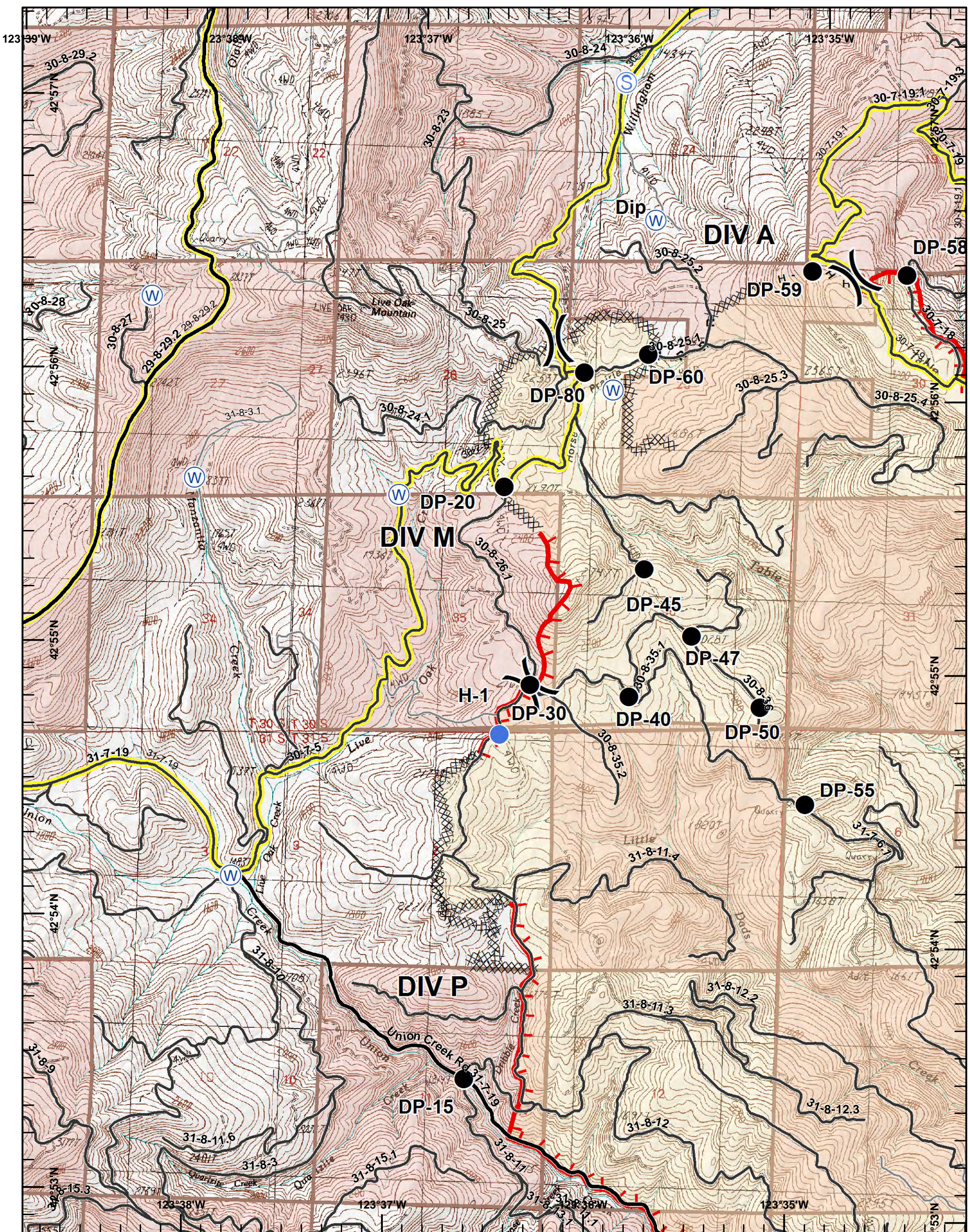


ODF GIS, Team 3
September 03, 2017
1413 hours



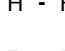






Legend

- Travel Route
- Escape Route
- Fire Area





Legend

-  Uncontrolled Fire Edge
-  Completed Dozer Line
-  H - H Hand Line
-  R - R Road as Completed Line
-  Drop Point
-  Helispot
-  Staging Area
-  Water Source
-  Travel Route

**N West
Page 1**

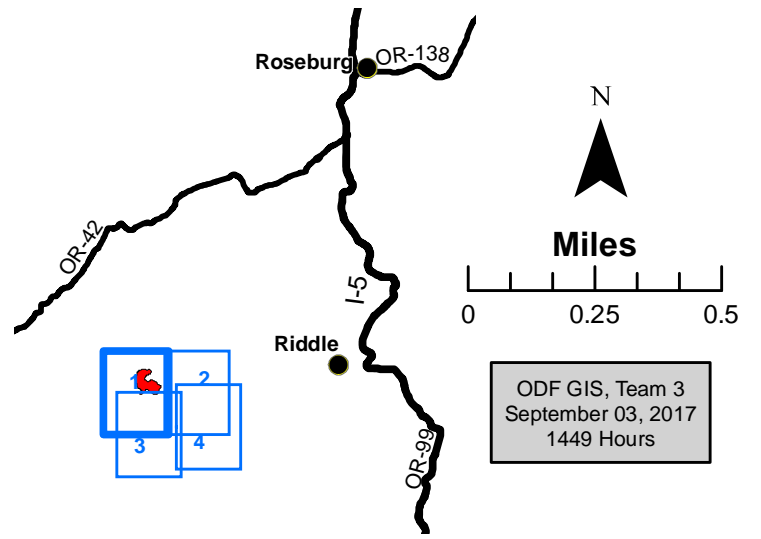
Page 1 of 4



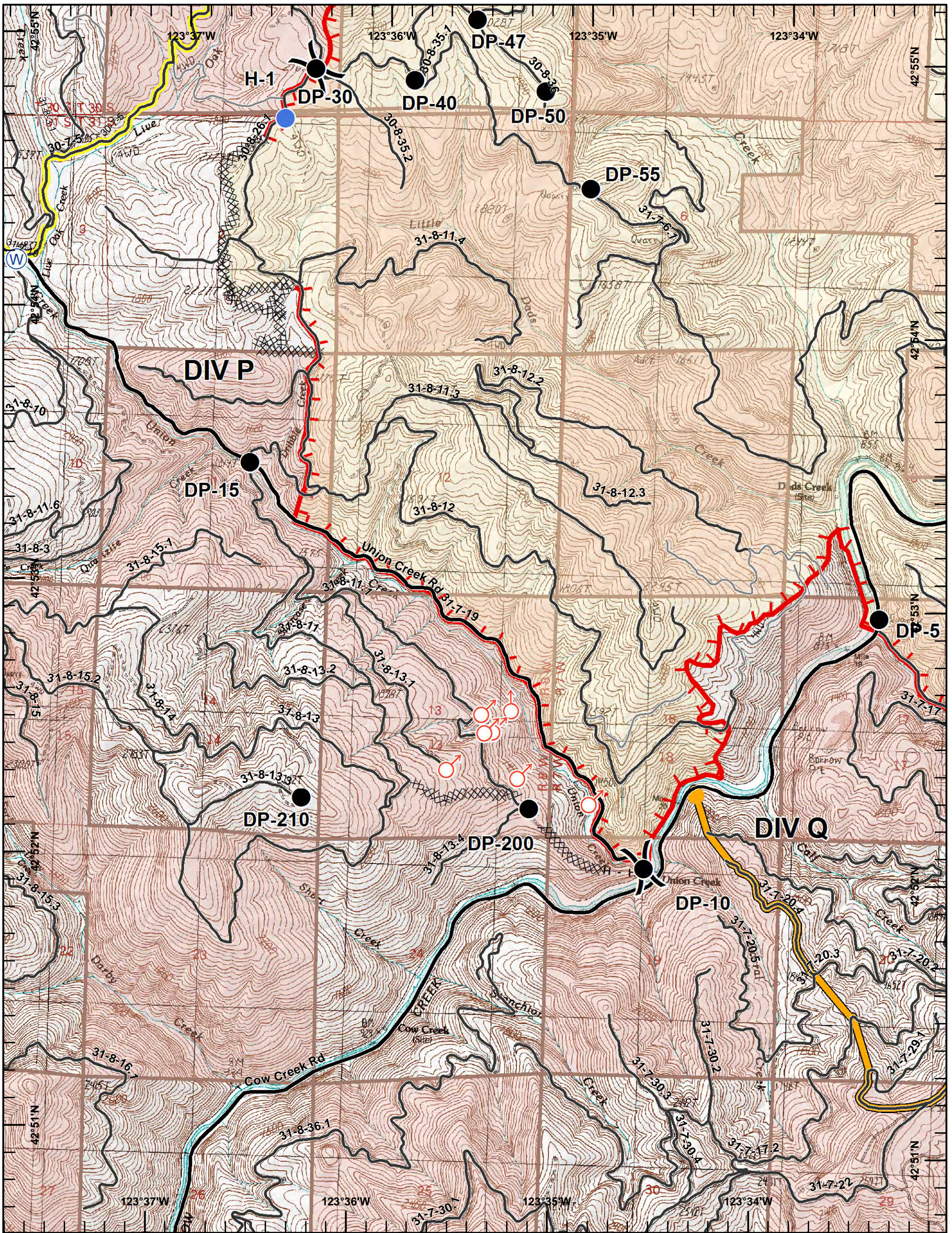
HORSE PRAIRIE
 OR733S-114-18
 September 3, 2017
 Night Shift
 NAD 83

Approx 11,925 ac



**Incident Action
Plan Map**



ODF GIS, Team 3
 September 03, 2017
 1449 Hours



Legend

-  Uncontrolled Fire Edge
-  Completed Dozer Line
-  H - H Hand Line
-  Contingency Line
-  Drop Point
-  Helispot
-  Spot Fire
-  Water Source
-  Travel Route
- DMM

**S West
Page 3**

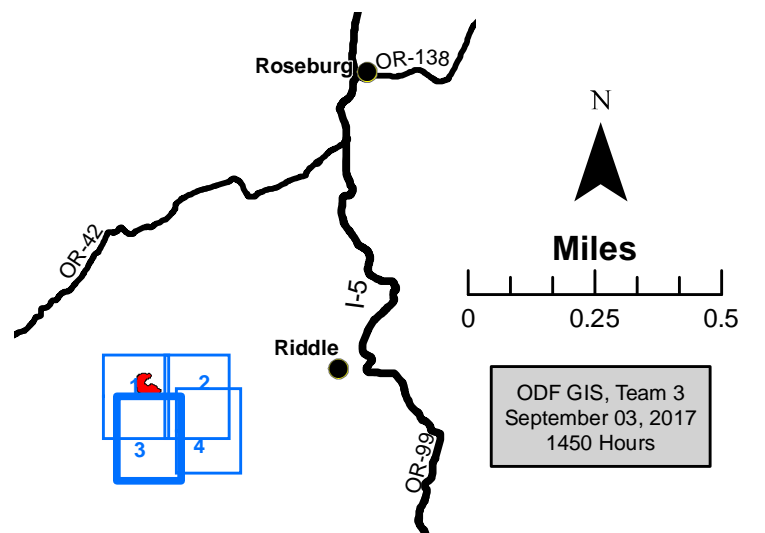
Page 3 of 4



**HORSE PRAIRIE
OR733S-114-18
September 3, 2017
Night Shift
NAD 83**

Approx 11,925 ac

**Incident Action
Plan Map**



ODF GIS, Team 3
September 03, 2017
1450 Hours

