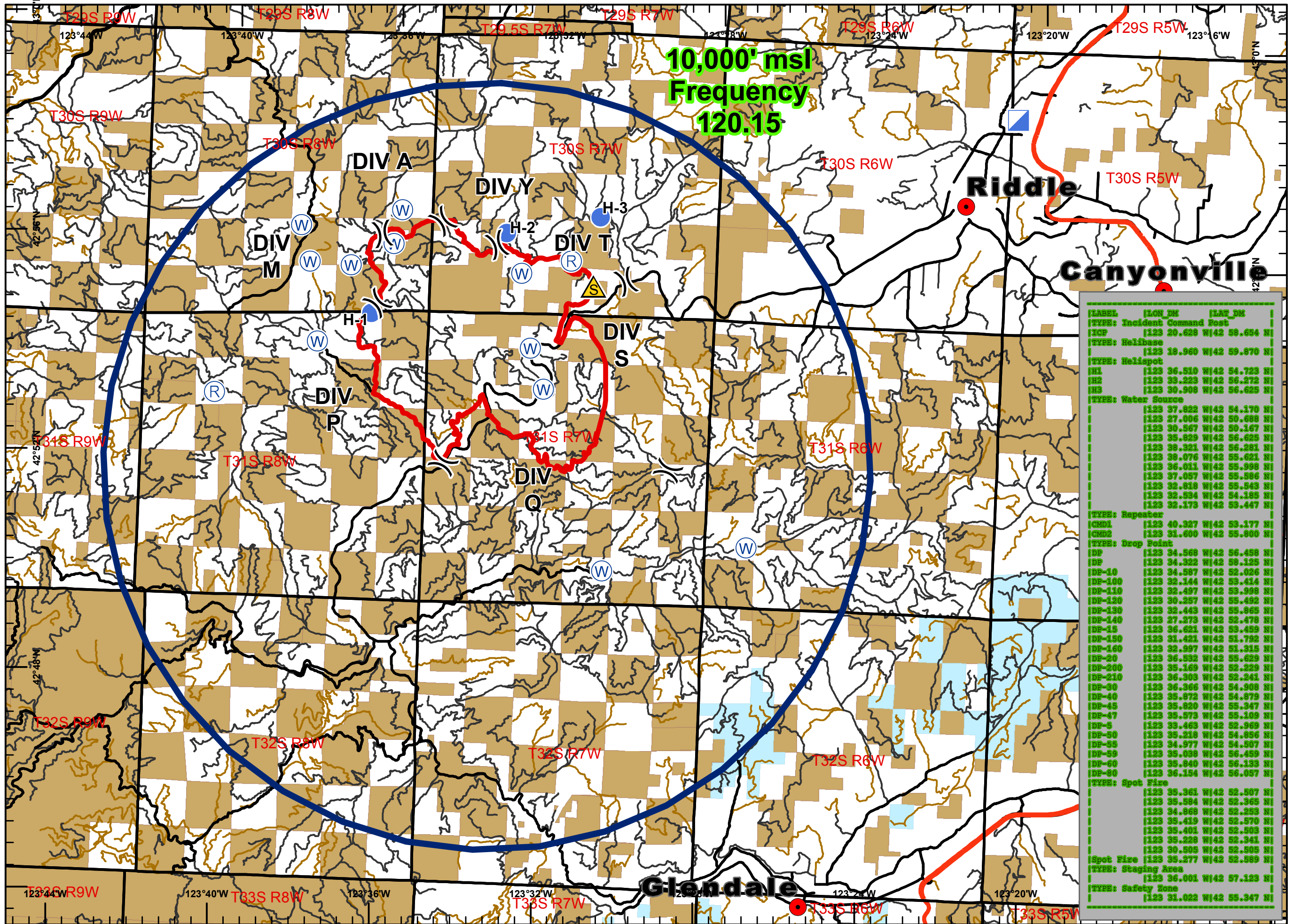


HORSE PRAIRIE
OR733S-11418
 Sept 3, 2017
 Day Shift
 Approx 11,925 ac

TFR MAP

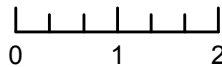


Legend

- Helispot
- Incident Command Post
- Repeater
- Safety Zone
- Water Source
- BLM Ownership
- Oregon Dept of Forestry (BOF)



Miles



ODF GIS, Team 3
 September 02, 2017
 2234 Hours

[LABEL]	[LON_DM]	[LAT_DM]
[TYPE: Incident Command Post]	[123 20.628 W]	[42 58.654 N]
[TYPE: Helibase]	[123 18.960 W]	[42 59.870 N]
[TYPE: Helispot]	[123 36.510 W]	[42 54.723 N]
[H1]	[123 39.223 W]	[42 56.272 N]
[H2]	[123 30.908 W]	[42 56.625 N]
[H3]	[123 37.823 W]	[42 54.170 N]
[123 27.006 W]	[42 50.688 N]	
[123 30.567 W]	[42 50.167 N]	
[123 35.829 W]	[42 56.625 N]	
[123 38.321 W]	[42 56.281 N]	
[123 38.076 W]	[42 55.621 N]	
[123 36.011 W]	[42 55.998 N]	
[123 37.057 W]	[42 55.586 N]	
[123 32.818 W]	[42 55.543 N]	
[123 32.534 W]	[42 54.185 N]	
[123 32.173 W]	[42 55.447 N]	
[TYPE: Repeater]	[123 40.327 W]	[42 59.177 N]
[CMD1]	[123 31.600 W]	[42 55.800 N]
[CMD2]	[123 31.600 W]	[42 55.800 N]
[TYPE: Drop Point]	[123 34.568 W]	[42 56.458 N]
[DP]	[123 34.322 W]	[42 59.125 N]
[DP-10]	[123 34.587 W]	[42 52.026 N]
[DP-100]	[123 32.144 W]	[42 59.414 N]
[DP-110]	[123 32.497 W]	[42 59.956 N]
[DP-120]	[123 30.257 W]	[42 55.492 N]
[DP-130]	[123 32.443 W]	[42 55.865 N]
[DP-140]	[123 27.273 W]	[42 52.478 N]
[DP-15]	[123 36.621 W]	[42 59.459 N]
[DP-150]	[123 31.421 W]	[42 51.792 N]
[DP-160]	[123 32.997 W]	[42 51.315 N]
[DP-20]	[123 36.532 W]	[42 55.629 N]
[DP-200]	[123 35.169 W]	[42 52.229 N]
[DP-210]	[123 36.303 W]	[42 52.241 N]
[DP-30]	[123 36.366 W]	[42 54.908 N]
[DP-40]	[123 35.672 W]	[42 54.879 N]
[DP-45]	[123 35.820 W]	[42 55.347 N]
[DP-47]	[123 35.573 W]	[42 55.109 N]
[DP-5]	[123 33.463 W]	[42 52.969 N]
[DP-50]	[123 35.218 W]	[42 54.856 N]
[DP-55]	[123 34.977 W]	[42 54.507 N]
[DP-59]	[123 35.038 W]	[42 56.459 N]
[DP-60]	[123 35.840 W]	[42 56.133 N]
[DP-80]	[123 36.154 W]	[42 56.057 N]
[TYPE: Spot Fire]	[123 35.361 W]	[42 52.507 N]
[123 35.594 W]	[42 52.365 N]	
[123 34.868 W]	[42 52.253 N]	
[123 35.419 W]	[42 52.570 N]	
[123 35.401 W]	[42 52.503 N]	
[123 35.228 W]	[42 52.341 N]	
[123 30.505 W]	[42 52.505 N]	
[Spot Fire]	[123 35.277 W]	[42 52.589 N]
[TYPE: Staging Area]	[123 36.001 W]	[42 57.123 N]
[TYPE: Safety Zone]	[123 31.022 W]	[42 55.347 N]