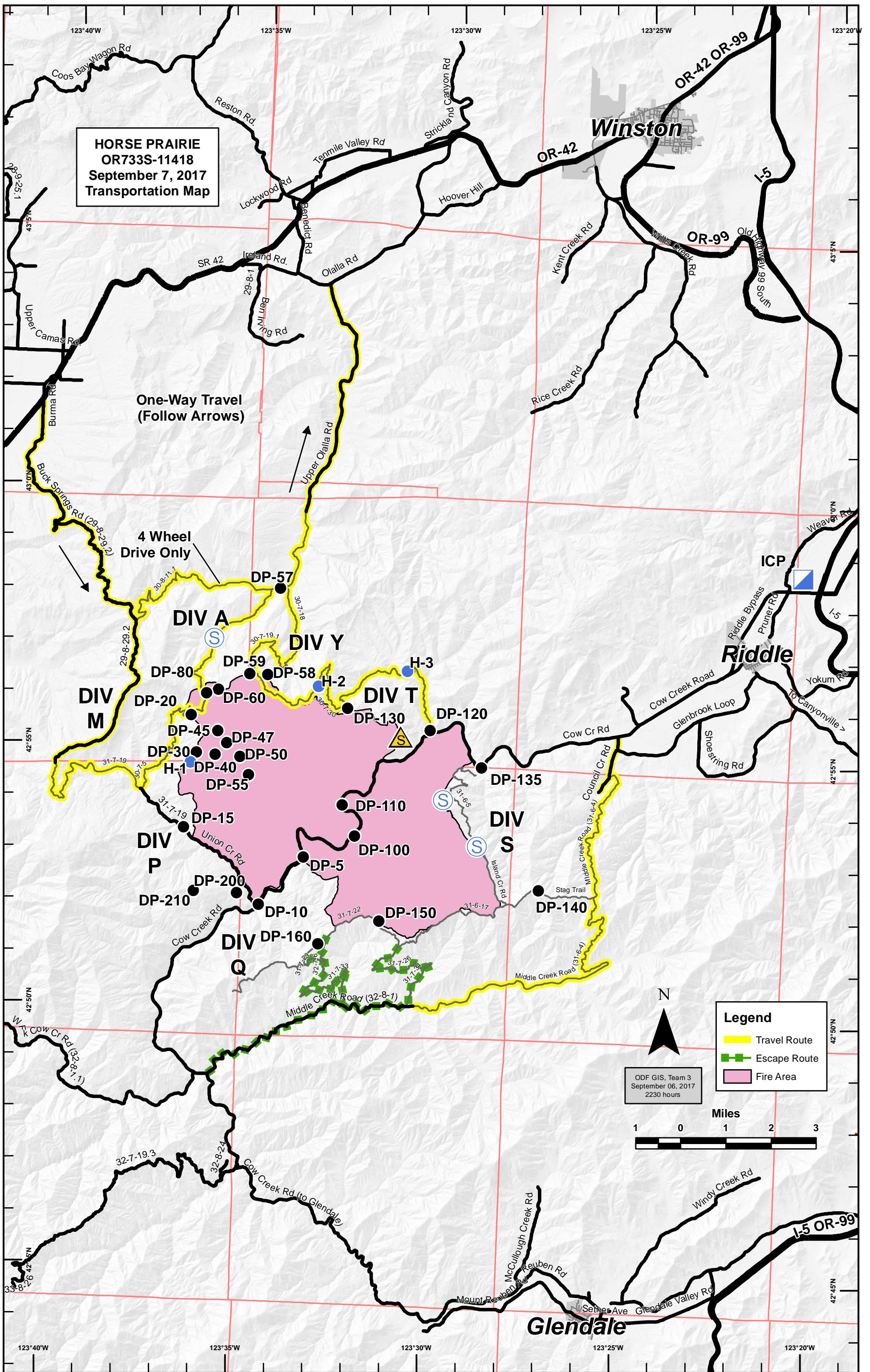


**HORSE PRAIRIE
OR733S-11418
September 7, 2017
Transportation Map**



**One-Way Travel
(Follow Arrows)**

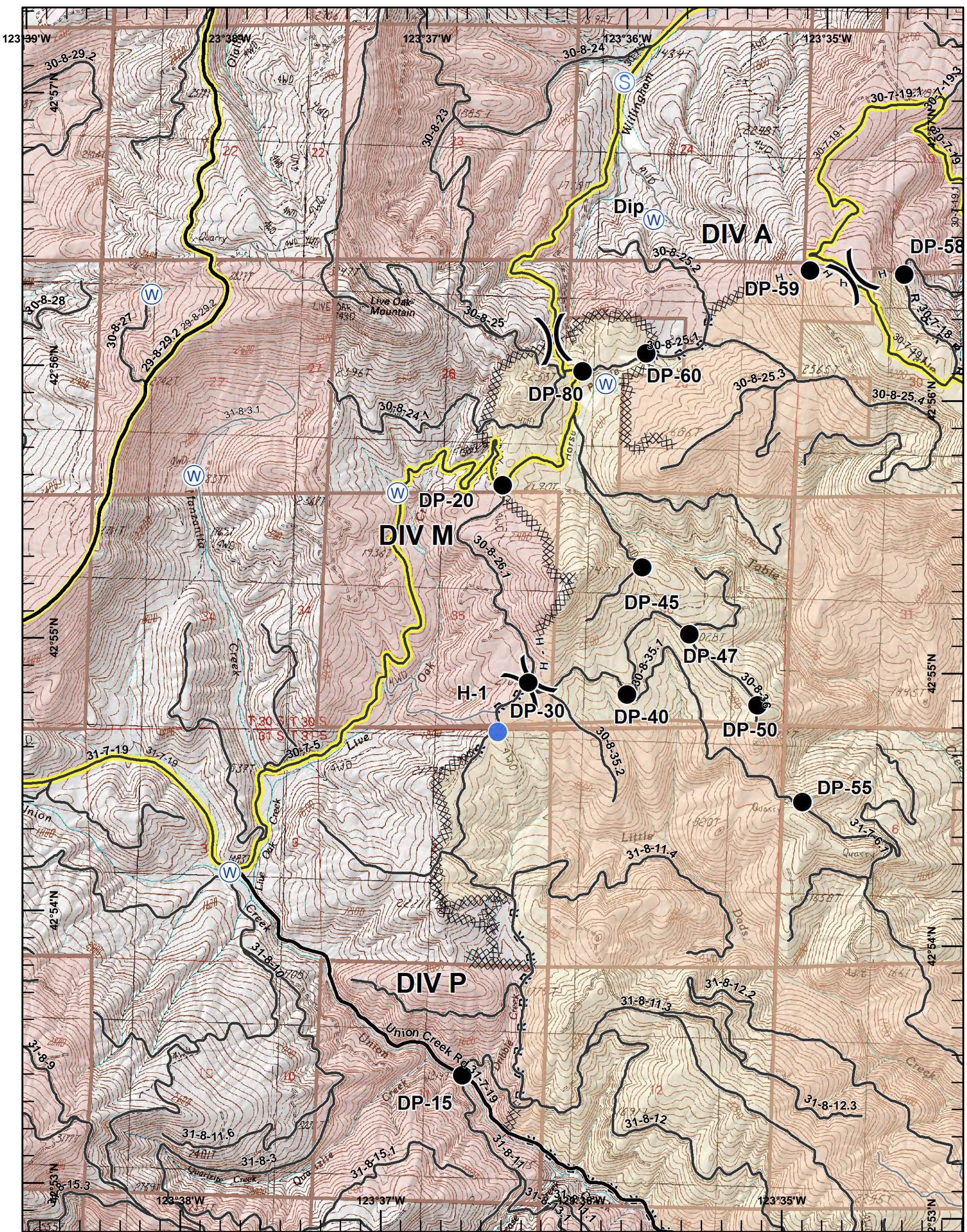
**4 Wheel
Drive Only**

Legend

- Travel Route
- - - Escape Route
- Fire Area

ODF GIS, Team 3
September 06, 2017
2230 hours





Legend

- XXXXX Completed Dozer Line
- H - H Hand Line
- R - R Road as Completed Line
- Drop Point
- Helispot
- Ⓢ Staging Area
- Ⓦ Water Source
- Travel Route

**N West
Page 1**

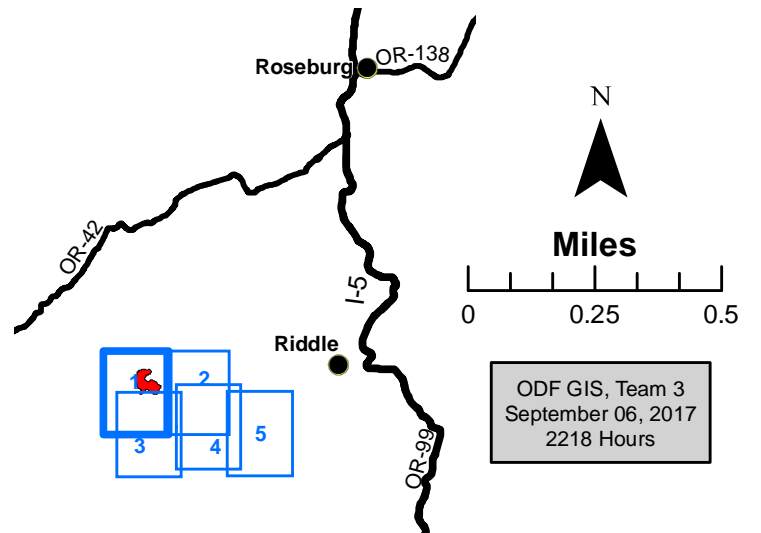
Page 1 of 5



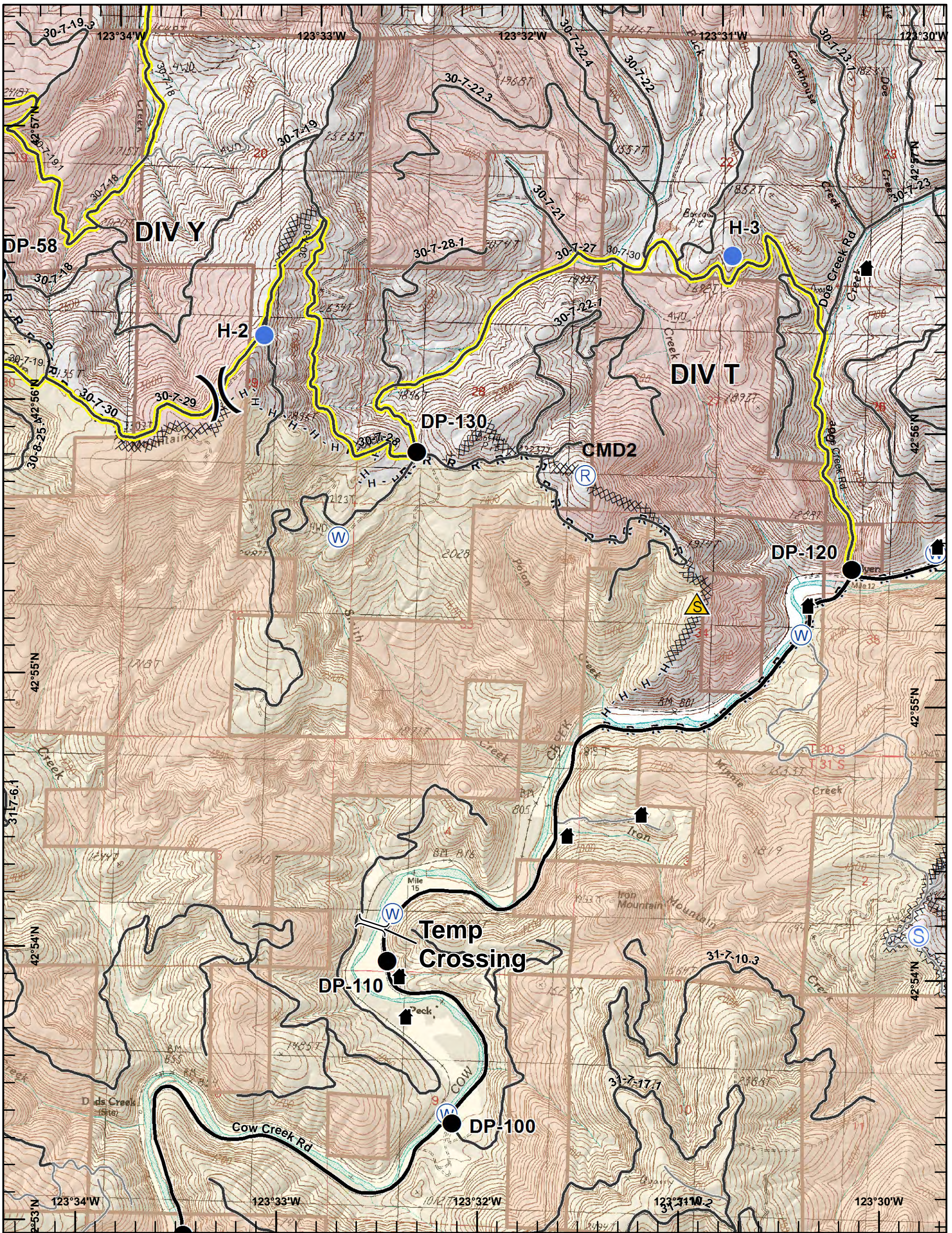
**HORSE PRAIRIE
OR733S-114-18
September 7, 2017
Day Shift
NAD 83**

Approx 16,436 ac

**Incident Action
Plan Map**



ODF GIS, Team 3
September 06, 2017
2218 Hours



Legend

- XXXXX Completed Dozer Line
- H - H Hand Line
- R - R Road as Completed Line
- Drop Point
- Helispot
- Ⓡ Repeater
- ⚠ Safety Zone
- Ⓢ Staging Area
- Ⓜ Water Source

**N East
Page 2**

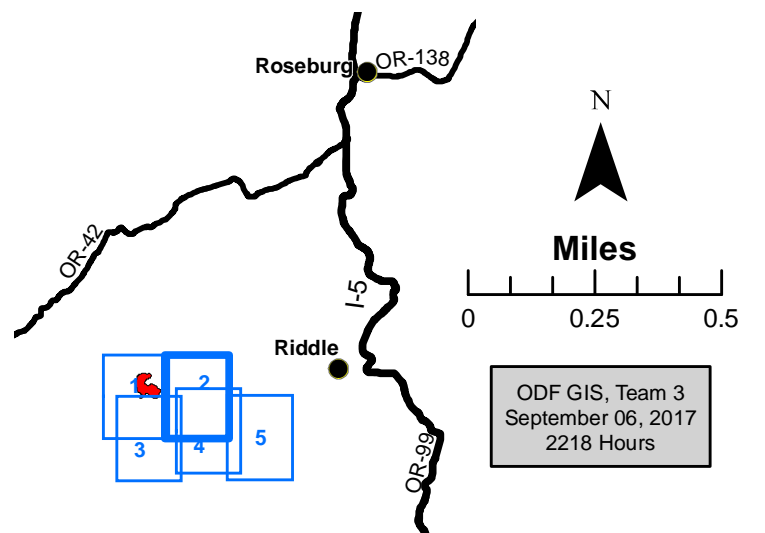
Page 2 of 5

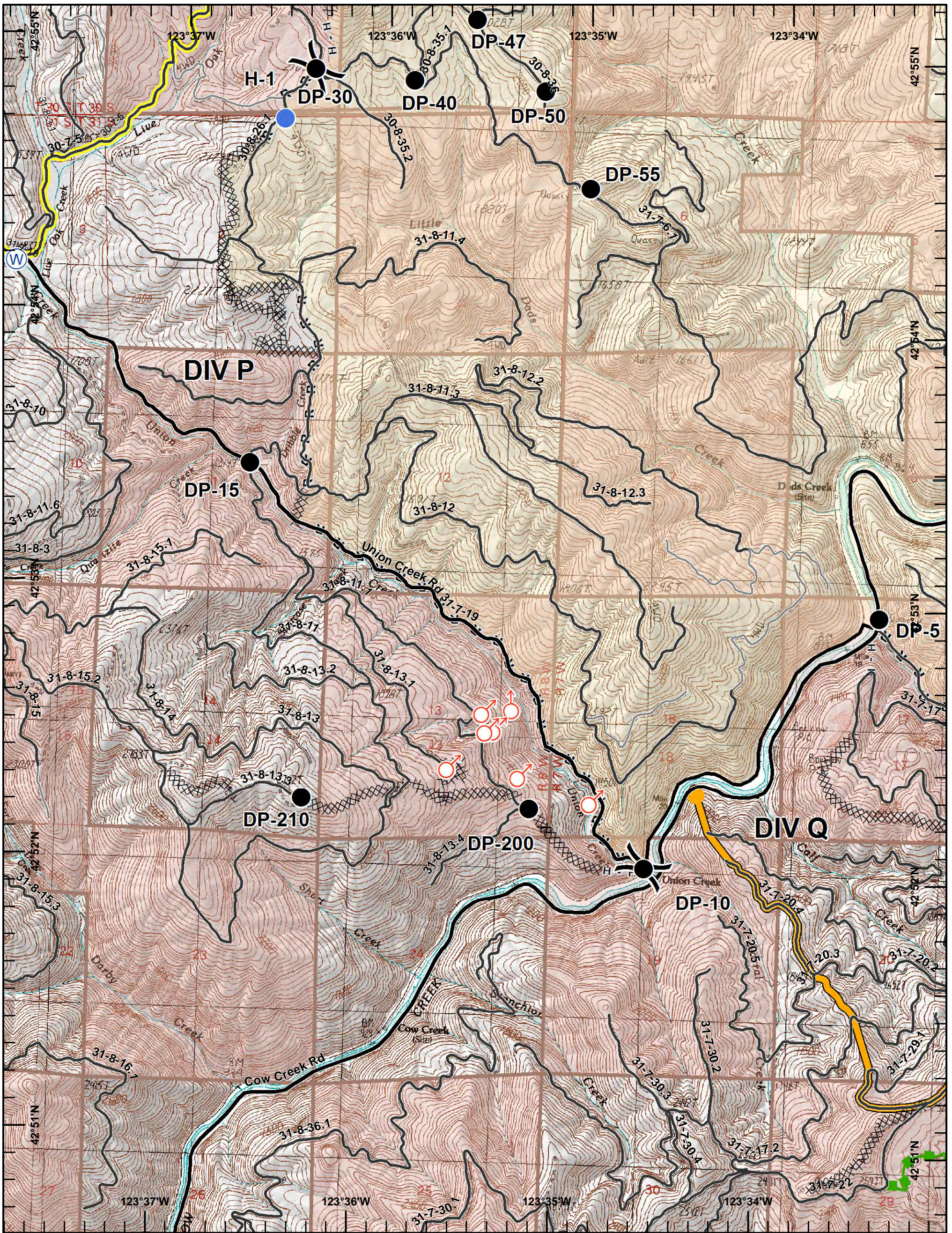


**HORSE PRAIRIE
OR733S-114-18
September 7, 2017
Day Shift
NAD 83**

Approx 16,436 ac

**Incident Action
Plan Map**





Legend

- XXXXX Completed Dozer Line
- Completed Line
- H - H Hand Line
- R - R Road as Completed Line
- Escape Route
- Contingency Line
- Drop Point
- Helispot
- ♂ Spot Fire
- ⊙ Water Source
- Travel Route

**S West
Page 3**

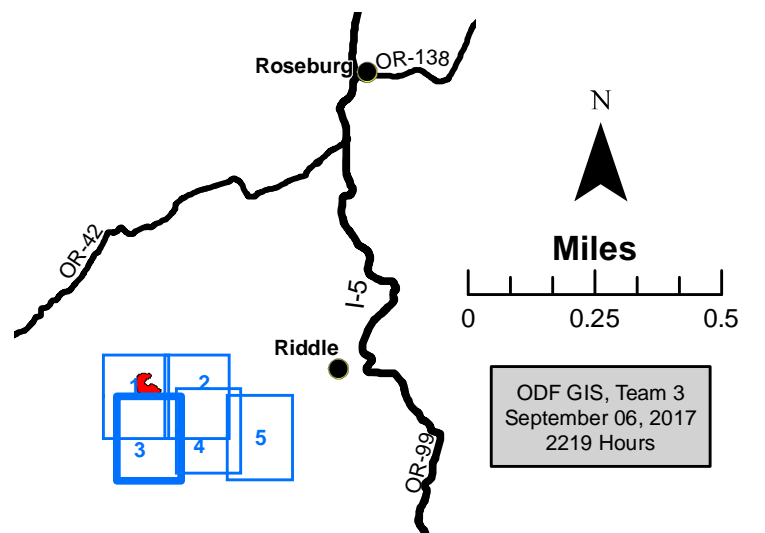
Page 3 of 5



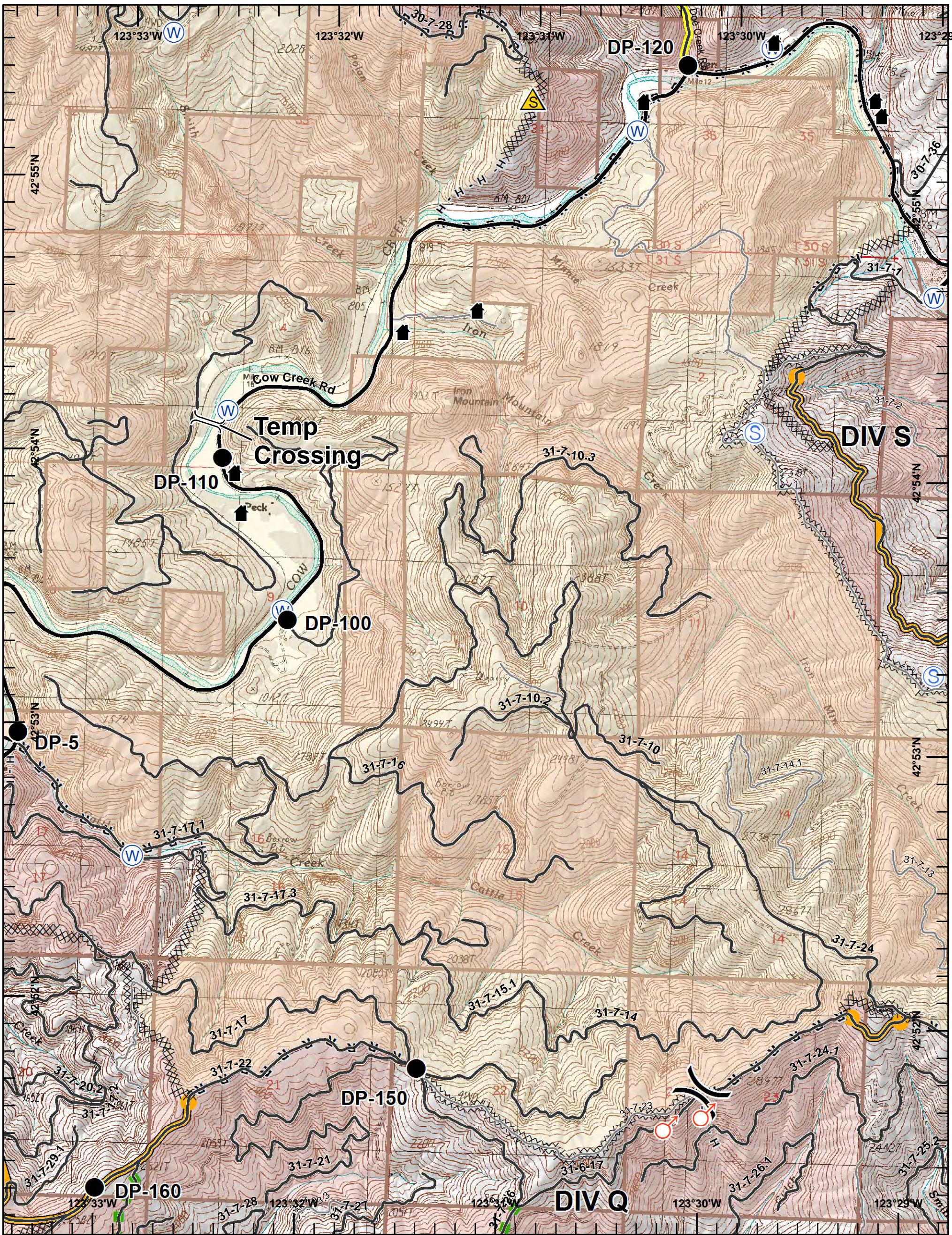
**HORSE PRAIRIE
OR733S-114-18
September 7, 2017
Day Shift
NAD 83**

Approx 16,436 ac

**Incident Action
Plan Map**



ODF GIS, Team 3
September 06, 2017
2219 Hours



- Legend**
- XXXXX Completed Dozer Line
 - Completed Line
 - H - H Hand Line
 - R - R Road as Completed Line
 - Escape Route
 - Contingency Line
 - Drop Point
 - WX Mobile Weather Unit
 - ▲ Safety Zone
 - Spot Fire

**South
Page 4**

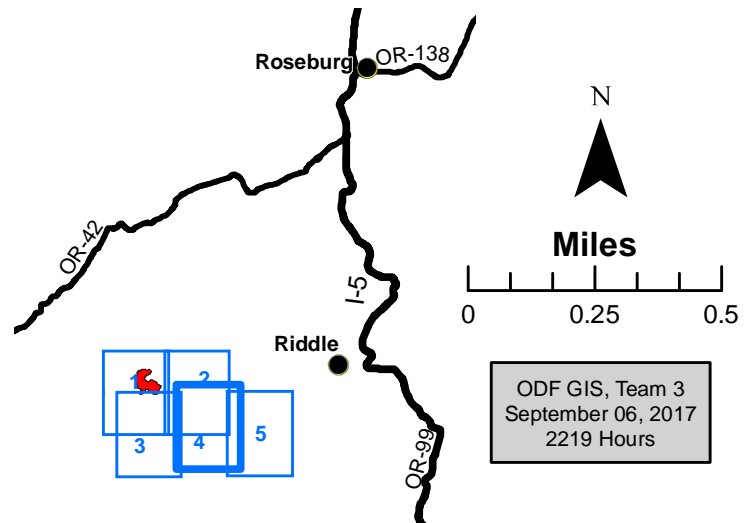
Page 4 of 5



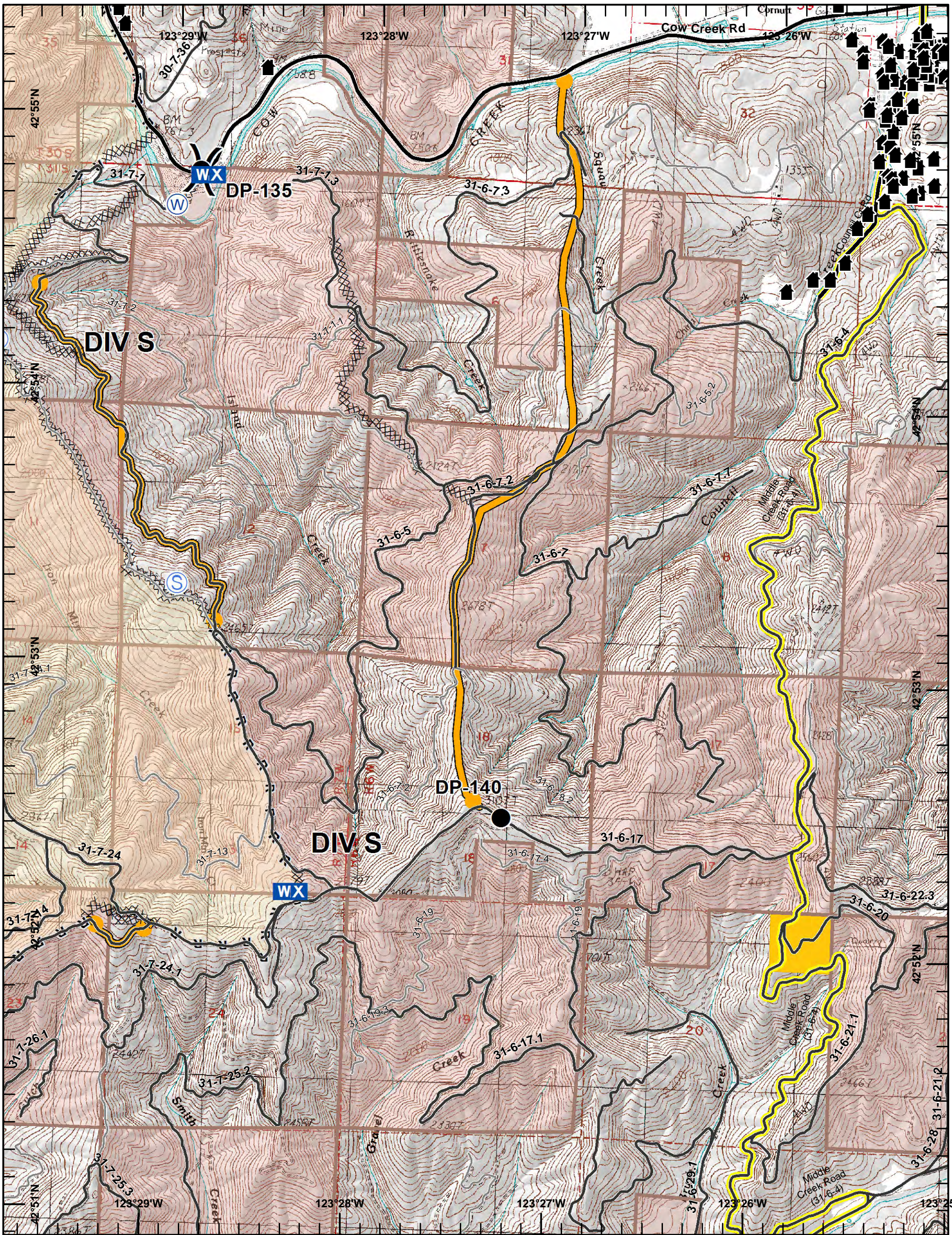
**HORSE PRAIRIE
OR733S-114-18
September 7, 2017
Day Shift
NAD 83**

Approx 16,436 ac

**Incident Action
Plan Map**



ODF GIS, Team 3
September 06, 2017
2219 Hours



Legend

- XXXXX Completed Dozer Line
- R - R Road as Completed Line
- Contingency Line
- Drop Point
- WX Mobile Weather Unit
- S Staging Area
- W Water Source
- Travel Route

**S East
Page 5**

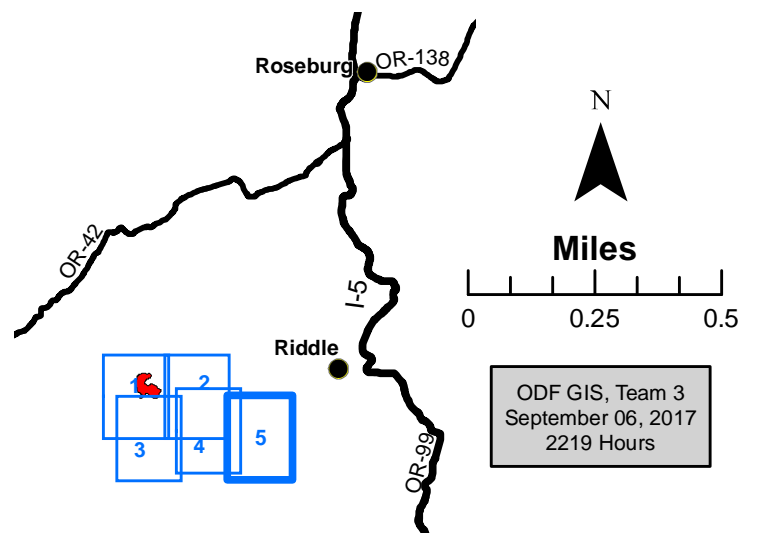
Page 5 of 5



**HORSE PRAIRIE
OR733S-114-18
September 7, 2017
Day Shift
NAD 83**

Approx 16,436 ac

**Incident Action
Plan Map**



ODF GIS, Team 3
September 06, 2017
2219 Hours