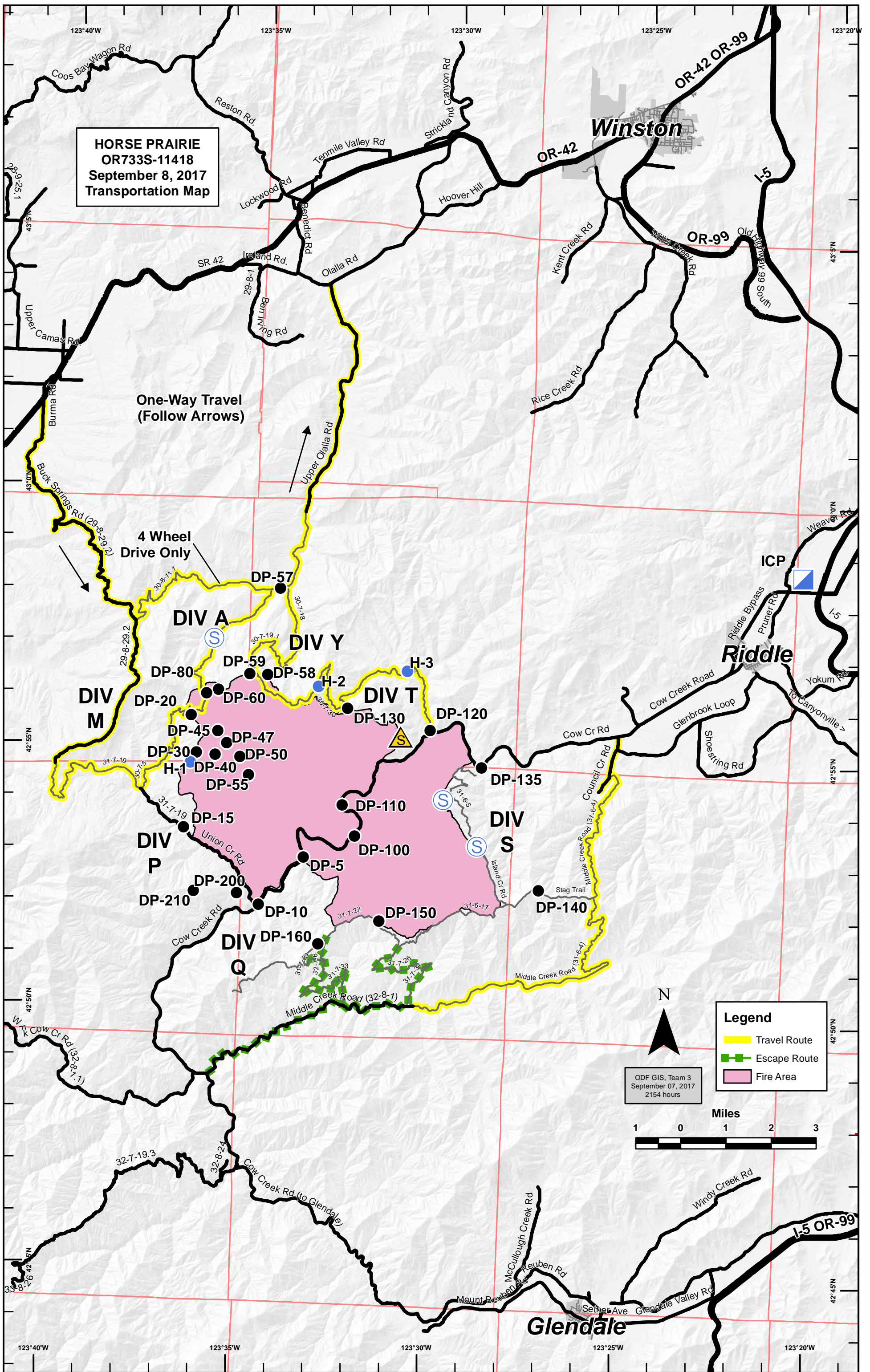


**HORSE PRAIRIE
OR733S-11418
September 8, 2017
Transportation Map**



**One-Way Travel
(Follow Arrows)**

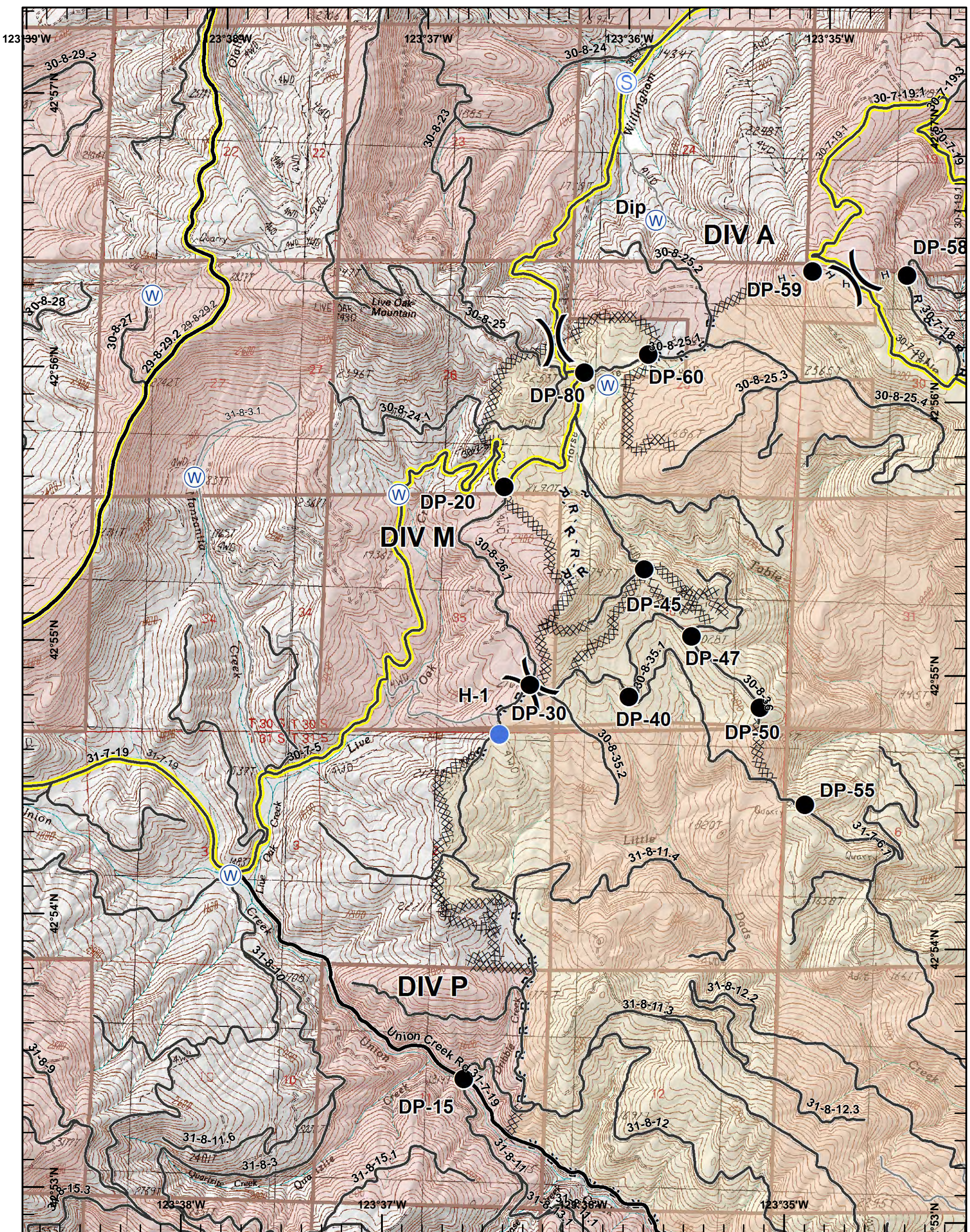
**4 Wheel
Drive Only**

Legend

- Travel Route
- - - Escape Route
- Fire Area

ODF GIS, Team 3
September 07, 2017
2154 hours





Legend

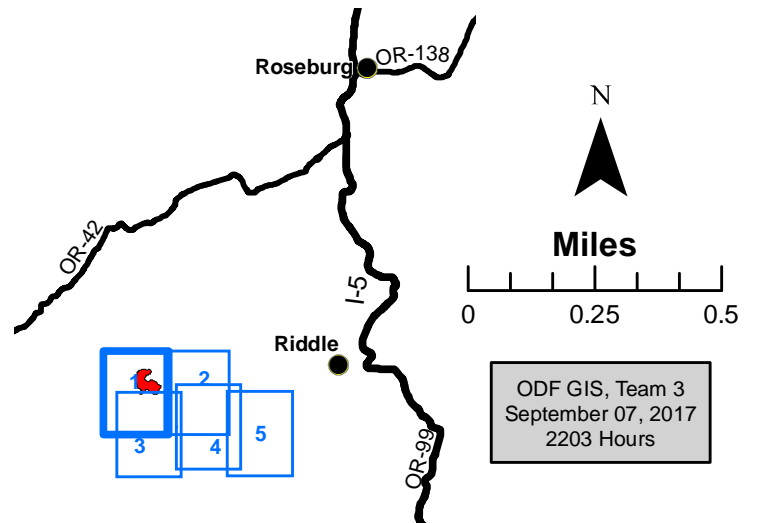
- XXXXX Completed Dozer Line
- H - H Hand Line
- R - R Road as Completed Line
- Drop Point
- Helispot
- Ⓢ Staging Area
- Ⓜ Water Source
- Travel Route

**N West
Page 1**

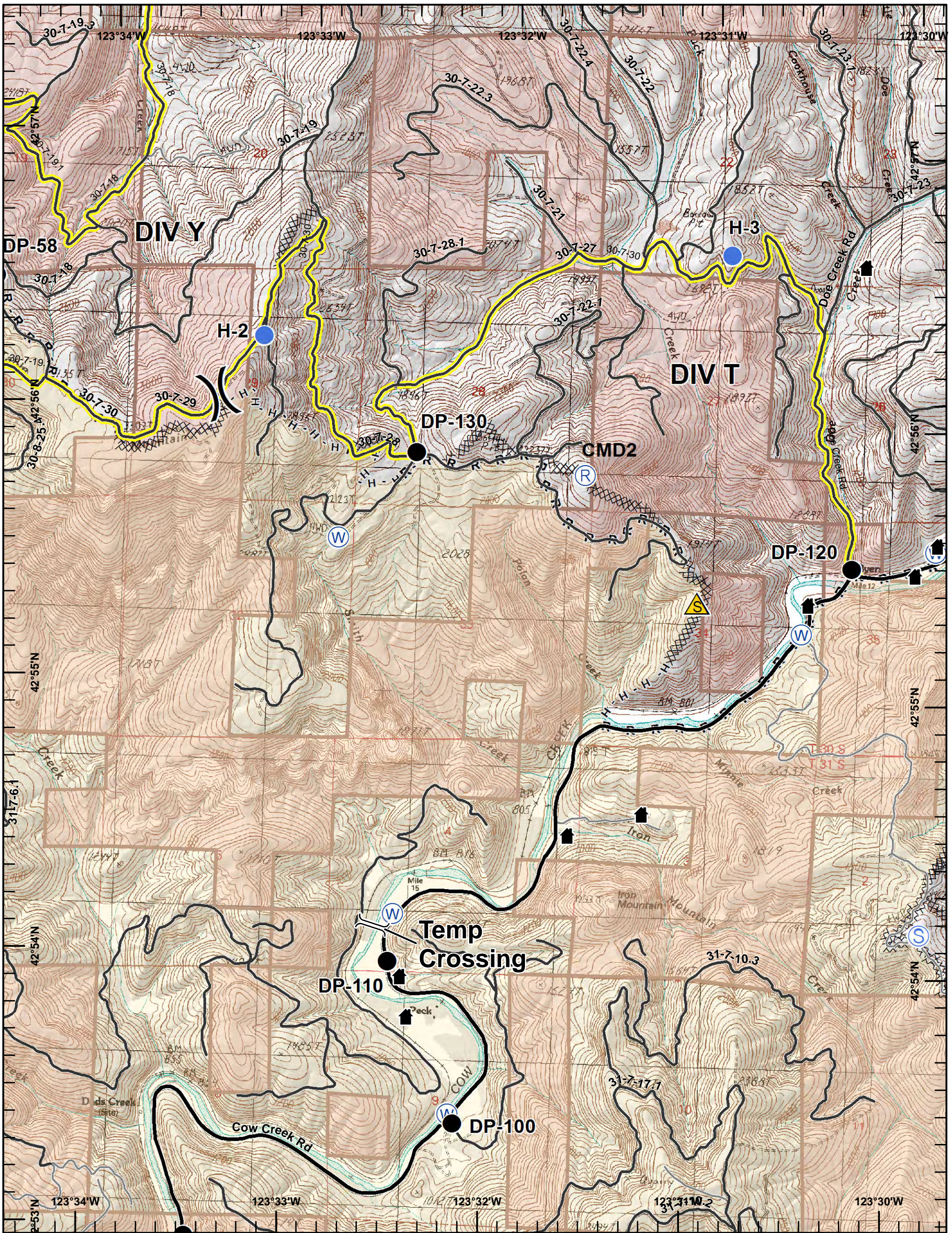
Page 1 of 5



HORSE PRAIRIE
 OR733S-114-18
 September 8, 2017
 Day Shift
 NAD 83
 16,436 ac
**Incident Action
 Plan Map**



ODF GIS, Team 3
 September 07, 2017
 2203 Hours



Legend

- XXXXX Completed Dozer Line
- H - H Hand Line
- R - R Road as Completed Line
- Drop Point
- Helispot
- Ⓡ Repeater
- ⚠ Safety Zone
- Ⓢ Staging Area
- Ⓦ Water Source

**N East
Page 2**

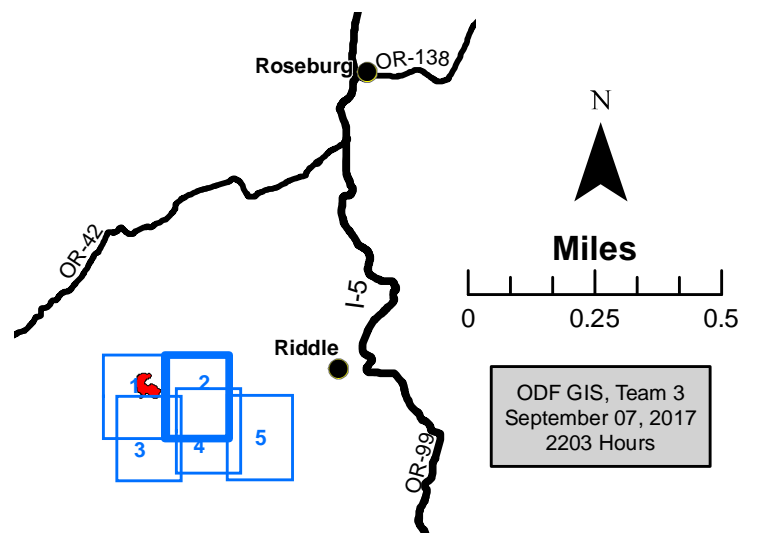
Page 2 of 5



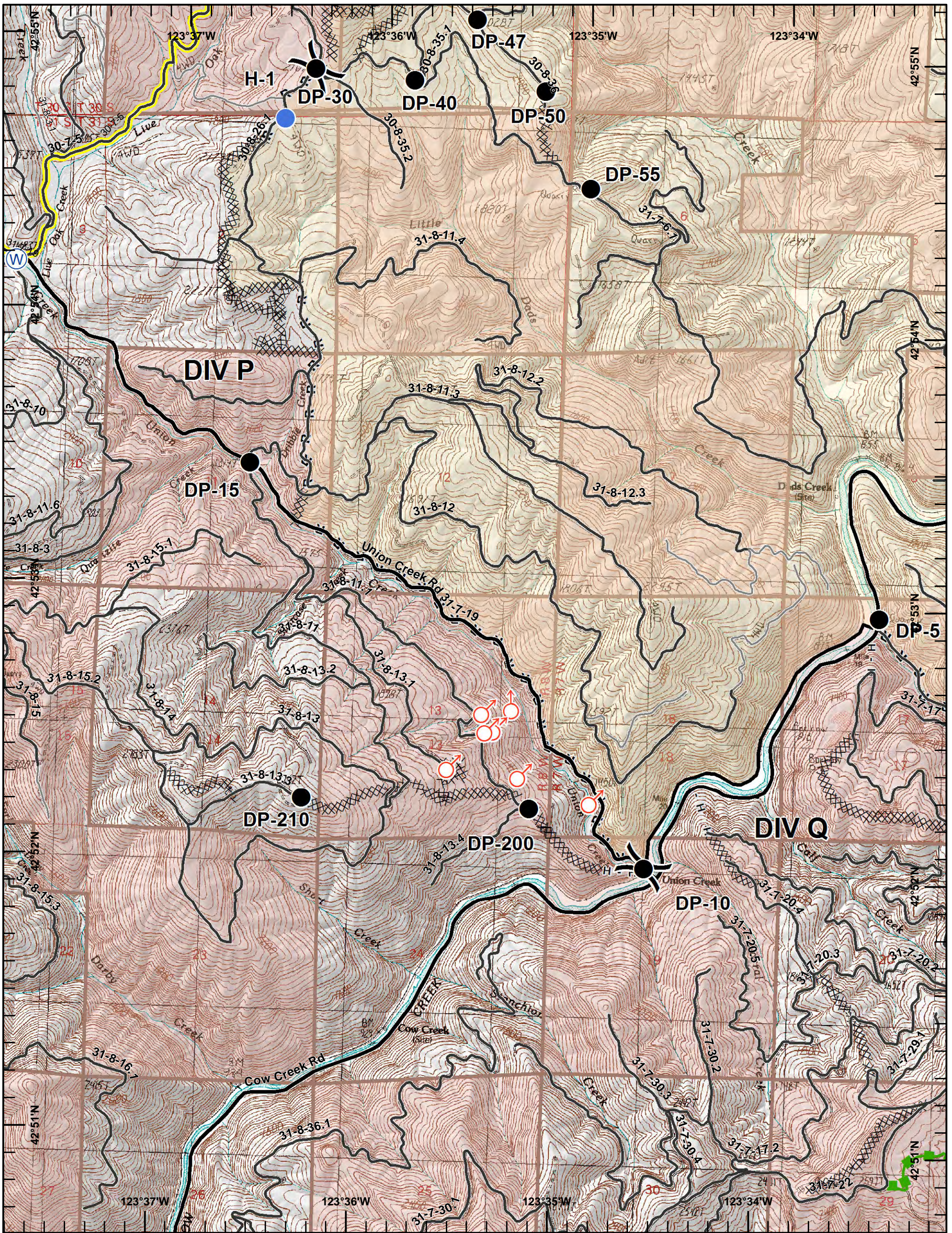
**HORSE PRAIRIE
OR733S-114-18
September 8, 2017
Day Shift
NAD 83**

16,436 ac

**Incident Action
Plan Map**



ODF GIS, Team 3
September 07, 2017
2203 Hours



Legend

- XXXXX Completed Dozer Line
- Completed Line
- H - H Hand Line
- R - R Road as Completed Line
- █ Escape Route
- Drop Point
- Helispot
- ♂ Spot Fire
- ⊙ Water Source
- █ Travel Route

**S West
Page 3**

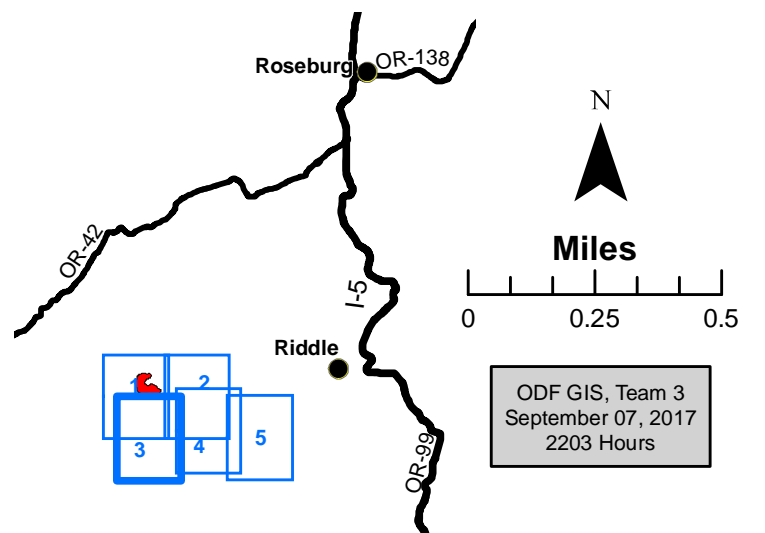
Page 3 of 5



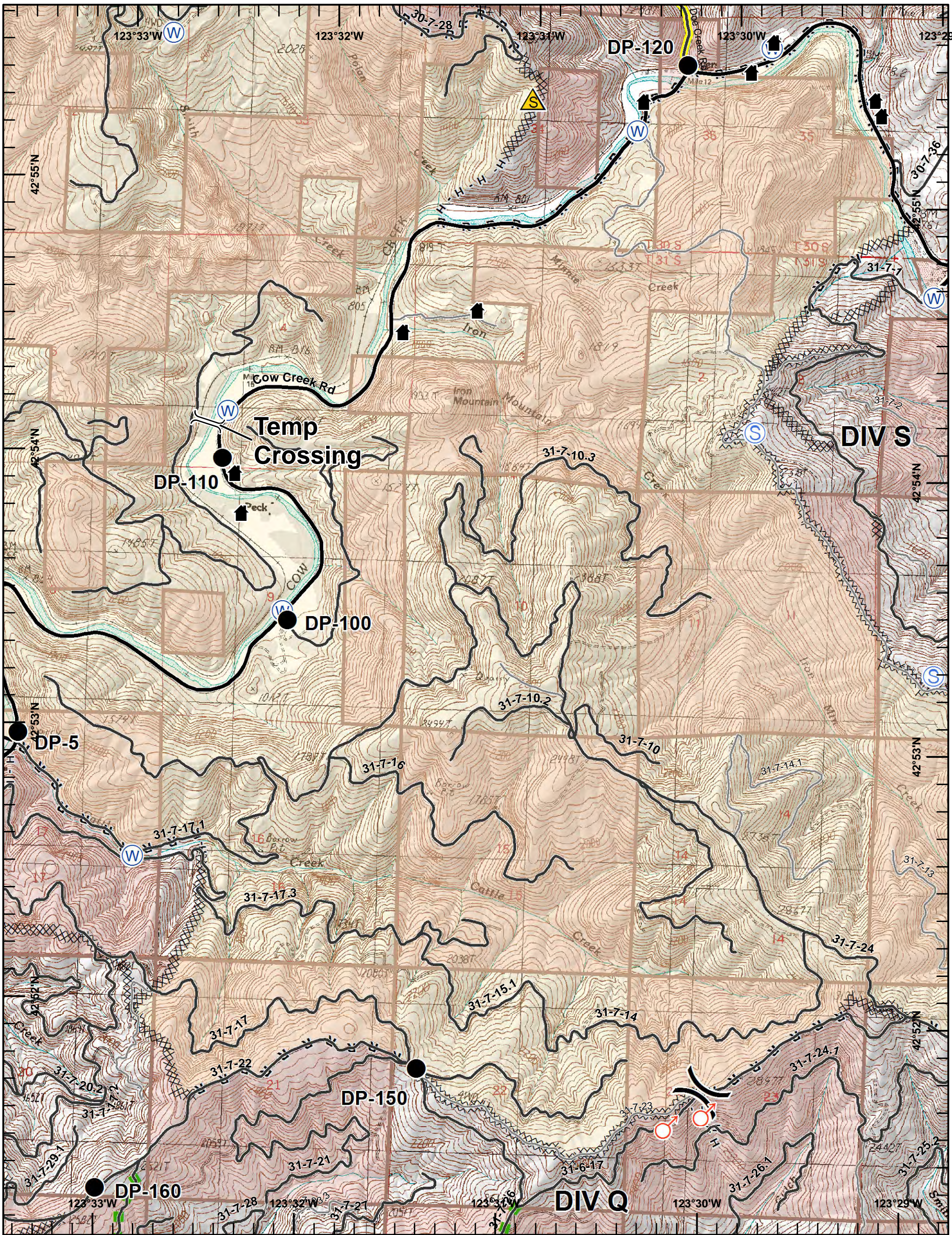
**HORSE PRAIRIE
OR733S-114-18
September 8, 2017
Day Shift
NAD 83**

16,436 ac

**Incident Action
Plan Map**



ODF GIS, Team 3
September 07, 2017
2203 Hours



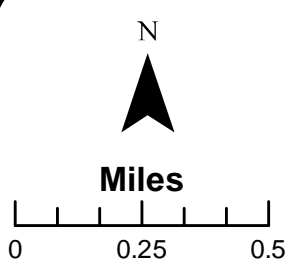
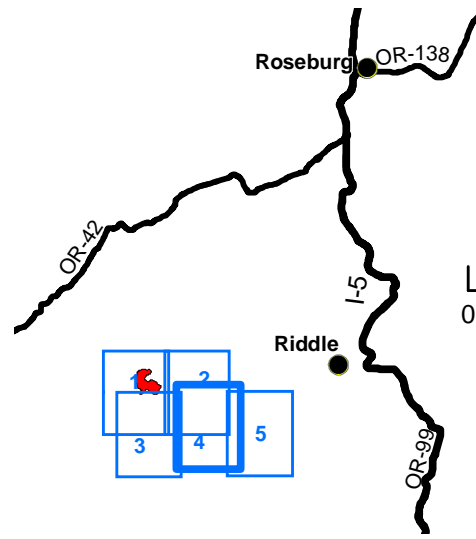
- Legend**
- XXXXX Completed Dozer Line
 - Completed Line
 - H - H Hand Line
 - R - R Road as Completed Line
 - Escape Route
 - Drop Point
 - WX Mobile Weather Unit
 - ▲ Safety Zone
 - ♂ Spot Fire

**South
Page 4**

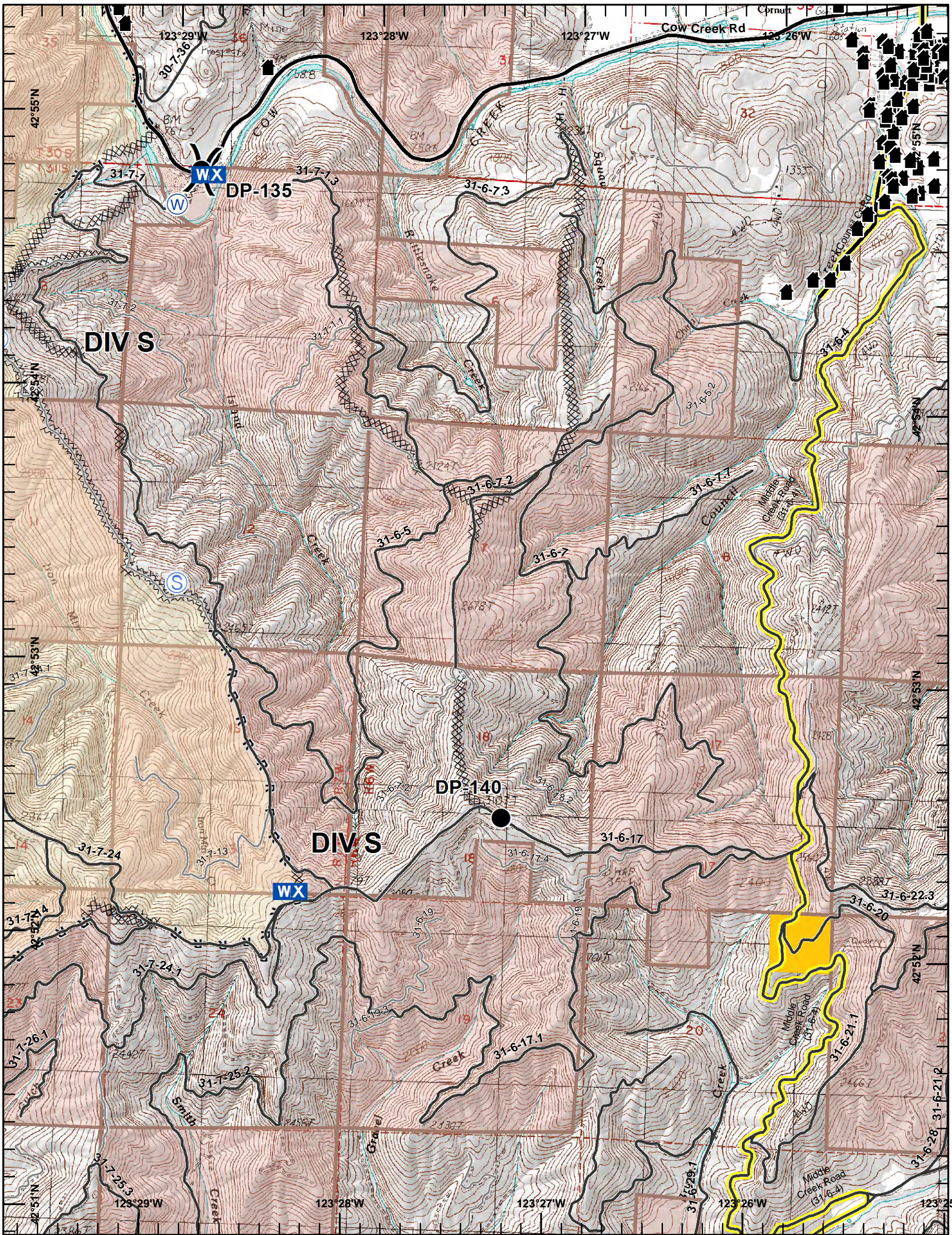
Page 4 of 5



HORSE PRAIRIE
OR733S-114-18
September 8, 2017
Day Shift
NAD 83
16,436 ac
Incident Action
Plan Map



ODF GIS, Team 3
 September 07, 2017
 2204 Hours



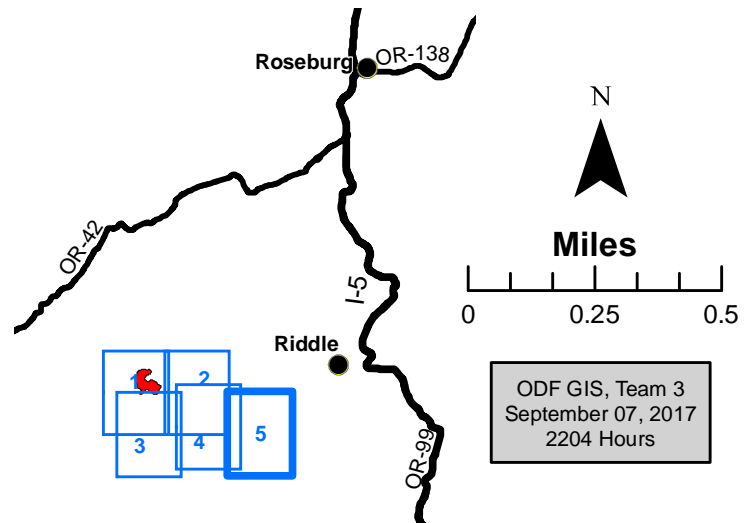
- Legend**
- XXXXX Completed Dozer Line
 - H - H Hand Line
 - R - R Road as Completed Line
 - Drop Point
 - WX** Mobile Weather Unit
 - S** Staging Area
 - W** Water Source
 - Yellow line Travel Route

S East Page 5

Page 5 of 5



HORSE PRAIRIE
OR733S-114-18
September 8, 2017
Day Shift
NAD 83
16,436 ac
Incident Action
Plan Map



ODF GIS, Team 3
 September 07, 2017
 2204 Hours