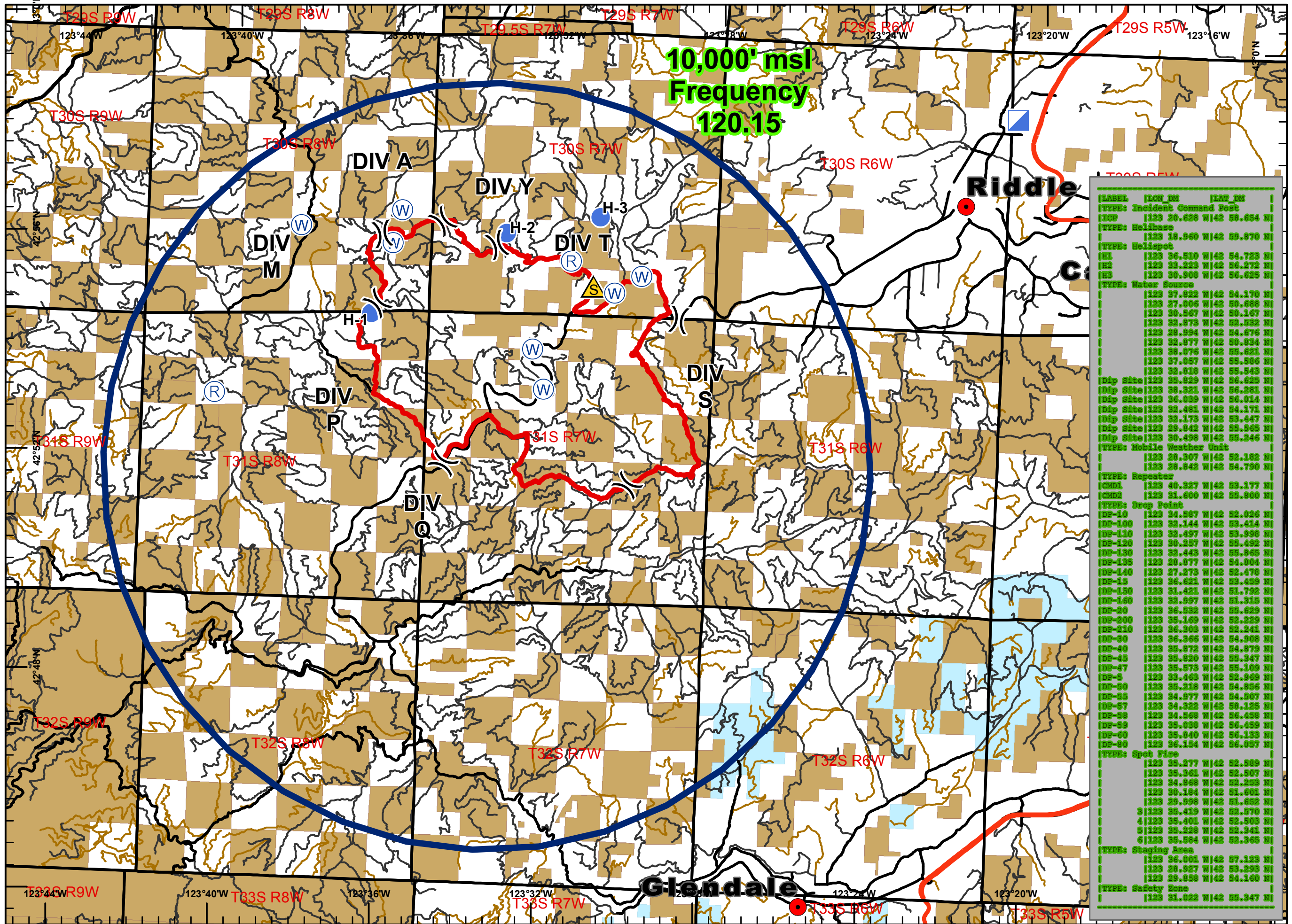


HORSE PRAIRIE
OR733S-11418
 Sept 8, 2017
 Day Shift
 Approx 16,436 ac

TFR MAP

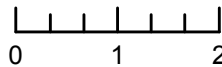


Legend

- Helispot
- ▢ Incident Command Post
- R Repeater
- S Safety Zone
- W Dip Site
- BLM Ownership
- Oregon Dept of Forestry (BOF)



Miles



ODF GIS, Team 3
 September 07, 2017
 2223 Hours

Label	Lon (M)	Lat (M)

[TYPE: Incident Command Post		
[ICP: 20.628 W 42 56.654 N]		
[TYPE: Helibase		
[123 18.960 W 42 59.870 N]		
[TYPE: Helispot		
[H1 [123 36.510 W 42 54.723 N]		
[H2 [123 33.223 W 42 56.272 N]		
[H3 [123 30.908 W 42 56.625 N]		
[TYPE: Water Source		
[123 37.822 W 42 54.170 N]		
[123 27.006 W 42 50.688 N]		
[123 30.567 W 42 50.167 N]		
[123 32.873 W 42 52.532 N]		
[123 28.994 W 42 54.676 N]		
[123 32.677 W 42 50.834 N]		
[123 38.076 W 42 55.621 N]		
[123 37.057 W 42 55.586 N]		
[123 32.618 W 42 55.543 N]		
[Dip Site][123 35.829 W 42 56.625 N]		
[Dip Site][123 38.321 W 42 56.281 N]		
[Dip Site][123 36.039 W 42 56.014 N]		
[Dip Site][123 32.461 W 42 54.171 N]		
[Dip Site][123 32.173 W 42 55.447 N]		
[Dip Site][123 29.842 W 42 55.565 N]		
[Dip Site][123 30.498 W 42 55.246 N]		
[TYPE: Mobile Weather Unit		
[123 28.307 W 42 52.182 N]		
[123 28.842 W 42 54.790 N]		
[TYPE: Repeater		
[CMD1 [123 40.327 W 42 55.177 N]		
[CMD2 [123 31.600 W 42 55.800 N]		
[TYPE: Drop Point		
[DP-10 [123 34.587 W 42 52.026 N]		
[DP-100 [123 32.144 W 42 59.414 N]		
[DP-110 [123 32.497 W 42 59.988 N]		
[DP-120 [123 30.257 W 42 55.492 N]		
[DP-130 [123 32.443 W 42 55.865 N]		
[DP-135 [123 28.677 W 42 54.804 N]		
[DP-140 [123 27.273 W 42 52.478 N]		
[DP-15 [123 36.621 W 42 59.459 N]		
[DP-150 [123 31.421 W 42 53.752 N]		
[DP-160 [123 32.997 W 42 51.315 N]		
[DP-20 [123 36.532 W 42 55.629 N]		
[DP-200 [123 35.169 W 42 52.229 N]		
[DP-210 [123 36.309 W 42 52.241 N]		
[DP-30 [123 36.366 W 42 54.908 N]		
[DP-40 [123 35.672 W 42 54.879 N]		
[DP-45 [123 35.820 W 42 55.347 N]		
[DP-47 [123 35.573 W 42 55.109 N]		
[DP-5 [123 33.463 W 42 52.969 N]		
[DP-50 [123 35.218 W 42 54.856 N]		
[DP-55 [123 34.977 W 42 54.507 N]		
[DP-57 [123 34.322 W 42 56.125 N]		
[DP-58 [123 34.568 W 42 56.458 N]		
[DP-59 [123 35.038 W 42 56.459 N]		
[DP-60 [123 35.840 W 42 56.133 N]		
[DP-80 [123 36.184 W 42 56.057 N]		
[TYPE: Spot Fire		
[123 35.277 W 42 52.589 N]		
[123 35.361 W 42 52.507 N]		
[123 34.868 W 42 52.258 N]		
[123 30.184 W 42 51.601 N]		
[123 29.998 W 42 51.652 N]		
3 123 35.419 W 42 52.570 N]		
4 123 35.401 W 42 52.503 N]		
5 123 35.228 W 42 52.341 N]		
6 123 35.584 W 42 52.365 N]		
[TYPE: Staging Area		
[123 36.001 W 42 57.123 N]		
[123 28.927 W 42 59.293 N]		
[123 29.858 W 42 54.160 N]		
[TYPE: Safety Zone		
[123 31.022 W 42 55.347 N]		
