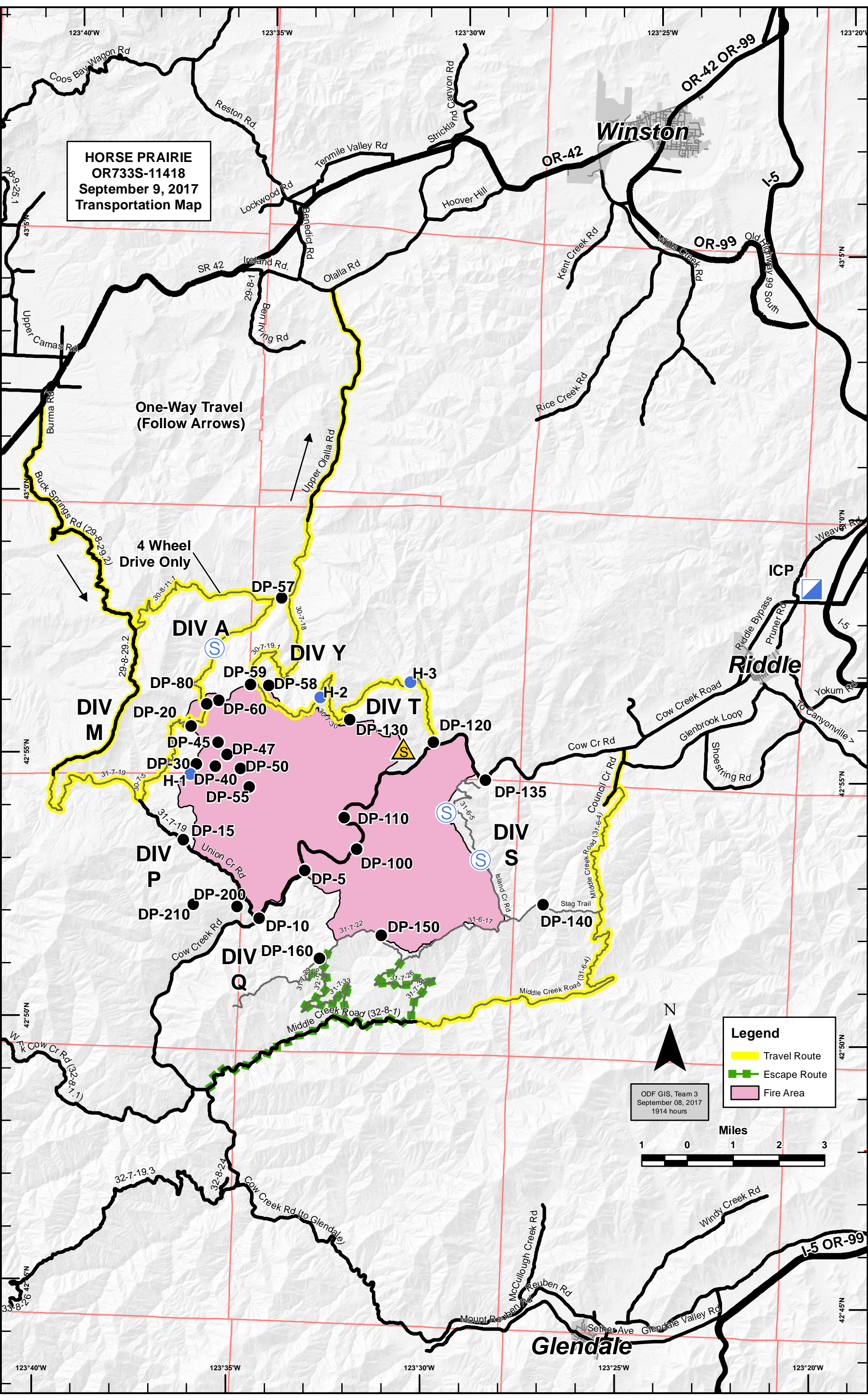


**HORSE PRAIRIE  
OR733S-11418  
September 9, 2017  
Transportation Map**



One-Way Travel  
(Follow Arrows)

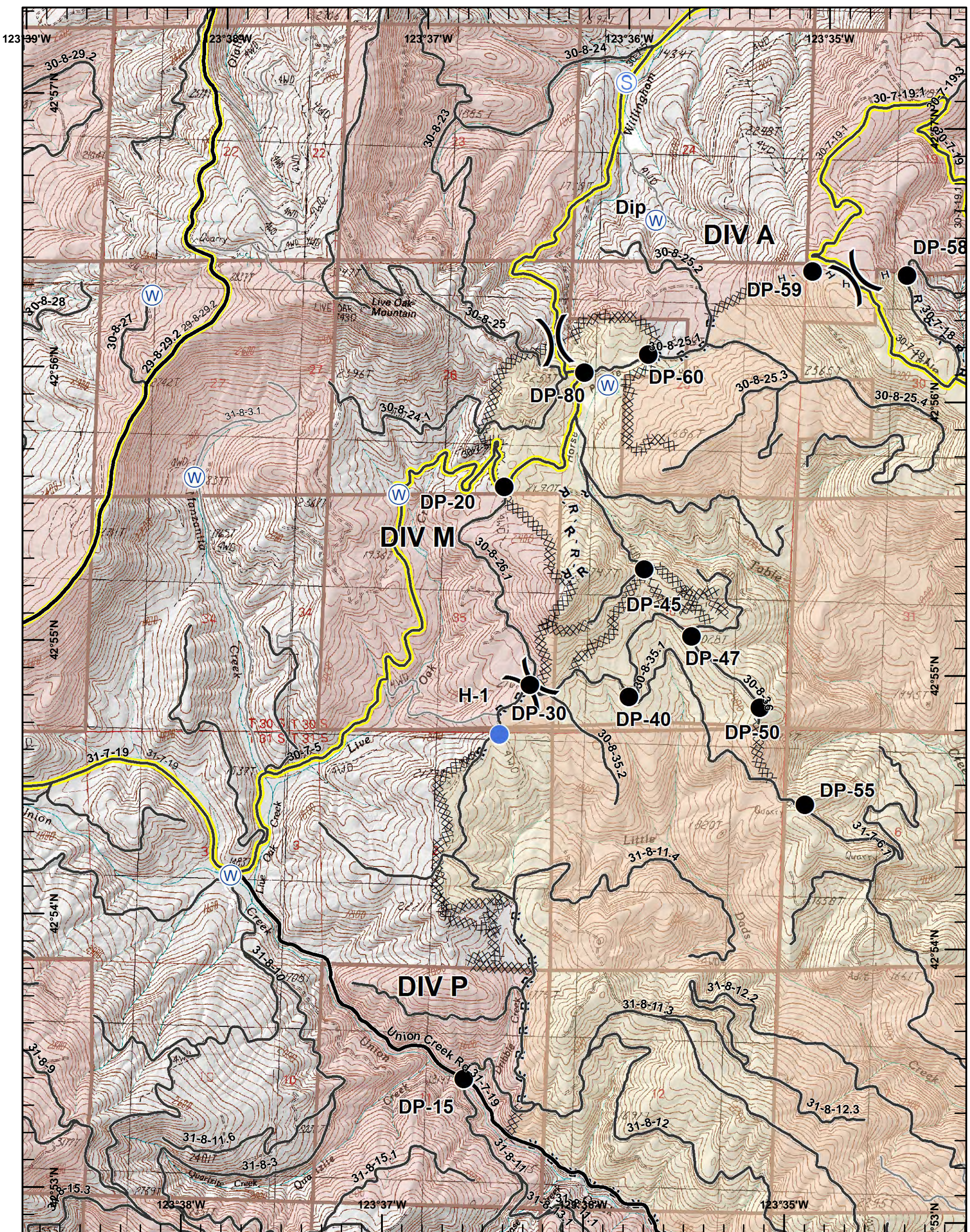
4 Wheel  
Drive Only

**Legend**

- Travel Route
- - - Escape Route
- Fire Area

ODF GIS, Team 3  
September 08, 2017  
1914 hours





**Legend**

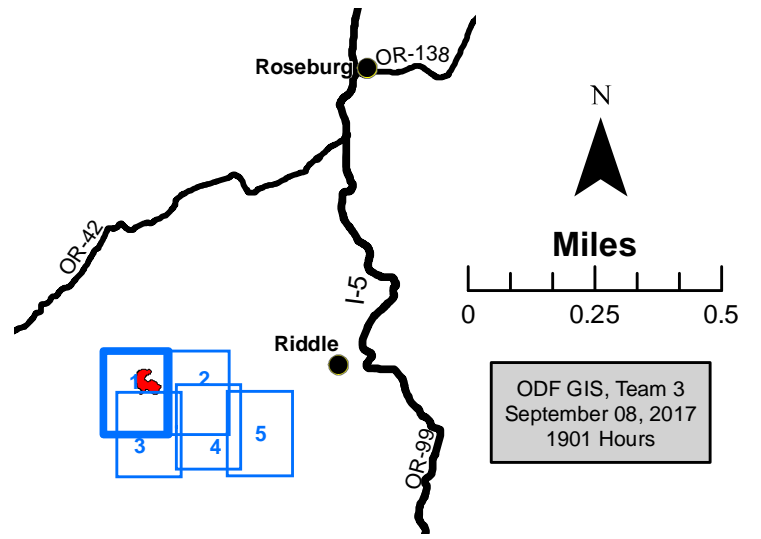
- XXXXX Completed Dozer Line
- H - H Hand Line
- R - R Road as Completed Line
- Drop Point
- Helispot
- Ⓢ Staging Area
- Ⓜ Water Source
- Travel Route

**N West  
Page 1**

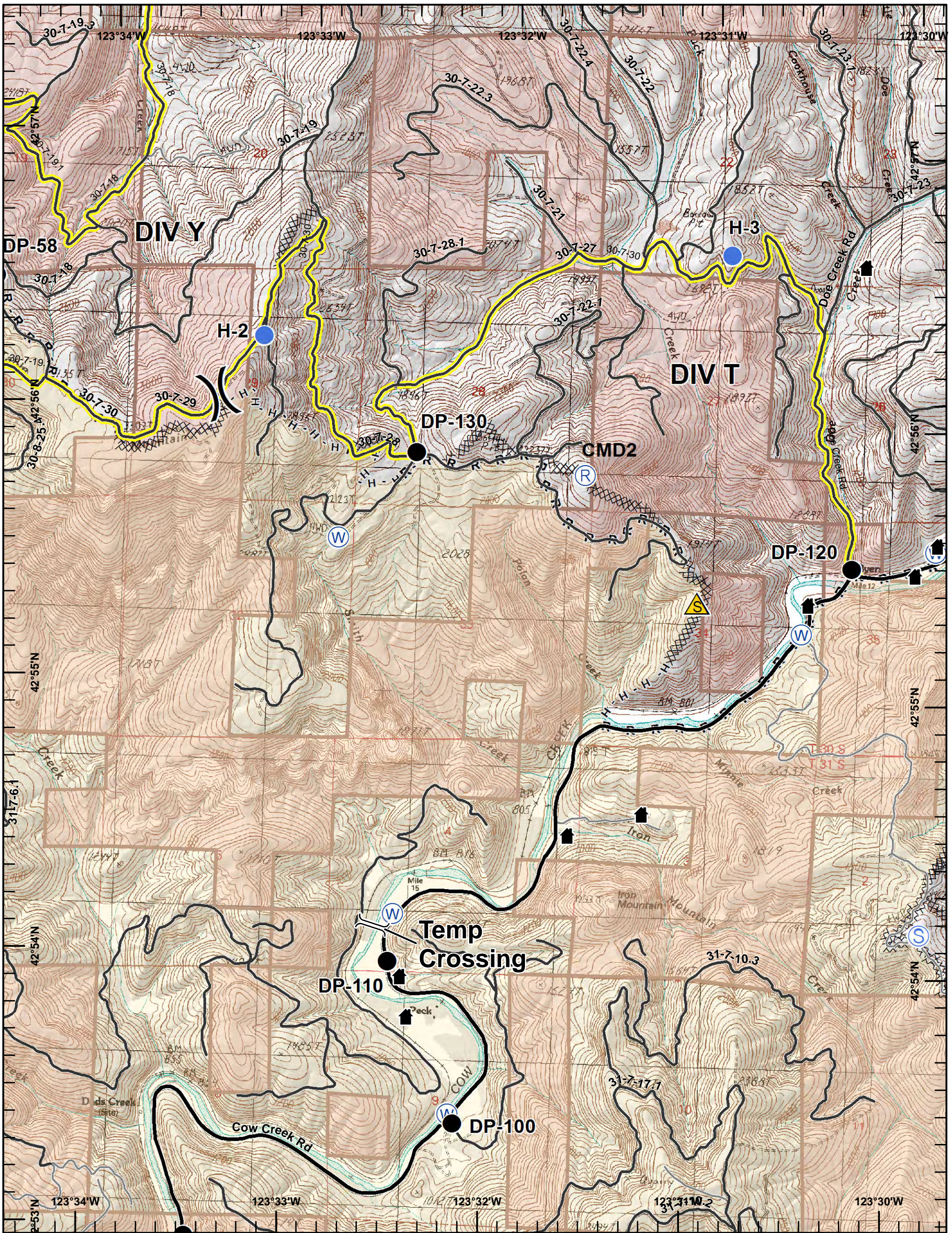
Page 1 of 5



**HORSE PRAIRIE**  
**OR733S-114-18**  
**September 9, 2017**  
**Day Shift**  
**NAD 83**  
**16,436 ac**  
**Incident Action**  
**Plan Map**



ODF GIS, Team 3  
 September 08, 2017  
 1901 Hours



**Legend**

- XXXXX Completed Dozer Line
- H - H Hand Line
- R - R Road as Completed Line
- Drop Point
- Helispot
- Ⓡ Repeater
- ⚠ Safety Zone
- Ⓢ Staging Area
- Ⓜ Water Source

**N East  
Page 2**

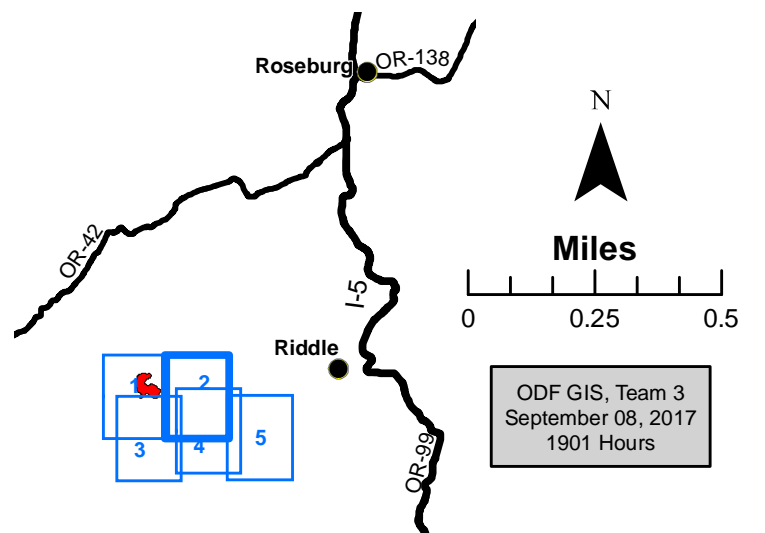
Page 2 of 5



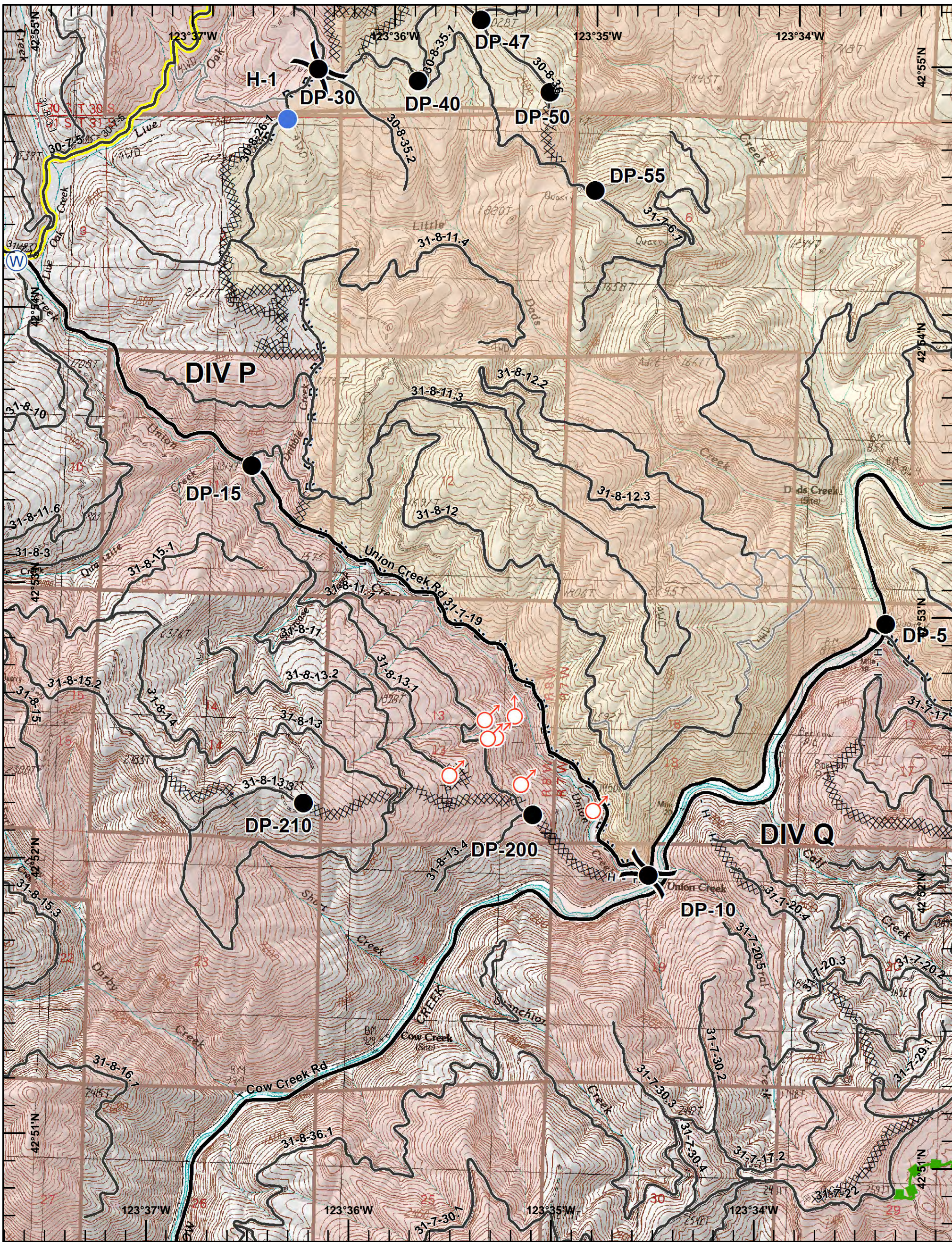
**HORSE PRAIRIE  
OR733S-114-18  
September 9, 2017  
Day Shift  
NAD 83**

16,436 ac

**Incident Action  
Plan Map**



ODF GIS, Team 3  
September 08, 2017  
1901 Hours



**Legend**

- XXXXX Completed Dozer Line
- Completed Line
- H - H Hand Line
- R - R Road as Completed Line
- █ Escape Route
- Drop Point
- Helispot
- ♂ Spot Fire
- ⊙ Water Source
- █ Travel Route

**S West  
Page 3**

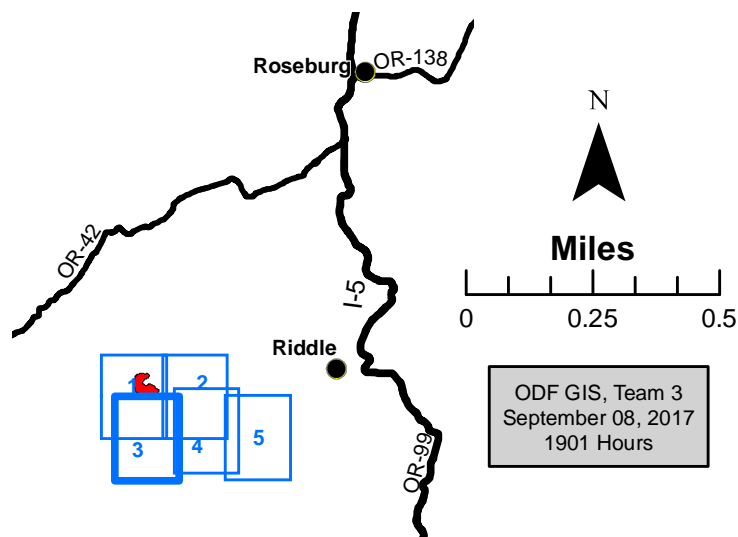
Page 3 of 5



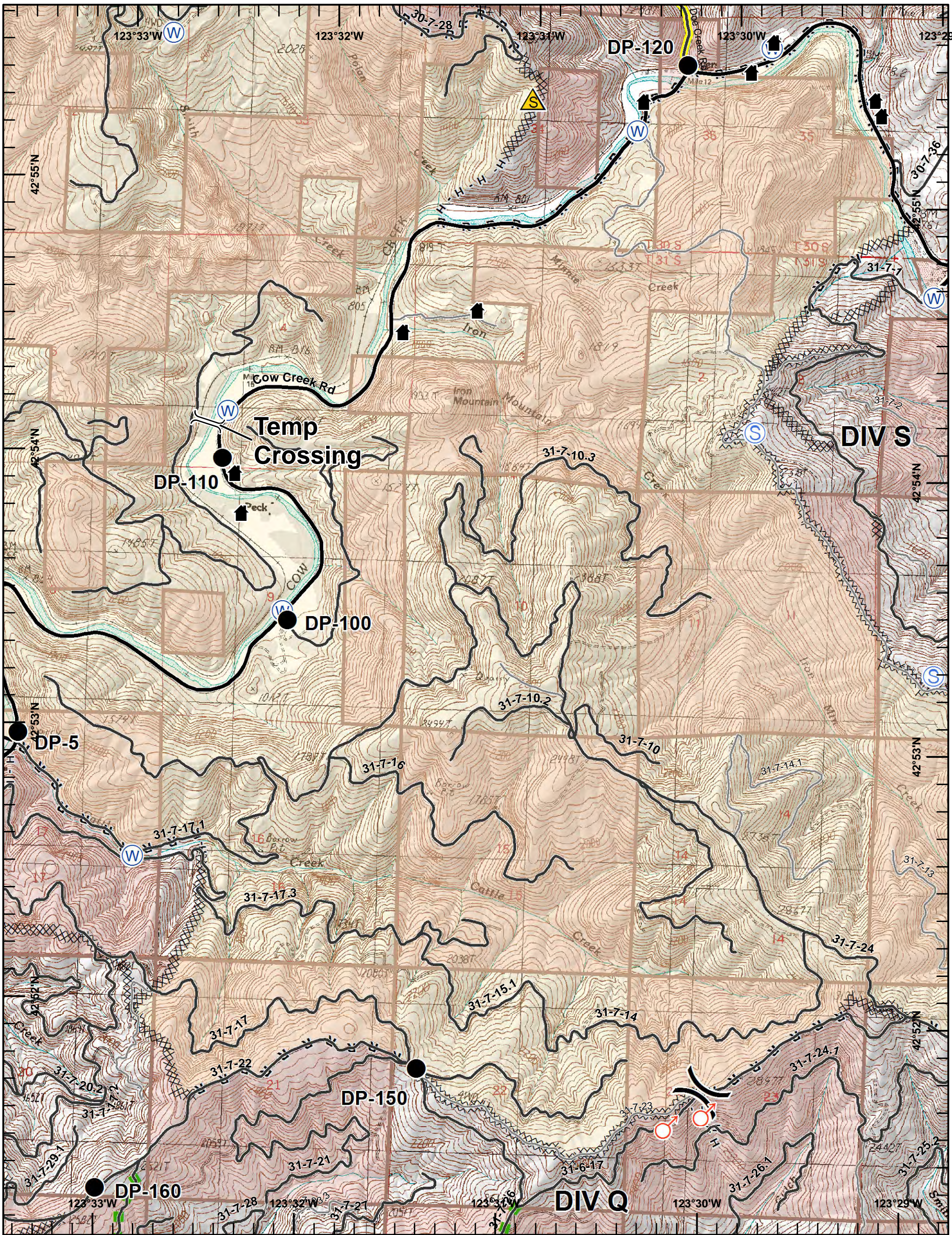
**HORSE PRAIRIE  
OR733S-114-18  
September 9, 2017  
Day Shift  
NAD 83**

**16,436 ac**

**Incident Action  
Plan Map**



ODF GIS, Team 3  
September 08, 2017  
1901 Hours



**Legend**

- XXXXX Completed Dozer Line
- Completed Line
- H - H Hand Line
- R - R Road as Completed Line
- Escape Route
- Drop Point
- WX Mobile Weather Unit
- ▲ Safety Zone
- ♂ Spot Fire

**South  
Page 4**

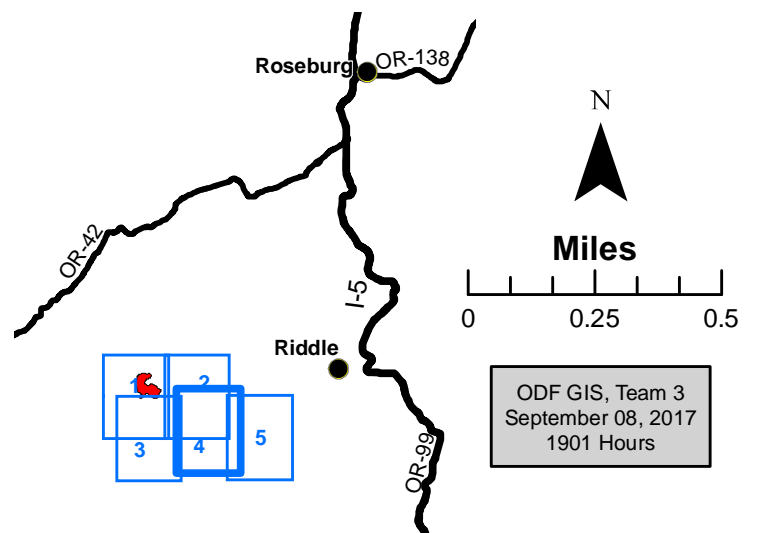
Page 4 of 5



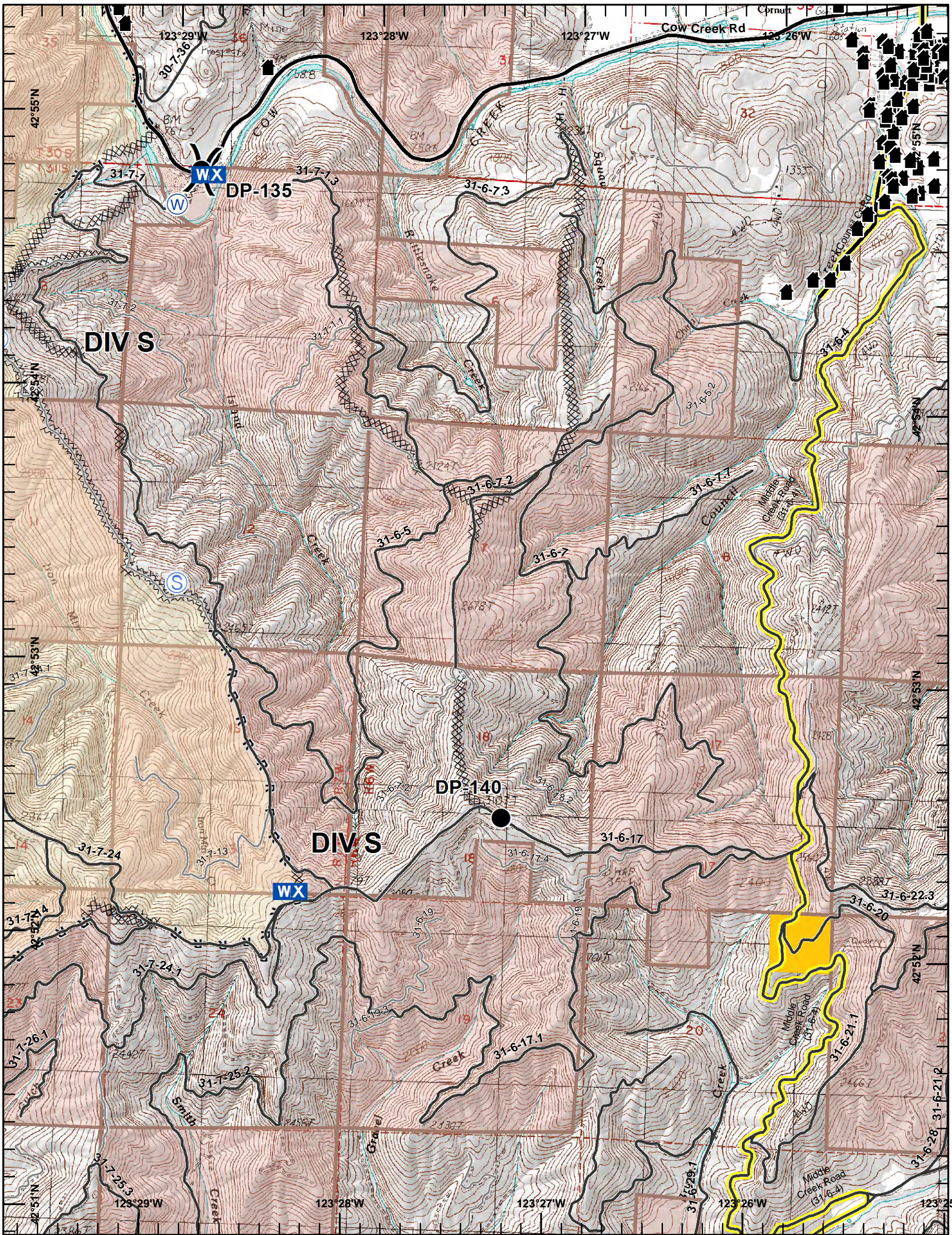
**HORSE PRAIRIE  
OR733S-114-18  
September 9, 2017  
Day Shift  
NAD 83**

**16,436 ac**

**Incident Action  
Plan Map**



ODF GIS, Team 3  
September 08, 2017  
1901 Hours



**Legend**

- XXXXX Completed Dozer Line
- H - H Hand Line
- R - R Road as Completed Line
- Drop Point
- WX** Mobile Weather Unit
- S** Staging Area
- W** Water Source
- Yellow line Travel Route

**S East  
Page 5**

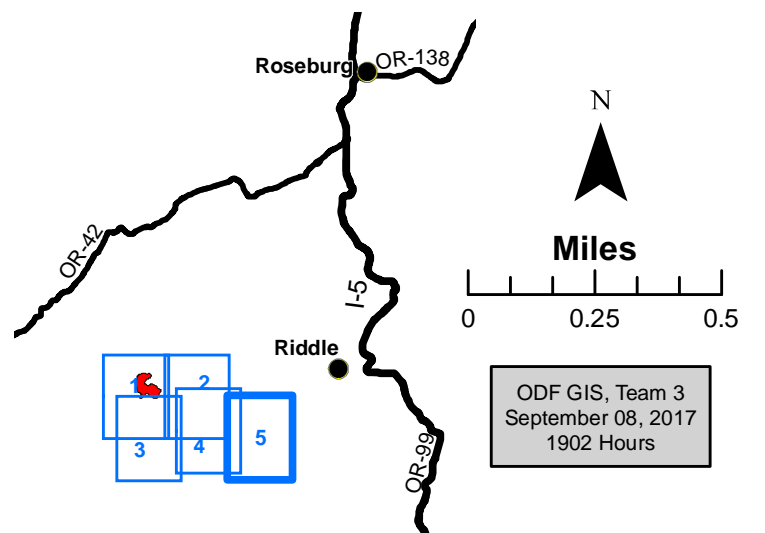
Page 5 of 5



**HORSE PRAIRIE  
OR733S-114-18  
September 9, 2017  
Day Shift  
NAD 83**

**16,436 ac**

**Incident Action  
Plan Map**



ODF GIS, Team 3  
September 08, 2017  
1902 Hours