








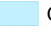
**HORSE PRAIRIE
OR733S-11418**

September 9, 2017

Approx 16,436 ac

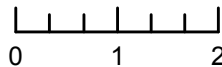
TFR MAP

Legend

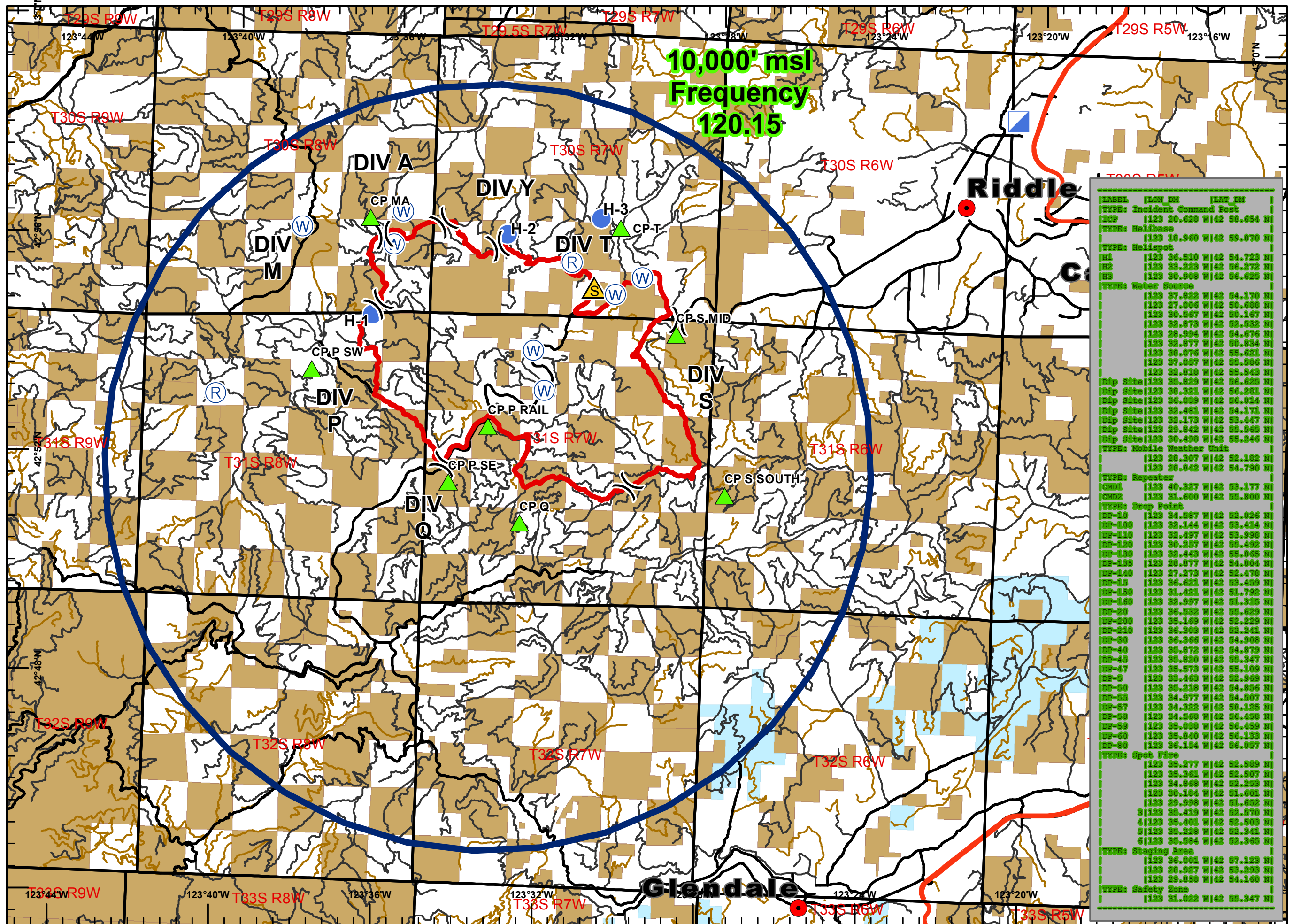
-  Helispot
-  Incident Command Post
-  Repeater
-  Safety Zone
-  Dip Site
-  UAS Checkpoint
-  BLM Ownership
-  Oregon Dept of Forestry (BOF)



Miles



ODF GIS, Team 3
September 08, 2017
2121 Hours



Label	Lon (M)	Lat (M)
ICP: Incident Command Post	123 20.628 W	42 58.654 N
TYPE: Helibase	123 18.960 W	42 59.870 N
TYPE: Helispot	123 36.510 W	42 54.723 N
H1	123 33.223 W	42 56.272 N
H3	123 30.908 W	42 56.625 N
TYPE: Water Source	123 37.822 W	42 54.170 N
	123 27.006 W	42 50.688 N
	123 30.567 W	42 50.167 N
	123 32.873 W	42 52.532 N
	123 28.994 W	42 54.676 N
	123 32.677 W	42 50.834 N
	123 38.076 W	42 55.621 N
	123 37.057 W	42 55.586 N
	123 32.618 W	42 55.543 N
Dip Site	123 35.829 W	42 56.625 N
Dip Site	123 38.321 W	42 56.281 N
Dip Site	123 36.039 W	42 56.014 N
Dip Site	123 32.461 W	42 54.171 N
Dip Site	123 32.173 W	42 55.447 N
Dip Site	123 29.842 W	42 55.565 N
Dip Site	123 30.498 W	42 55.246 N
TYPE: Mobile Weather Unit	123 28.307 W	42 52.182 N
	123 28.842 W	42 54.790 N
TYPE: Repeater	123 40.327 W	42 55.177 N
ICMD1	123 31.600 W	42 55.800 N
TYPE: Drop Point	123 34.587 W	42 52.026 N
DP-100	123 32.144 W	42 55.414 N
DP-110	123 32.497 W	42 55.988 N
DP-120	123 30.257 W	42 55.492 N
DP-130	123 32.443 W	42 55.865 N
DP-135	123 28.677 W	42 54.804 N
DP-140	123 27.273 W	42 52.478 N
DP-15	123 36.621 W	42 53.459 N
DP-150	123 31.421 W	42 53.792 N
DP-160	123 32.997 W	42 51.315 N
DP-20	123 36.532 W	42 55.629 N
DP-200	123 35.169 W	42 52.229 N
DP-210	123 36.303 W	42 52.241 N
DP-30	123 36.366 W	42 54.908 N
DP-40	123 35.672 W	42 54.879 N
DP-45	123 35.820 W	42 55.347 N
DP-47	123 35.573 W	42 55.109 N
DP-5	123 33.463 W	42 52.969 N
DP-50	123 35.218 W	42 54.856 N
DP-55	123 34.977 W	42 54.507 N
DP-57	123 34.322 W	42 56.125 N
DP-58	123 34.568 W	42 56.458 N
DP-59	123 35.038 W	42 56.459 N
DP-60	123 35.840 W	42 56.133 N
DP-80	123 36.184 W	42 56.057 N
TYPE: Spot Fire	123 35.277 W	42 52.589 N
	123 35.361 W	42 52.507 N
	123 34.868 W	42 52.258 N
	123 30.184 W	42 51.601 N
	123 29.998 W	42 51.652 N
3	123 35.419 W	42 52.570 N
4	123 35.401 W	42 52.503 N
5	123 35.228 W	42 52.341 N
6	123 35.584 W	42 52.365 N
TYPE: Staging Area	123 36.001 W	42 57.123 N
	123 28.927 W	42 59.293 N
	123 29.858 W	42 54.160 N
TYPE: Safety Zone	123 31.022 W	42 55.347 N