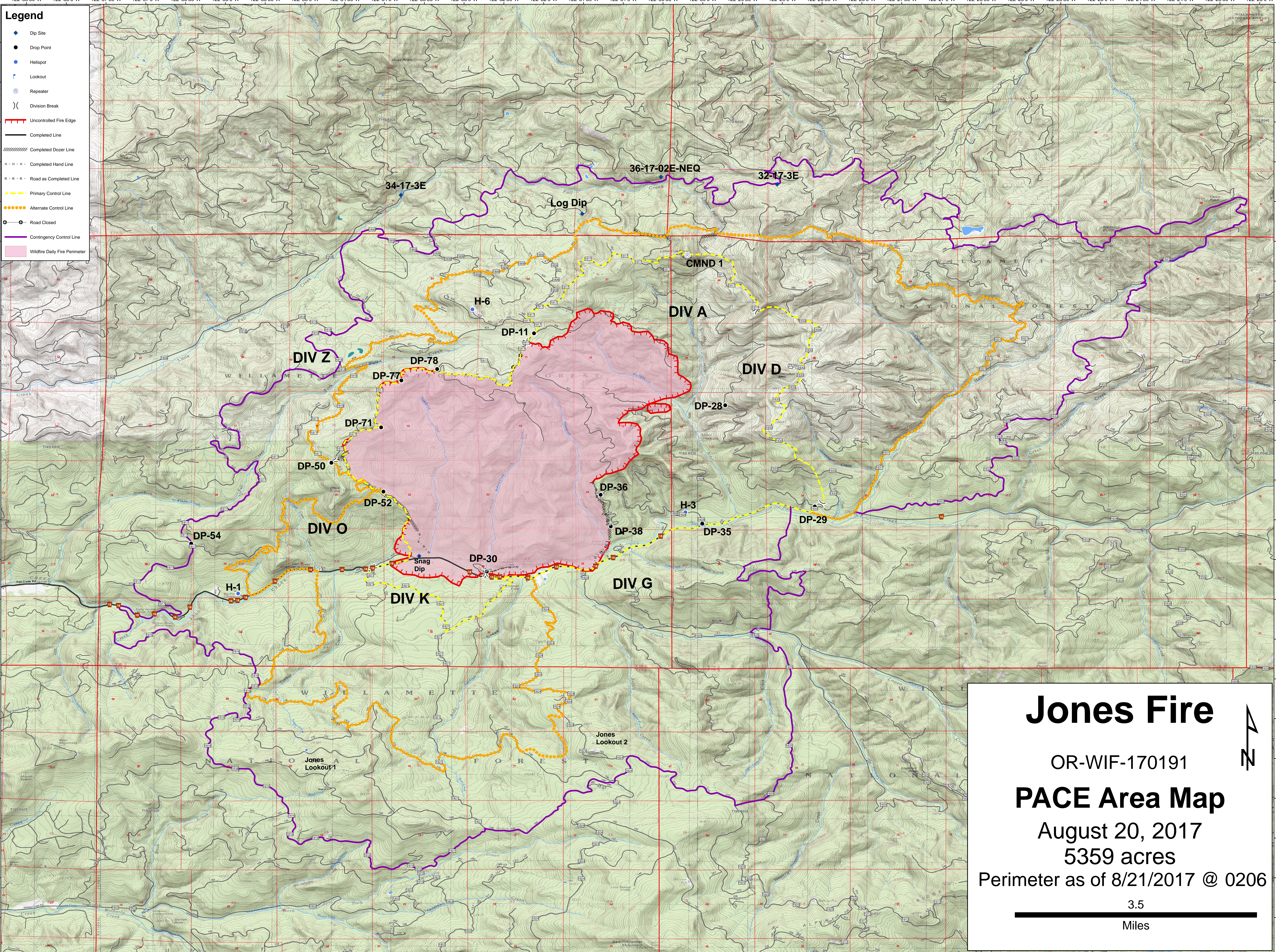


- Legend**
- ◆ Dip Site
  - Drop Point
  - Helispot
  - ⚡ Lookout
  - Ⓜ Repeater
  - ) ( Division Break
  - Uncontrolled Fire Edge
  - Completed Line
  - ⋯ Completed Dozer Line
  - - - Completed Hand Line
  - - - Road as Completed Line
  - Primary Control Line
  - Alternate Control Line
  - ⊖ Road Closed
  - Contingency Control Line
  - Wildfire Daily Fire Perimeter



# Jones Fire

OR-WIF-170191

## PACE Area Map

August 20, 2017

5359 acres

Perimeter as of 8/21/2017 @ 0206

3.5  
Miles

122°38'30"W 122°38'0"W 122°37'30"W 122°37'0"W 122°36'30"W 122°36'0"W 122°35'30"W 122°35'0"W 122°34'30"W 122°34'0"W 122°33'30"W 122°33'0"W 122°32'30"W 122°32'0"W 122°31'30"W 122°31'0"W 122°30'30"W 122°30'0"W 122°29'30"W 122°29'0"W 122°28'30"W 122°28'0"W 122°27'30"W 122°27'0"W 122°26'30"W 122°26'0"W 122°25'30"W 122°25'0"W 122°24'30"W 122°24'0"W 122°23'30"W 122°23'0"W