

122°45'30"W 122°45'0"W 122°44'30"W 122°44'0"W 122°43'30"W 122°43'0"W 122°42'30"W 122°42'0"W 122°41'30"W 122°41'0"W 122°40'30"W 122°40'0"W 122°39'30"W 122°39'0"W 122°38'30"W 122°38'0"W 122°37'30"W 122°37'0"W 122°36'30"W 122°36'0"W 122°35'30"W 122°35'0"W 122°34'30"W 122°34'0"W 122°33'30"W 122°33'0"W 122°32'30"W 122°32'0"W 122°31'30"W 122°31'0"W 122°30'30"W 122°30'0"W 122°29'30"W 122°29'0"W 122°28'30"W 122°28'0"W 122°27'30"W

Jones Fire

OR-WIF-170191

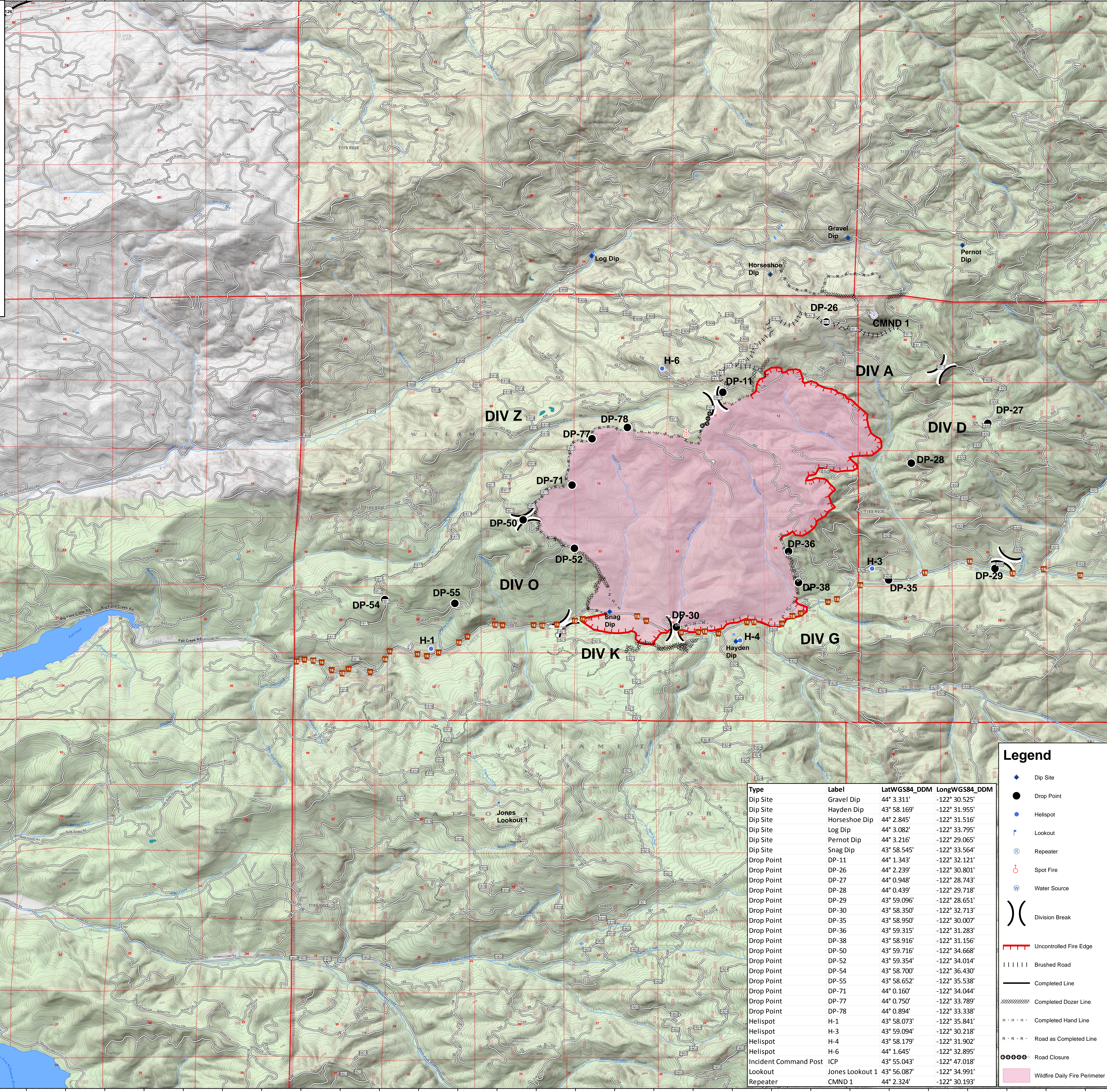
Communication Map

August 22, 2017

5462 acres

Perimeter as of 8/21/2017 @ 2154

4 Miles



Tuesday Weather

RH 30

Temp 84 Deg

W Wind 5 mph

Type	Label	LatWGS84_DDM	LongWGS84_DDM
Dip Site	Gravel Dip	44° 3.311'	-122° 30.525'
Dip Site	Hayden Dip	43° 58.169'	-122° 31.955'
Dip Site	Horseshoe Dip	44° 2.845'	-122° 31.516'
Dip Site	Log Dip	44° 3.082'	-122° 33.795'
Dip Site	Pernot Dip	44° 3.216'	-122° 29.065'
Dip Site	Snag Dip	43° 58.545'	-122° 33.564'
Drop Point	DP-11	44° 1.343'	-122° 32.121'
Drop Point	DP-26	44° 2.239'	-122° 30.801'
Drop Point	DP-27	44° 0.948'	-122° 28.743'
Drop Point	DP-28	44° 0.439'	-122° 29.718'
Drop Point	DP-29	43° 59.096'	-122° 28.651'
Drop Point	DP-30	43° 58.350'	-122° 32.713'
Drop Point	DP-35	43° 58.950'	-122° 30.007'
Drop Point	DP-36	43° 59.315'	-122° 31.283'
Drop Point	DP-38	43° 58.916'	-122° 31.156'
Drop Point	DP-50	43° 59.716'	-122° 34.668'
Drop Point	DP-52	43° 59.354'	-122° 34.014'
Drop Point	DP-54	43° 58.700'	-122° 36.430'
Drop Point	DP-55	43° 58.652'	-122° 35.538'
Drop Point	DP-71	44° 0.160'	-122° 34.044'
Drop Point	DP-77	44° 0.750'	-122° 33.789'
Drop Point	DP-78	44° 0.894'	-122° 33.338'
Helispot	H-1	43° 58.073'	-122° 35.841'
Helispot	H-3	43° 59.094'	-122° 30.218'
Helispot	H-4	43° 58.179'	-122° 31.902'
Helispot	H-6	44° 1.645'	-122° 32.895'
Incident Command Post	ICP	43° 55.043'	-122° 47.018'
Lookout	Jones Lookout 1	43° 56.087'	-122° 34.991'
Repeater	CMND 1	44° 2.324'	-122° 30.193'

Legend

- Dip Site
- Drop Point
- Helispot
- Lookout
- Repeater
- Spot Fire
- Water Source
- Division Break
- Uncontrolled Fire Edge
- Brushed Road
- Completed Line
- Completed Dozer Line
- Completed Hand Line
- Road as Completed Line
- Road Closure
- Wildfire Daily Fire Perimeter

122°45'30"W 122°45'0"W 122°44'30"W 122°44'0"W 122°43'30"W 122°43'0"W 122°42'30"W 122°42'0"W 122°41'30"W 122°41'0"W 122°40'30"W 122°40'0"W 122°39'30"W 122°39'0"W 122°38'30"W 122°38'0"W 122°37'30"W 122°37'0"W 122°36'30"W 122°36'0"W 122°35'30"W 122°35'0"W 122°34'30"W 122°34'0"W 122°33'30"W 122°33'0"W 122°32'30"W 122°32'0"W 122°31'30"W 122°31'0"W 122°30'30"W 122°30'0"W 122°29'30"W 122°29'0"W 122°28'30"W 122°28'0"W 122°27'30"W