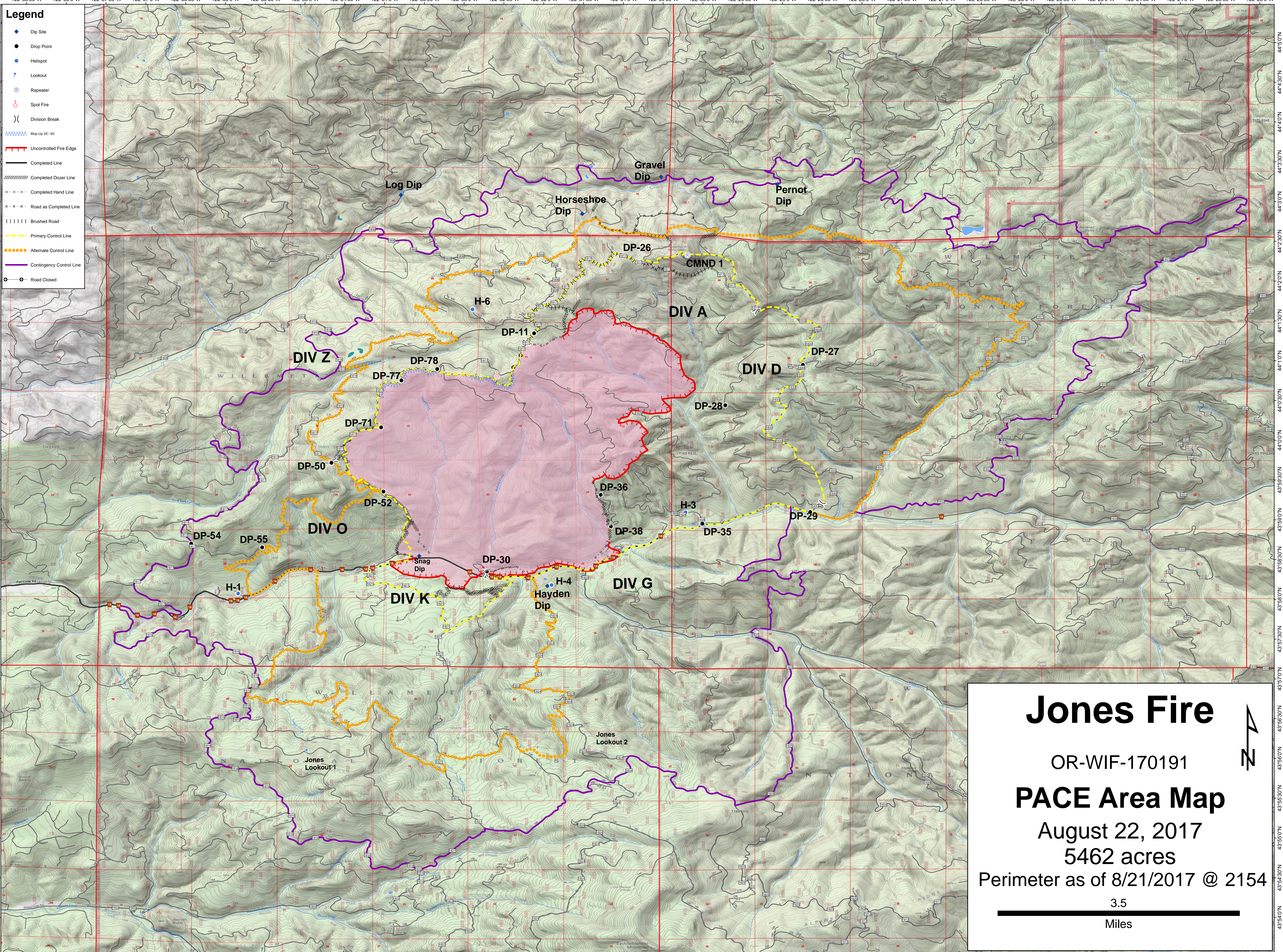


- Legend**
- ◆ Dip Site
  - Drop Point
  - Helispot
  - ⚡ Lookout
  - Ⓡ Repeater
  - ⊙ Spot Fire
  - ) Division Break
  - ~~~~~ Map-Up 25'-50'
  - Uncontrolled Fire Edge
  - Completed Line
  - XXXXXX Completed Dozer Line
  - - - - Completed Hand Line
  - · - · - Road as Completed Line
  - | | | | Brushed Road
  - Primary Control Line
  - · - · - Alternate Control Line
  - Contingency Control Line
  - ⊘ Road Closed



# Jones Fire

OR-WIF-170191

## PACE Area Map

August 22, 2017

5462 acres

Perimeter as of 8/21/2017 @ 2154

3.5
Miles

N  
↑