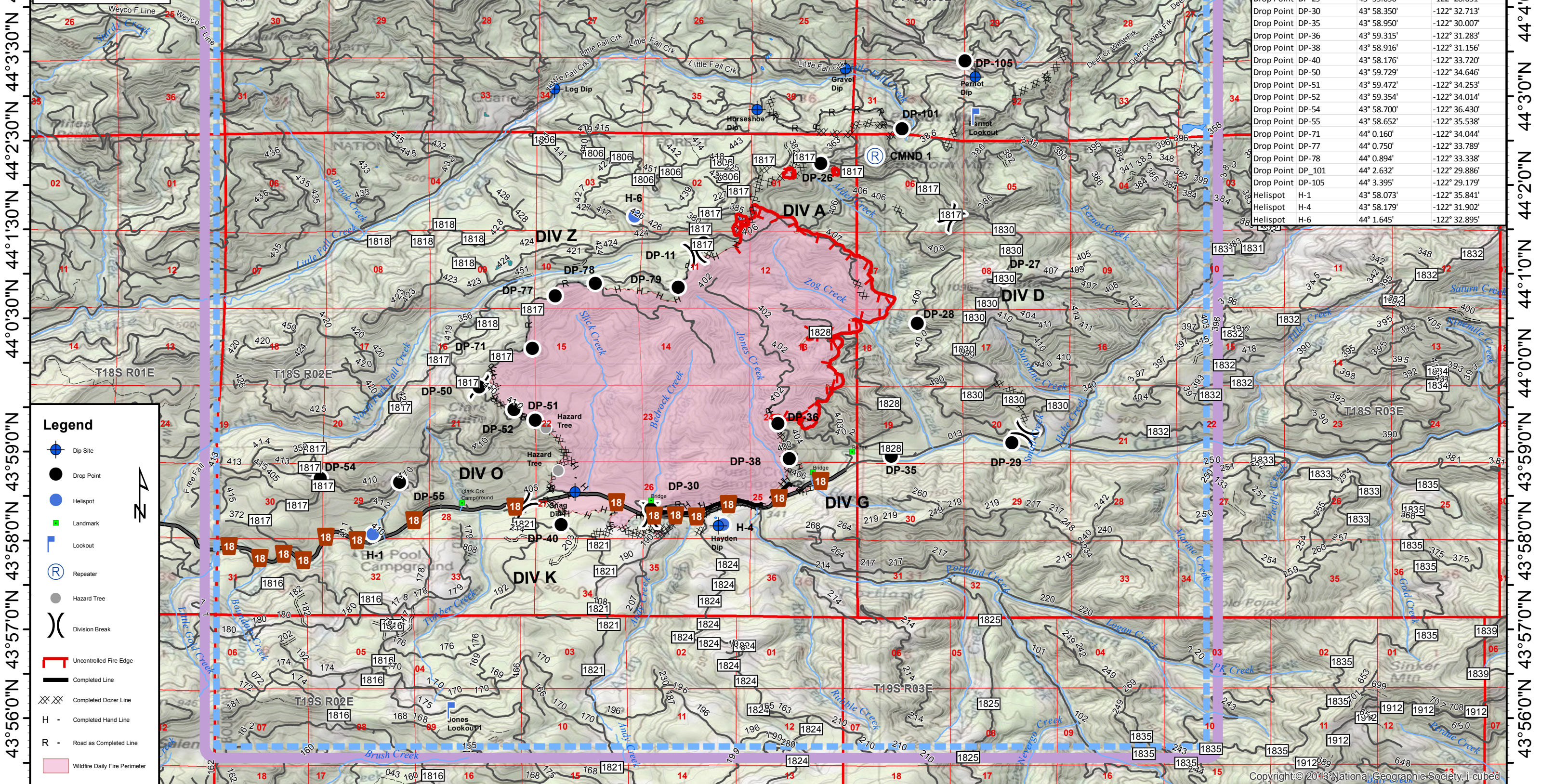


122°38'30"W 122°37'0"W 122°35'30"W 122°34'0"W 122°32'30"W 122°31'0"W 122°29'30"W 122°28'0"W 122°26'30"W 122°25'0"W 122°23'30"W

Jones Fire
 OR-WIF-170191
Air ops Map
 August 26, 2017
 5627 acres
 Perimeter as of 8/25/17 @ 2053



Legend

- Dip Site
- Drop Point
- Helispot
- Landmark
- └─┘ Lookout
- Ⓡ Repeater
- Hazard Tree
- () Division Break
- ┌─┐ Uncontrolled Fire Edge
- Completed Line
- XX XX Completed Dazer Line
- H - Completed Hand Line
- R - Road as Completed Line
- ▭ Wildfire Daily Fire Perimeter

Type	Label	LatWGS84_DDM	LongWGS84_DDM
Dip Site	Gravel Dip	44° 3.311'	-122° 30.525'
Dip Site	Hayden Dip	43° 58.169'	-122° 31.955'
Dip Site	Horseshoe Dip	44° 2.845'	-122° 31.516'
Dip Site	Log Dip	44° 3.082'	-122° 33.795'
Dip Site	Pernot Dip	44° 3.216'	-122° 29.065'
Dip Site	Snag Dip	43° 58.545'	-122° 33.564'
Drop Point	DP-11	44° 1.343'	-122° 32.121'
Drop Point	DP-26	44° 2.239'	-122° 30.801'
Drop Point	DP-27	44° 0.948'	-122° 28.743'
Drop Point	DP-28	44° 0.439'	-122° 29.718'
Drop Point	DP-29	43° 59.096'	-122° 28.651'
Drop Point	DP-30	43° 58.350'	-122° 32.713'
Drop Point	DP-35	43° 58.950'	-122° 30.007'
Drop Point	DP-36	43° 59.315'	-122° 33.283'
Drop Point	DP-38	43° 58.916'	-122° 31.156'
Drop Point	DP-40	43° 58.176'	-122° 33.720'
Drop Point	DP-50	43° 59.729'	-122° 34.646'
Drop Point	DP-51	43° 59.472'	-122° 34.253'
Drop Point	DP-52	43° 59.354'	-122° 34.014'
Drop Point	DP-54	43° 58.700'	-122° 36.430'
Drop Point	DP-55	43° 58.652'	-122° 35.538'
Drop Point	DP-71	44° 0.160'	-122° 34.044'
Drop Point	DP-77	44° 0.750'	-122° 33.789'
Drop Point	DP-78	44° 0.894'	-122° 33.338'
Drop Point	DP-101	44° 2.632'	-122° 29.886'
Drop Point	DP-105	44° 3.395'	-122° 29.179'
Helispot	H-1	43° 58.073'	-122° 35.841'
Helispot	H-4	43° 58.179'	-122° 31.902'
Helispot	H-6	44° 1.645'	-122° 32.895'

44°0'30"N 44°1'30"N 44°2'30"N 44°3'30"N 44°4'30"N 44°5'30"N
 43°56'0"N 43°57'0"N 43°58'0"N 43°59'0"N 44°0'0"N 44°1'0"N 44°2'0"N 44°3'0"N 44°4'0"N 44°5'0"N

122°38'30"W 122°37'0"W 122°35'30"W 122°34'0"W 122°32'30"W 122°31'0"W 122°29'30"W 122°28'0"W 122°26'30"W 122°25'0"W 122°23'30"W