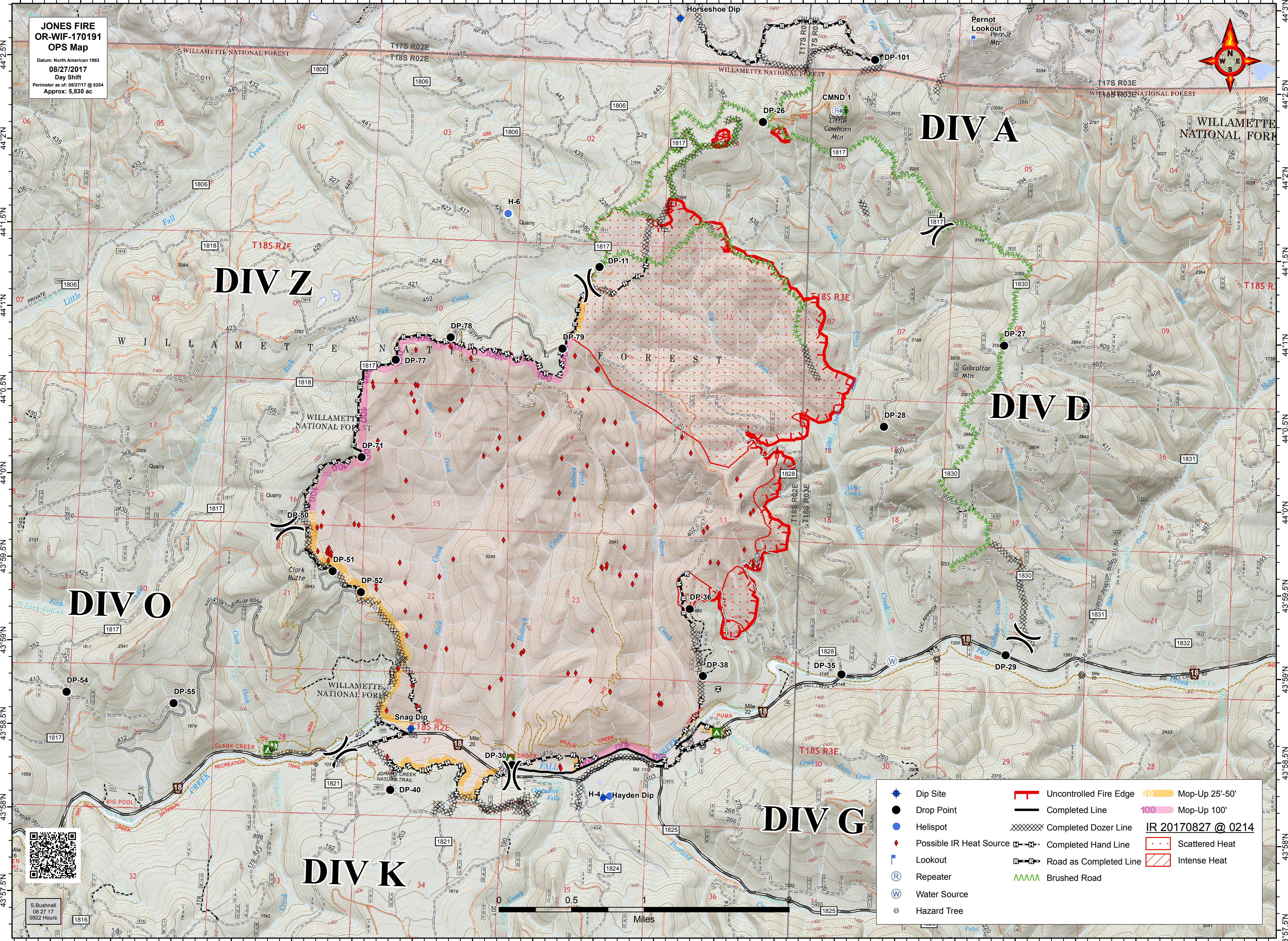
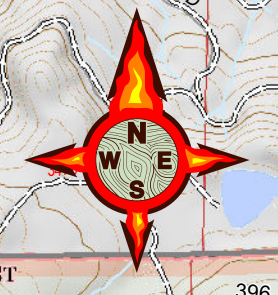


122°37'W 122°36.5'W 122°36'W 122°35.5'W 122°35'W 122°34.5'W 122°34'W 122°33.5'W 122°33'W 122°32.5'W 122°32'W 122°31.5'W 122°31'W 122°30.5'W 122°30'W 122°29.5'W 122°29'W 122°28.5'W 122°28'W 122°27.5'W 122°26'W

**JONES FIRE  
OR-WIF-170191  
OPS Map**  
Datum: North American 1983  
08/27/2017  
Day Shift  
Perimeter as of: 08/27/17 @ 0204  
Approx: 5,830 ac



	Dip Site		Uncontrolled Fire Edge		Mop-Up 25'-50'
	Drop Point		Completed Line		Mop-Up 100'
	Helispot		Completed Dozer Line		Scattered Heat
	Possible IR Heat Source		Completed Hand Line		Intense Heat
	Lookout		Road as Completed Line		
	Repeater		Brushed Road		
	Water Source				
	Hazard Tree				



S. Bushnell  
08 27 17  
0922 Hours

122°36.5'W 122°36'W 122°35.5'W 122°35'W 122°34.5'W 122°34'W 122°33.5'W 122°33'W 122°32.5'W 122°32'W 122°31.5'W 122°31'W 122°30.5'W 122°30'W 122°29.5'W 122°29'W 122°28.5'W 122°28'W 122°27.5'W 122°26'W