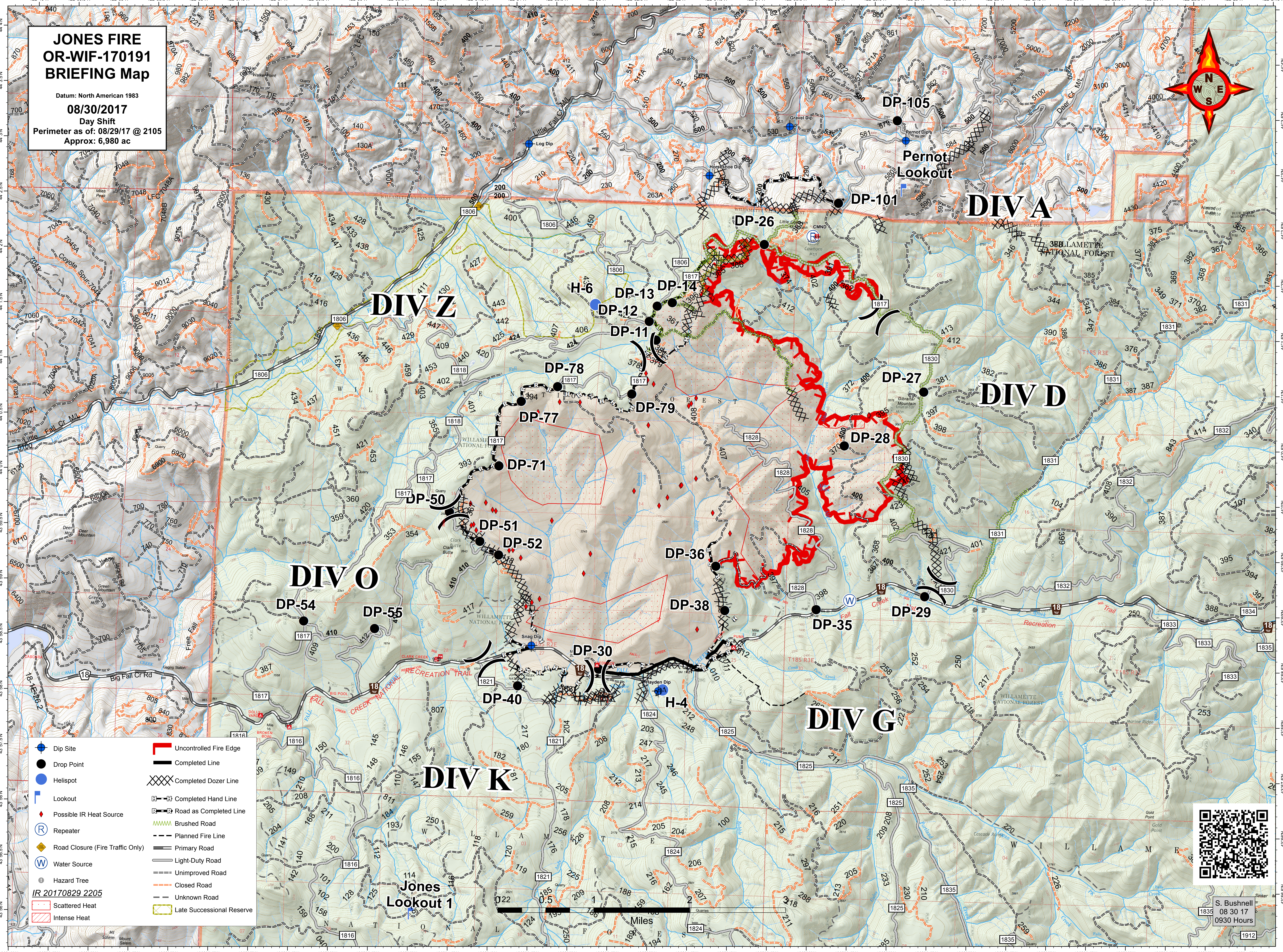


JONES FIRE OR-WIF-170191 BRIEFING Map

Datum: North American 1983
08/30/2017
 Day Shift
 Perimeter as of: 08/29/17 @ 2105
 Approx: 6,980 ac



- | | |
|----------------------------------|---------------------------|
| Dip Site | Uncontrolled Fire Edge |
| Drop Point | Completed Line |
| Helispot | Completed Dozer Line |
| Lookout | Completed Hand Line |
| Possible IR Heat Source | Road as Completed Line |
| Repeater | Brushed Road |
| Road Closure (Fire Traffic Only) | Planned Fire Line |
| Water Source | Primary Road |
| Hazard Tree | Light-Duty Road |
| Scattered Heat | Unimproved Road |
| Intense Heat | Closed Road |
| | Late Successional Reserve |



S. Bushnell
 08 30 17
 0930 Hours

0.5 1 Miles