

# JONES FIRE Public Information Map

08/30/2017  
Approx: 6,980 ac

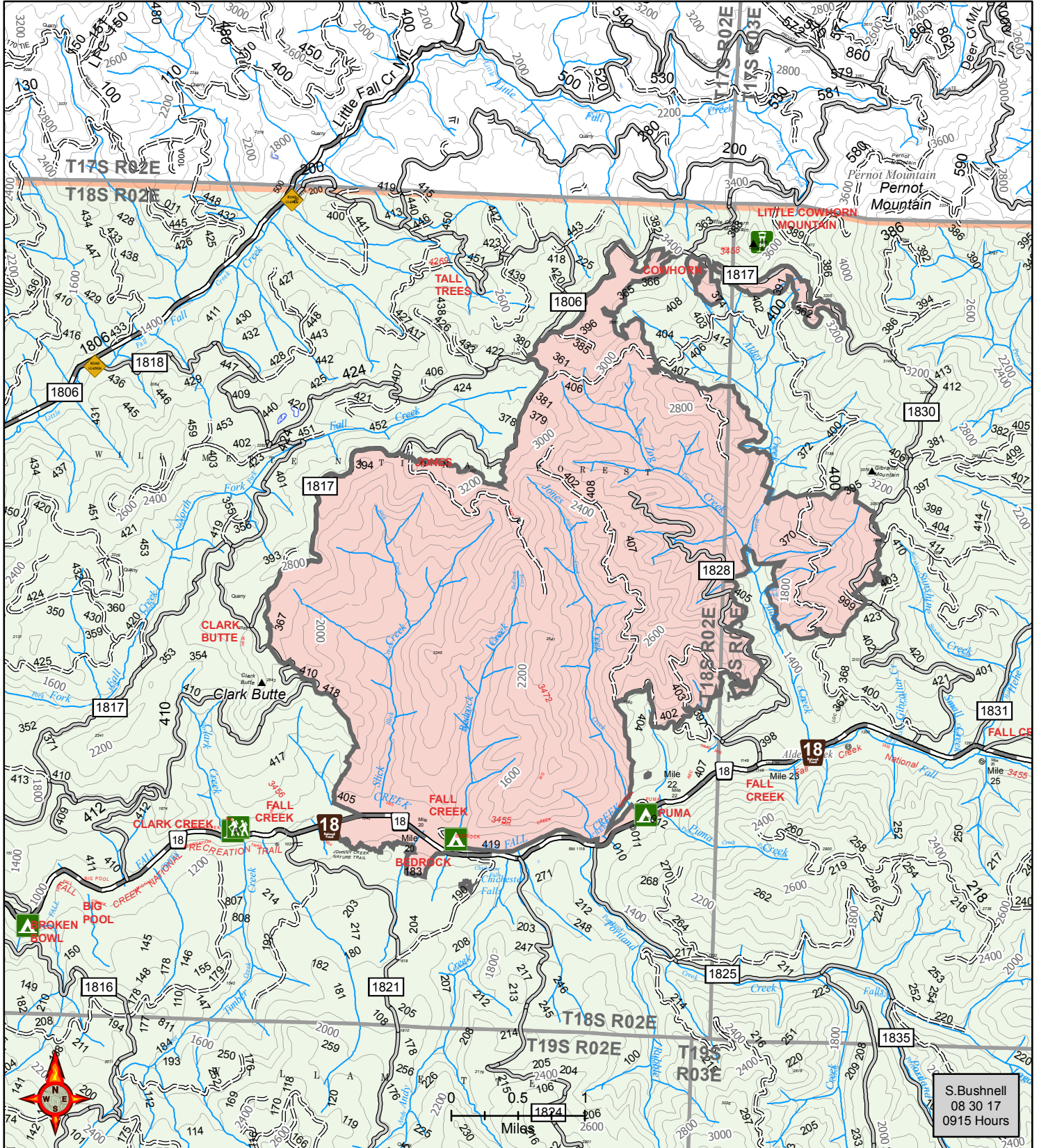


- Fire Area
- US Forest Service
- Primary Road
- Light-Duty Road
- Unimproved Road
- Contours 100-foot
- Road Closure (Fire Traffic Only)

**Disclaimer:**

While NW IMT12 makes every effort to represent the data shown on these maps as completely and accurately as possible, no warranty is given, expressed or implied, as to the accuracy, reliability, or completeness of these data. In addition, NW IMT12 and/or other participating agencies shall not be held liable for improper or incorrect use of the data described and/or contained herein. Graphical representations provided by the use of this data does not represent any legal description of the data herein and are provided only as a general representation of the data. No indication/statement of fire containment is given, expressed or implied by this product.

**More Information:**  
<http://inciweb.nwcg.gov>



S. Bushnell  
08 30 17  
0915 Hours