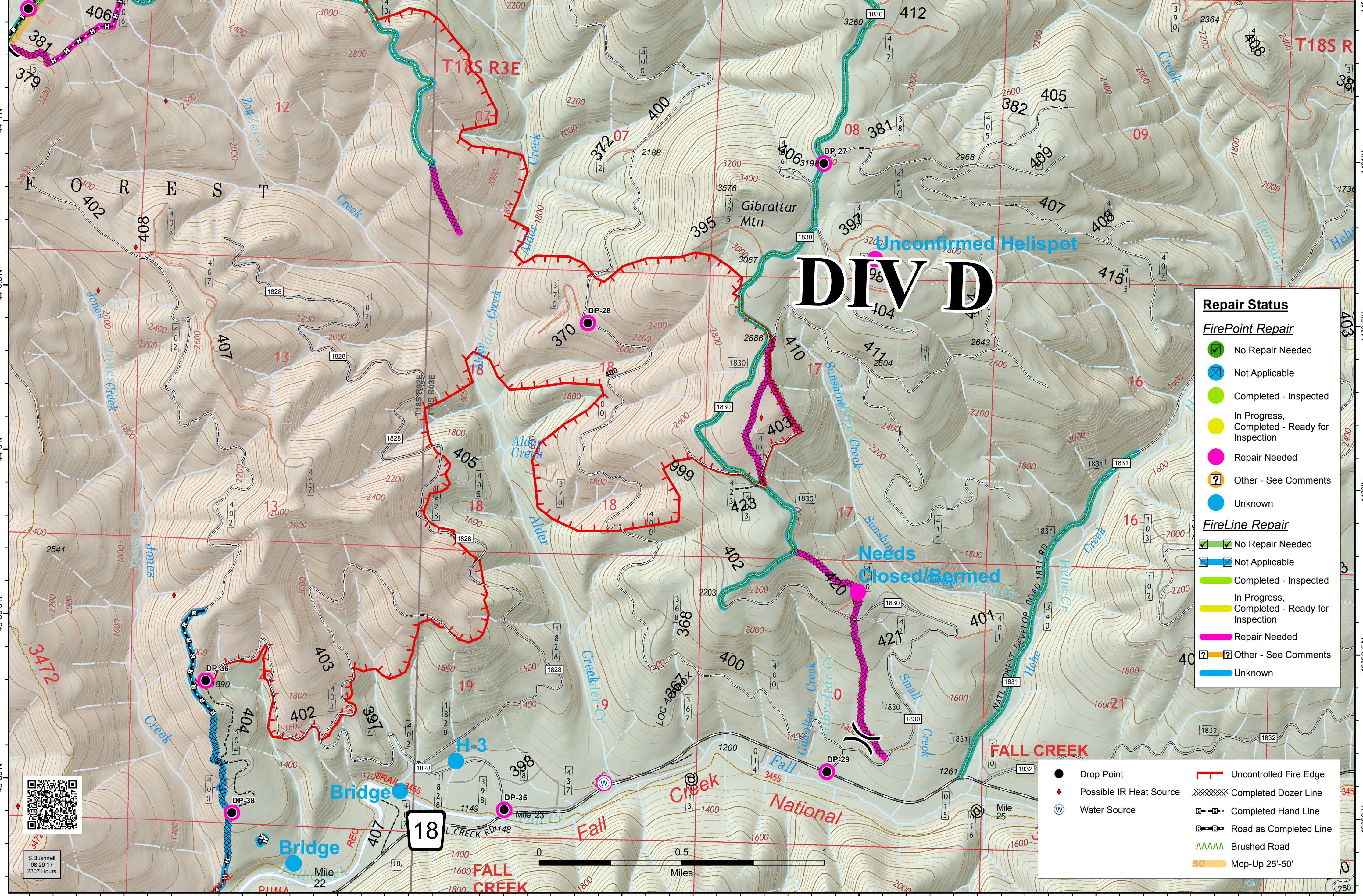
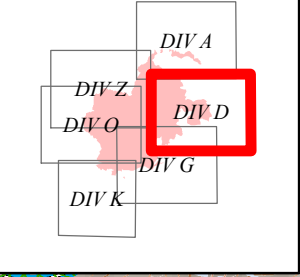


122°32'W 122°31.5'W 122°31'W 122°30.5'W 122°30'W 122°29.5'W 122°29'W 122°28.5'W 122°28'W 122°27.5'W 122°26'W

**JONES FIRE  
OR-WIF-170191  
Repair Status Map**  
Datum: North American 1983  
08/30/2017  
Day Shift  
Perimeter as of: 08/29/17 @ 0322  
Approx: 6,670 ac



Repair Status	
<b>FirePoint Repair</b>	
	No Repair Needed
	Not Applicable
	Completed - Inspected
	In Progress, Completed - Ready for Inspection
	Repair Needed
	Other - See Comments
	Unknown
<b>FireLine Repair</b>	
	No Repair Needed
	Not Applicable
	Completed - Inspected
	In Progress, Completed - Ready for Inspection
	Repair Needed
	Other - See Comments
	Unknown

	Drop Point		Uncontrolled Fire Edge
	Possible IR Heat Source		Completed Dozer Line
	Water Source		Completed Hand Line
			Road as Completed Line
			Brushed Road
			Mop-Up 25'-50'



S. Bushnell  
08/29/17  
2307 Hours



122°32'W 122°31.5'W 122°31'W 122°30.5'W 122°30'W 122°29.5'W 122°29'W 122°28.5'W 122°28'W 122°27.5'W 122°26.5'W