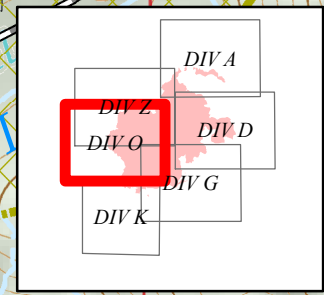


JONES FIRE
OR-WIF-170191
Repair Status Map
 Datum: North American 1983
 08/30/2017
 Day Shift
 Perimeter as of: 08/29/17 @ 0322
 Approx: 6,670 ac



Repair Status

FirePoint Repair

- No Repair Needed
- Not Applicable
- Completed - Inspected
- In Progress, Completed - Ready for Inspection
- Repair Needed
- Other - See Comments
- Unknown

FireLine Repair

- No Repair Needed
- Not Applicable
- Completed - Inspected
- In Progress, Completed - Ready for Inspection
- Repair Needed
- Other - See Comments
- Unknown

- Dip Site
- Drop Point
- Possible IR Heat Source
- Hazard Tree
- Uncontrolled Fire Edge
- Completed Line
- Completed Dozer Line
- Completed Hand Line
- Road as Completed Line
- Brushed Road
- Mop-Up 25'-50'
- Mop-Up 100'
- Late Successional Reserve



S. Bushnell
 08 29 17
 2309 Hours

18

18

WILLAMETTE NATIONAL FOREST RECREATION TRAIL

JOHNNY CREEK NATURE TRAIL

DIVO

DIV Z

W I L L A M E T T N A T I O N A L F O R E S T

CLARK BUTTE

FALL CREEK

CLARK CREEK CREEK Clark Crk Campground

122°37'W 122°36.5'W 122°36'W 122°35.5'W 122°35'W 122°34.5'W 122°34'W 122°33.5'W 122°33'W 122°32.5'W 122°32'W 122°31.5'W

44°1'N 44°0.5'N 44°0'N 43°59.5'N 43°59'N 43°58.5'N

44°1'N 44°0.5'N 44°0'N 43°59.5'N 43°59'N 43°58.5'N