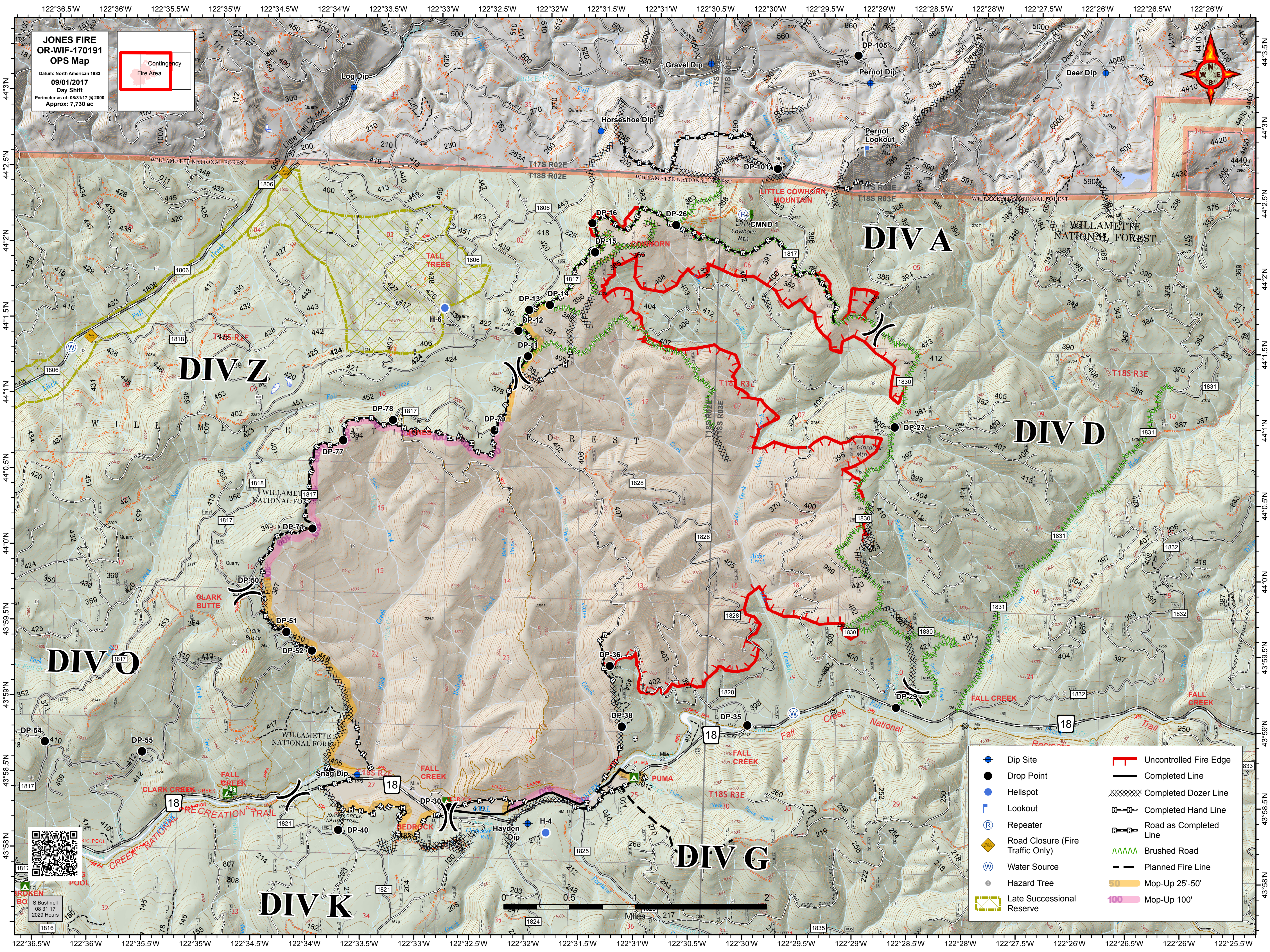
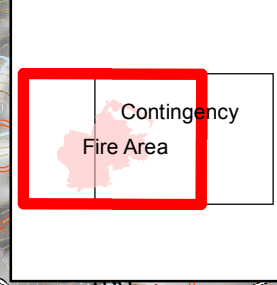
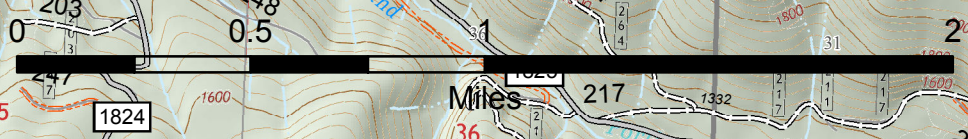
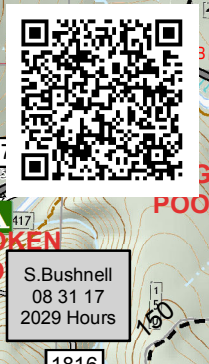


**JONES FIRE  
OR-WIF-170191  
OPS Map**  
Datum: North American 1983  
09/01/2017  
Day Shift  
Perimeter as of: 08/31/17 @ 2000  
Approx: 7,730 ac



- |                                  |                        |
|----------------------------------|------------------------|
| Dip Site                         | Uncontrolled Fire Edge |
| Drop Point                       | Completed Line         |
| Helispot                         | Completed Dozer Line   |
| Lookout                          | Completed Hand Line    |
| Repeater                         | Road as Completed Line |
| Road Closure (Fire Traffic Only) | Brushed Road           |
| Water Source                     | Planned Fire Line      |
| Hazard Tree                      | Mop-Up 25'-50'         |
| Late Successional Reserve        | Mop-Up 100'            |



**ROKEN  
BO**  
S. Bushnell  
08 31 17  
2029 Hours