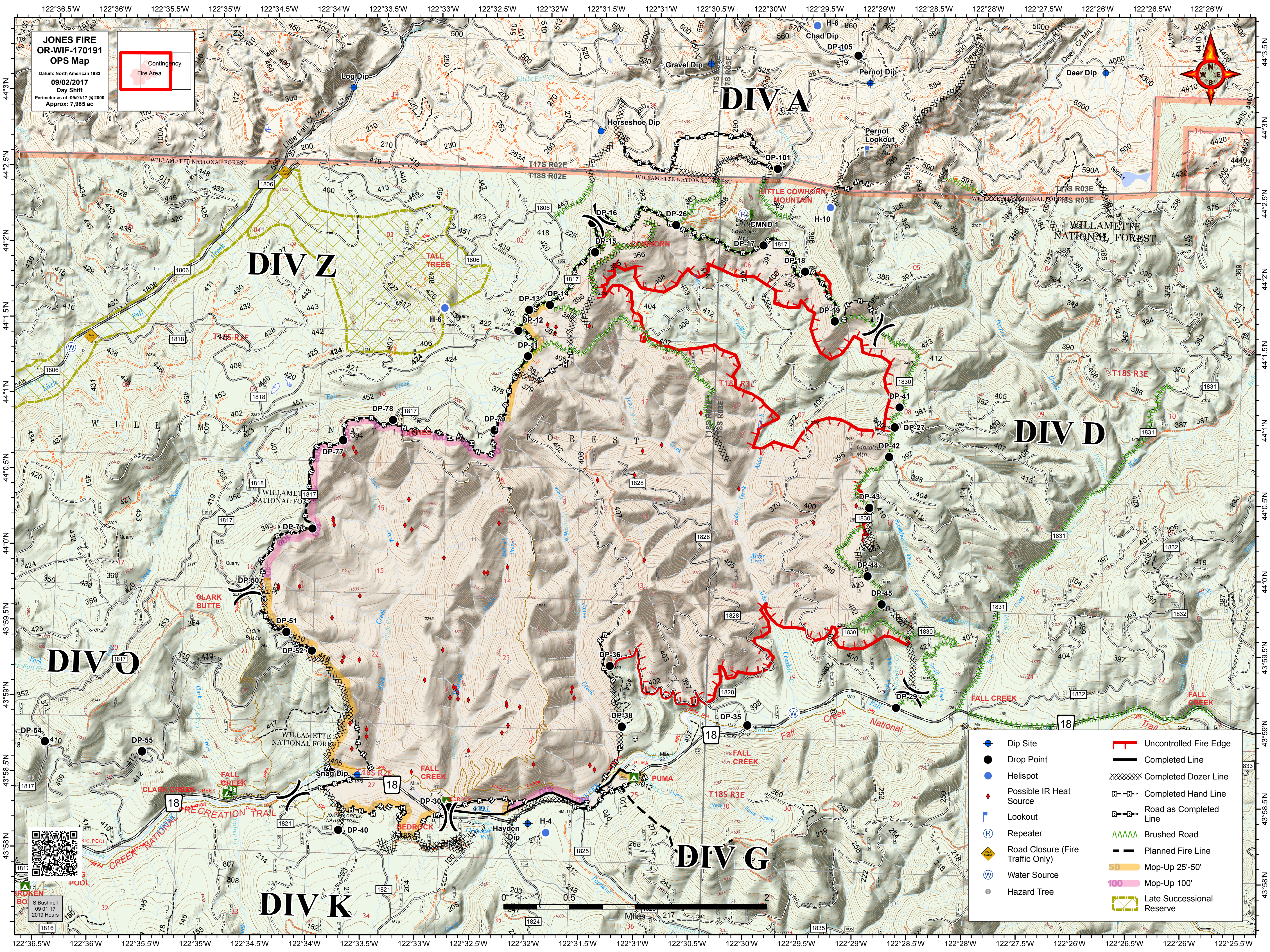
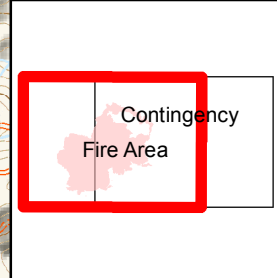


**JONES FIRE
OR-WIF-170191
OPS Map**
Datum: North American 1983
09/02/2017
Day Shift
Perimeter as of: 09/01/17 @ 2000
Approx: 7,985 ac



- | | |
|----------------------------------|---------------------------|
| Dip Site | Uncontrolled Fire Edge |
| Drop Point | Completed Line |
| Helispot | Completed Dozer Line |
| Possible IR Heat Source | Completed Hand Line |
| Lookout | Road as Completed Line |
| Repeater | Brushed Road |
| Road Closure (Fire Traffic Only) | Planned Fire Line |
| Water Source | Mop-Up 25'-50' |
| Hazard Tree | Mop-Up 100' |
| | Late Successional Reserve |



122°36.5'W 122°36'W 122°35.5'W 122°35'W 122°34.5'W 122°34'W 122°33.5'W 122°33'W 122°32.5'W 122°32'W 122°31.5'W 122°31'W 122°30.5'W 122°30'W 122°29.5'W 122°29'W 122°28.5'W 122°28'W 122°27.5'W 122°27'W 122°26.5'W 122°26'W

44°3'N 44°2.5'N 44°2'N 44°1.5'N 44°1'N 44°0.5'N 44°0'N 43°59.5'N 43°59'N 43°58.5'N 43°58'N