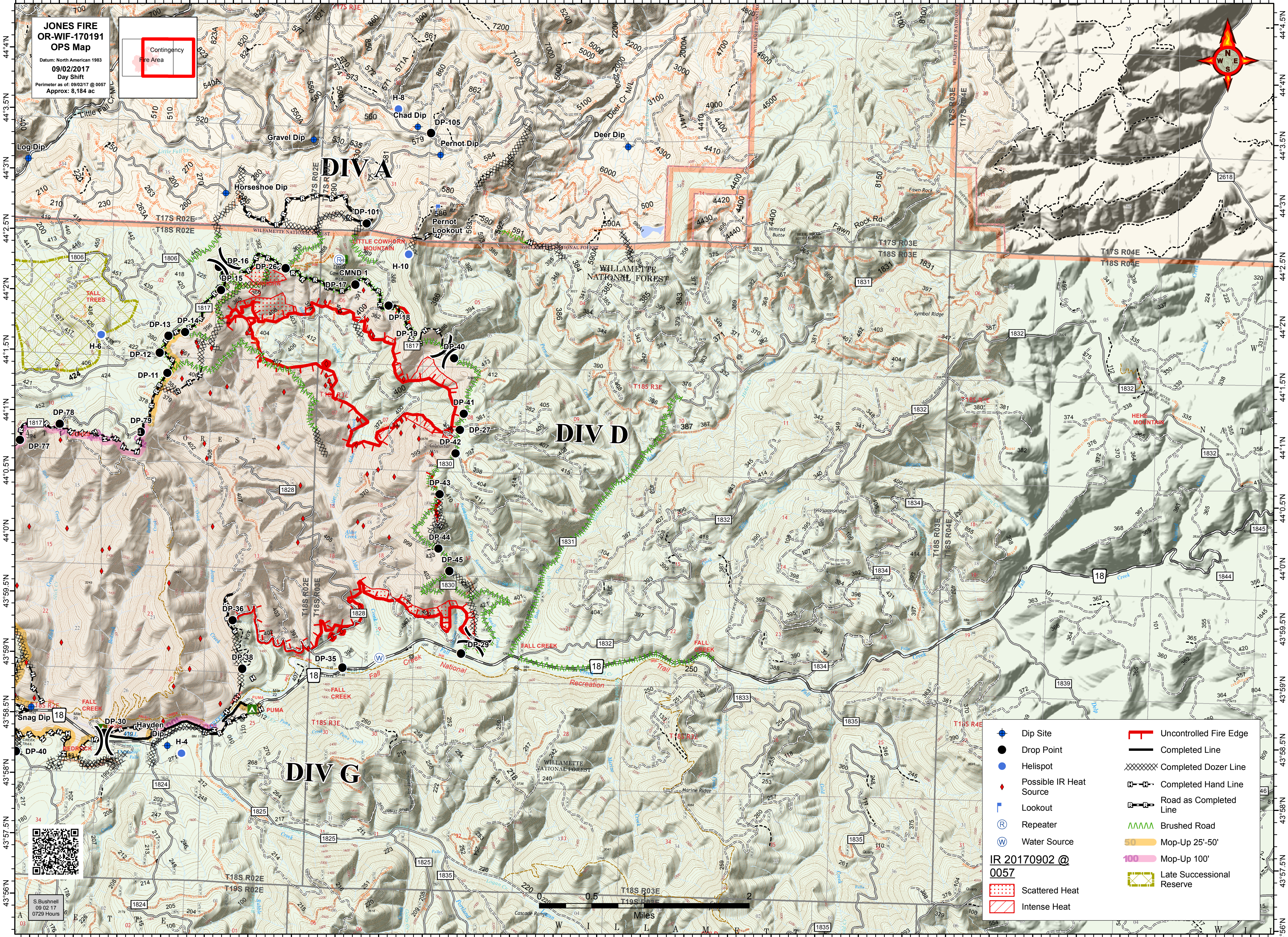


122°34'W 122°33.5'W 122°33'W 122°32.5'W 122°32'W 122°31.5'W 122°31'W 122°30.5'W 122°30'W 122°29.5'W 122°29'W 122°28.5'W 122°28'W 122°27.5'W 122°27'W 122°26.5'W 122°26'W 122°25.5'W 122°25'W 122°24.5'W 122°23'W 122°23.5'W 122°23'W 122°22.5'W 122°22'W 122°21.5'W 122°21'W 122°20.5'W 122°20'W

**JONES FIRE  
OR-WIF-170191  
OPS Map**

Datum: North American 1983  
 09/02/2017  
 Day Shift  
 Perimeter as of: 09/02/17 @ 0057  
 Approx: 8,184 ac



Dip Site	Uncontrolled Fire Edge
Drop Point	Completed Line
Helispot	Completed Dozer Line
Possible IR Heat Source	Completed Hand Line
Lookout	Road as Completed Line
Repeater	Brushed Road
Water Source	Mop-Up 25'-50'
Scattered Heat	Mop-Up 100'
Intense Heat	Late Successional Reserve

**IR 20170902 @ 0057**



S. Bushnell  
 09 02 17  
 0729 Hours



122°33.5'W 122°33'W 122°32.5'W 122°32'W 122°31.5'W 122°31'W 122°30.5'W 122°30'W 122°29.5'W 122°29'W 122°28.5'W 122°28'W 122°27.5'W 122°27'W 122°26.5'W 122°26'W 122°25.5'W 122°25'W 122°24.5'W 122°23'W 122°23.5'W 122°23'W 122°22.5'W 122°22'W 122°21.5'W 122°21'W 122°20.5'W 122°20'W