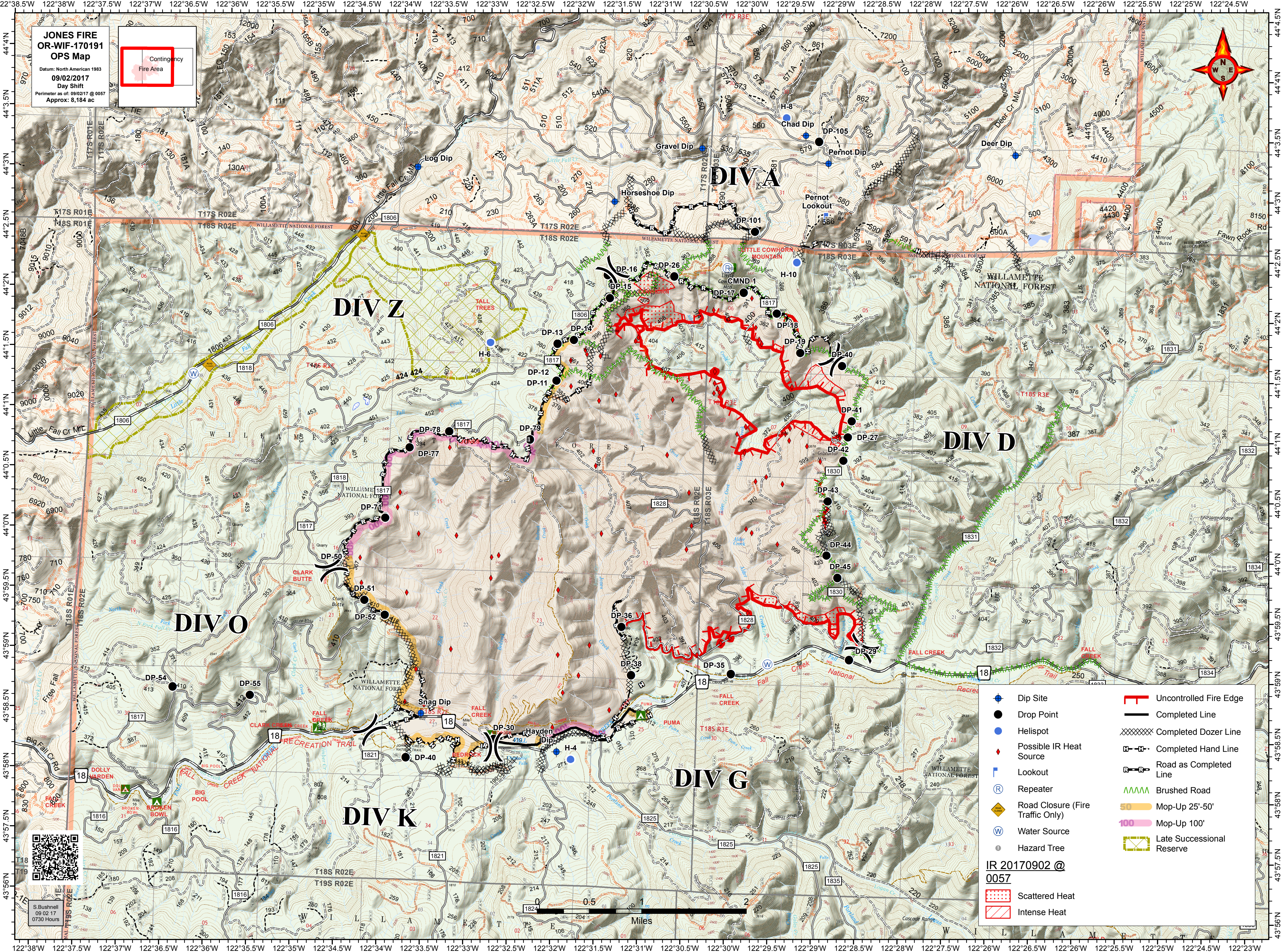
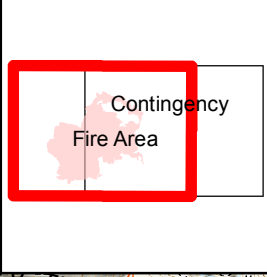


**JONES FIRE
OR-WIF-170191
OPS Map**
Datum: North American 1983
09/02/2017
Day Shift
Perimeter as of: 09/02/17 @ 0057
Approx: 8,184 ac

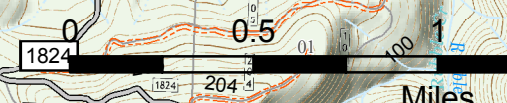


- Dip Site
- Drop Point
- Helispot
- Possible IR Heat Source
- Lookout
- Repeater
- Road Closure (Fire Traffic Only)
- Water Source
- Hazard Tree
- Uncontrolled Fire Edge
- Completed Line
- Completed Dozer Line
- Completed Hand Line
- Road as Completed Line
- Brushed Road
- Mop-Up 25'-50'
- Mop-Up 100'
- Late Successional Reserve
- Scattered Heat
- Intense Heat

IR 20170902 @ 0057



S. Bushnell
09 02 17
0730 Hours



122°38.5'W 122°38'W 122°37.5'W 122°37'W 122°36.5'W 122°36'W 122°35.5'W 122°35'W 122°34.5'W 122°34'W 122°33.5'W 122°33'W 122°32.5'W 122°32'W 122°31.5'W 122°31'W 122°30.5'W 122°30'W 122°29.5'W 122°29'W 122°28.5'W 122°28'W 122°27.5'W 122°26'W 122°26.5'W 122°26'W 122°25.5'W 122°25'W 122°24.5'W

44°4.5'N 44°4'N 44°3.5'N 44°3'N 44°2.5'N 44°2'N 44°1.5'N 44°1'N 44°0.5'N 44°0'N 43°59.5'N 43°59'N 43°58.5'N 43°58'N 43°57.5'N 43°57'N 43°56.5'N 43°56'N