



U.S. FOREST SERVICE
Caring for the land and serving people

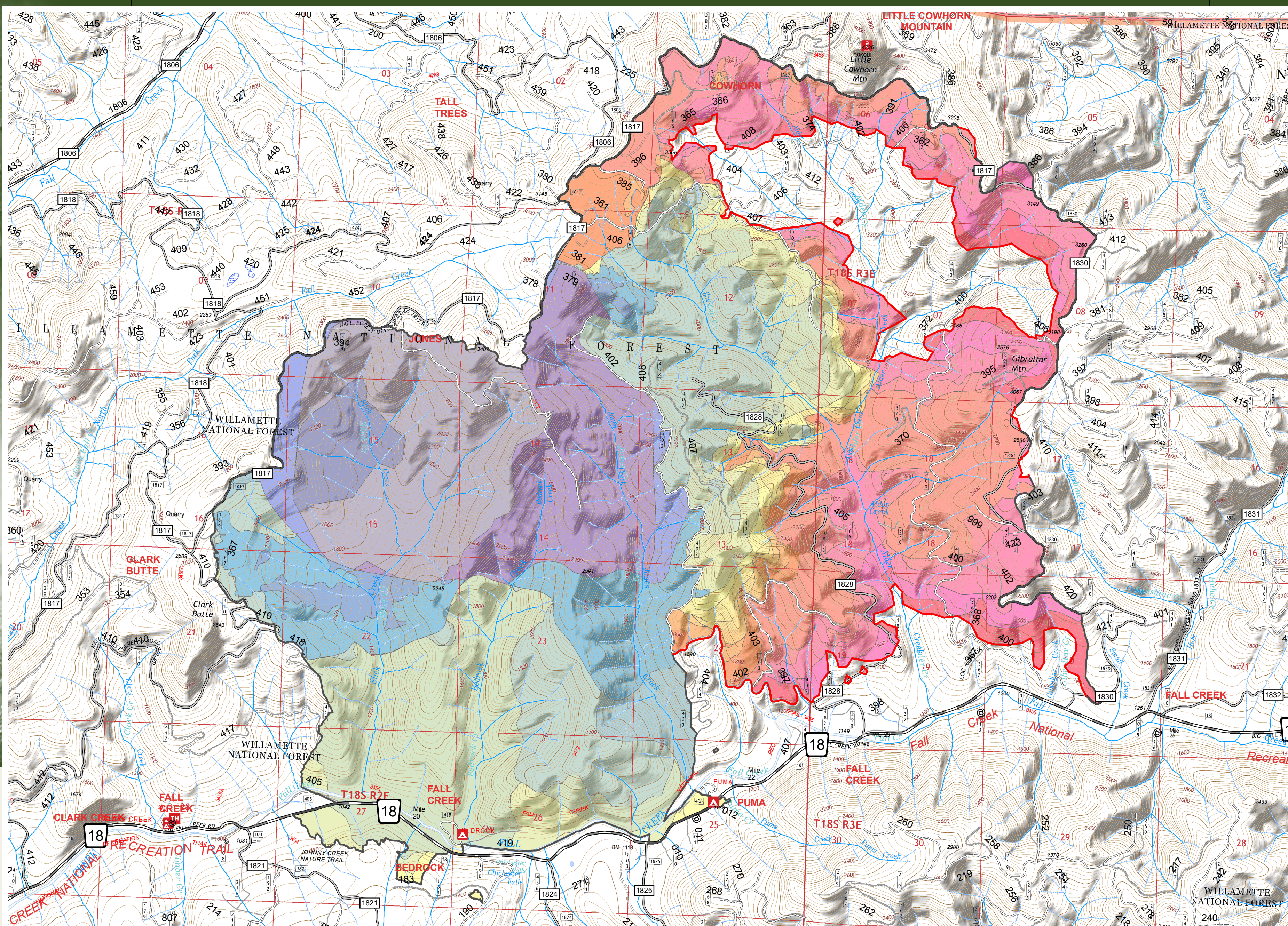
Willamette National Forest



United States Department of Agriculture

JONES FIRE PROGRESSION

August 1st - September 1st, 2017



Date	Daily Growth	Total
08/10	183	183
08/11	811	994
08/12	715	1,709
08/13	161	1,871
08/14 / 15	110	1,981
08/16	613	2,593
08/17 / 18	131	2,725
08/19	1,003	3,728
08/20	1,210	4,938
08/21	384	5,321
08/22	111	5,432
08/23	72	5,504
08/24	29	5,534
08/25	47	5,580
08/26	49	5,630
08/27	203	5,831
08/28	891	6,722
08/29	248	6,970
08/30	729	7,699
08/31	239	7,938
09/01	249	8,187

1 inch equals 0.38 miles

Disclaimer:

While the U.S. Forest Service makes every effort to represent the data shown on these maps as completely and accurately as possible, the USFS gives no warranty, expressed or implied, as to the accuracy, reliability, or completeness of these data. In addition, the USFS, ODF, or NWIMT shall not be held liable for improper or incorrect use of the data described and/or contained herein. Graphical representations provided by the use of this data do not represent any legal description of the data herein and are provided only as a general representation of the data.



Special Thanks: National Infrared Operations, National Interagency Fire Center, Northwest Interagency Coordination Center, U.S. Forest Service, Oregon Department of Forestry, Weyerhaeuser Company, National Oceanic and Atmospheric Administration
Photo Credits: NW IMT12 PIO - Chuck Turley (Rail Fire) Map Credits: NW IMT12 GIS - Shawn Bushnell
Published: 09/02/2017

