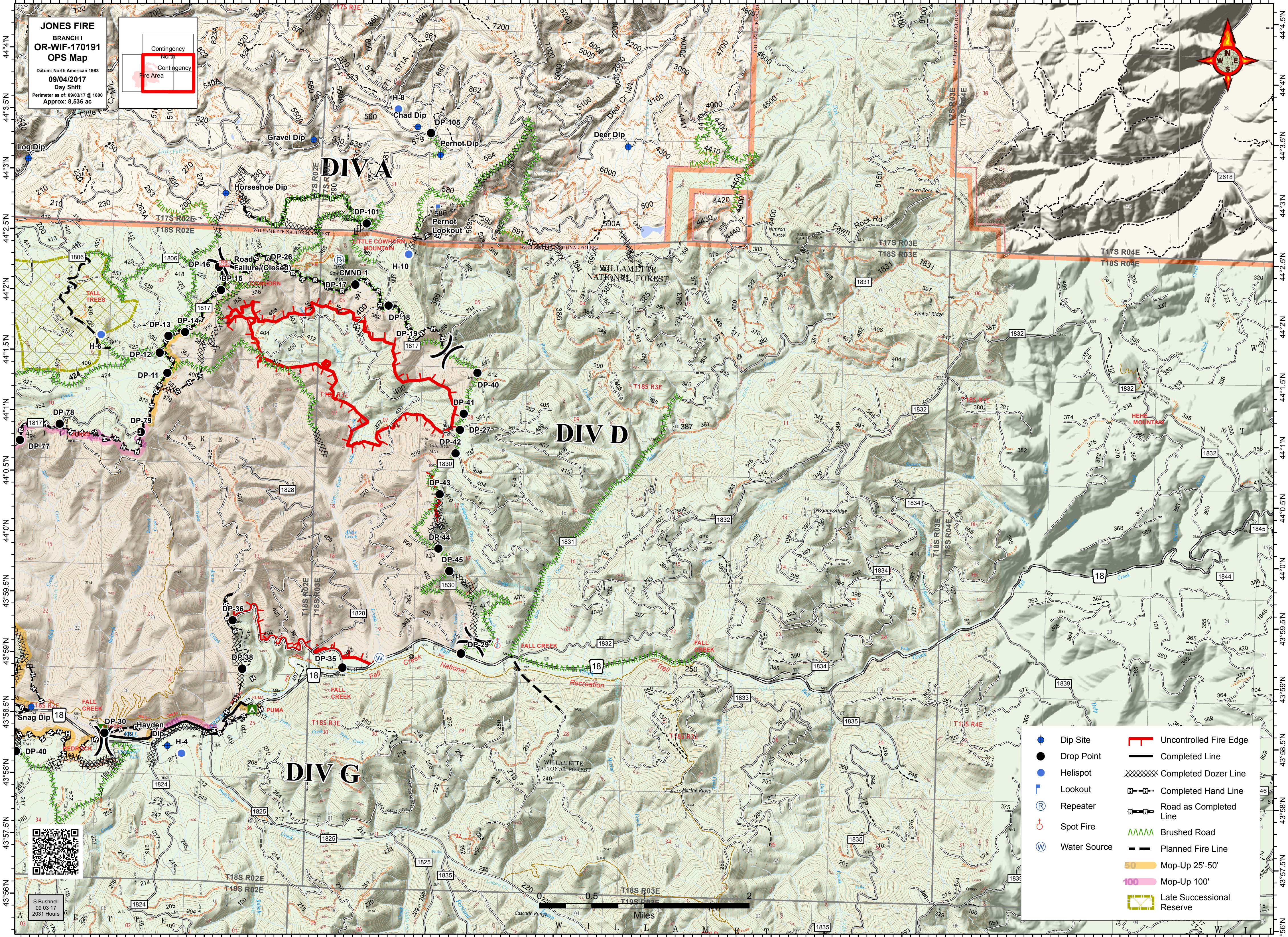
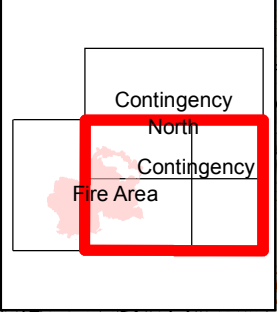


122°34'W 122°33.5'W 122°33'W 122°32.5'W 122°32'W 122°31.5'W 122°31'W 122°30.5'W 122°30'W 122°29.5'W 122°29'W 122°28.5'W 122°28'W 122°27.5'W 122°27'W 122°26.5'W 122°26'W 122°25.5'W 122°25'W 122°24.5'W 122°23'W 122°23.5'W 122°23'W 122°22.5'W 122°22'W 122°21.5'W 122°21'W 122°20.5'W 122°20'W

**JONES FIRE**  
BRANCH I  
**OR-WIF-170191**  
**Ops Map**  
Datum: North American 1983  
09/04/2017  
Day Shift  
Perimeter as of: 09/03/17 @ 1800  
Approx: 8,536 ac



- Dip Site
- Drop Point
- Helispot
- Lookout
- Repeater
- Spot Fire
- Water Source
- Uncontrolled Fire Edge
- Completed Line
- Completed Dozer Line
- Completed Hand Line
- Road as Completed Line
- Brushed Road
- Planned Fire Line
- Mop-Up 25'-50'
- Mop-Up 100'
- Late Successional Reserve



S. Bushnell  
09/03/17  
2031 Hours



122°33.5'W 122°33'W 122°32.5'W 122°32'W 122°31.5'W 122°31'W 122°30.5'W 122°30'W 122°29.5'W 122°29'W 122°28.5'W 122°28'W 122°27.5'W 122°27'W 122°26.5'W 122°26'W 122°25.5'W 122°25'W 122°24.5'W 122°23'W 122°23.5'W 122°23'W 122°22.5'W 122°22'W 122°21.5'W 122°21'W 122°20.5'W 122°20'W 122°19.5'W