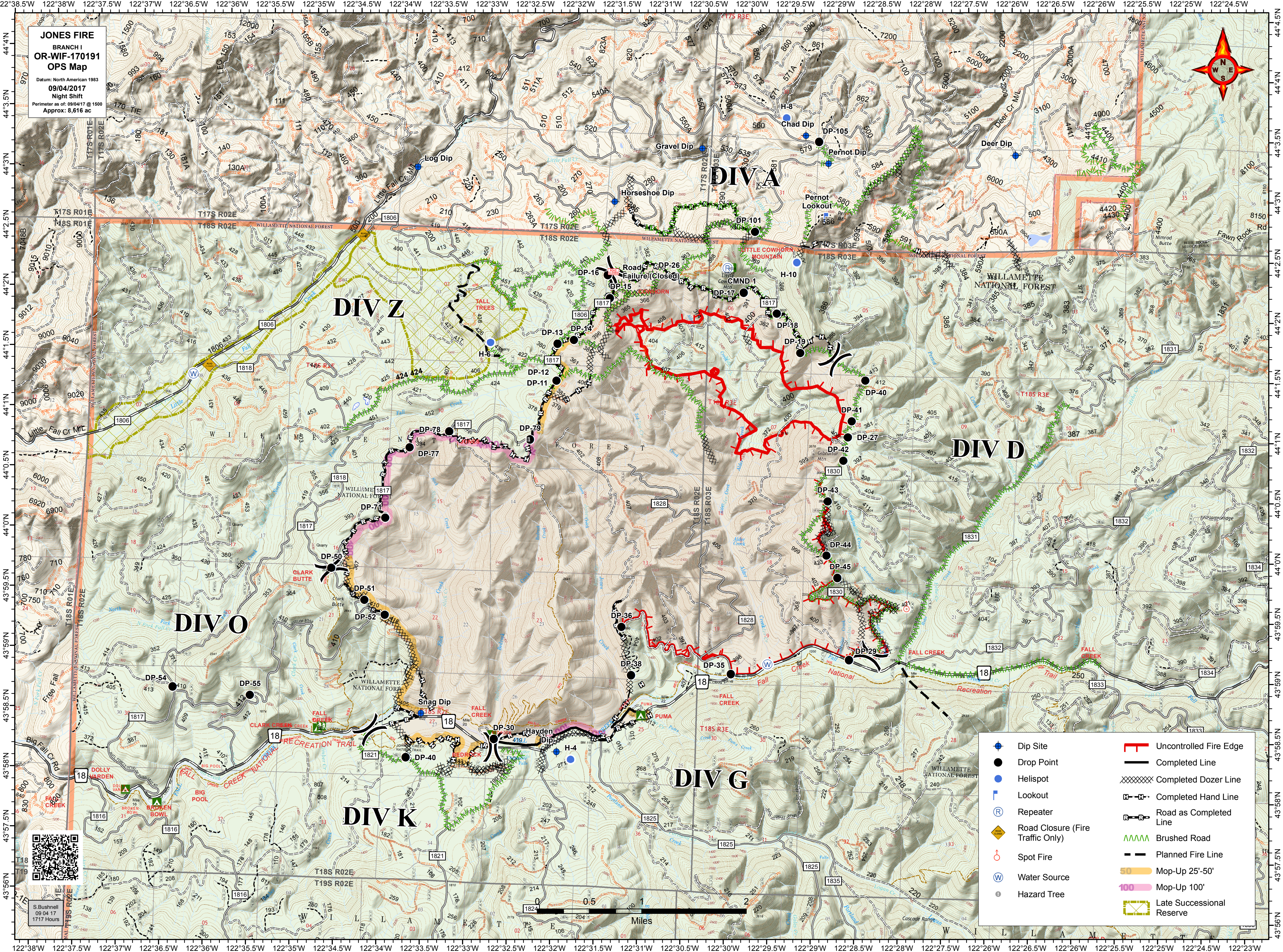


JONES FIRE
 BRANCH I
OR-WIF-170191
Ops Map
 Datum: North American 1983
 09/04/2017
 Night Shift
 Perimeter as of: 09/04/17 @ 1500
 Approx: 8,616 ac



- | | |
|----------------------------------|---------------------------|
| Dip Site | Uncontrolled Fire Edge |
| Drop Point | Completed Line |
| Helispot | Completed Dozer Line |
| Lookout | Completed Hand Line |
| Repeater | Road as Completed Line |
| Road Closure (Fire Traffic Only) | Brushed Road |
| Spot Fire | Planned Fire Line |
| Water Source | Mop-Up 25'-50' |
| Hazard Tree | Mop-Up 100' |
| | Late Successional Reserve |



S. Bushnell
 09/04/17
 1717 Hours

0 0.5 1 2 Miles