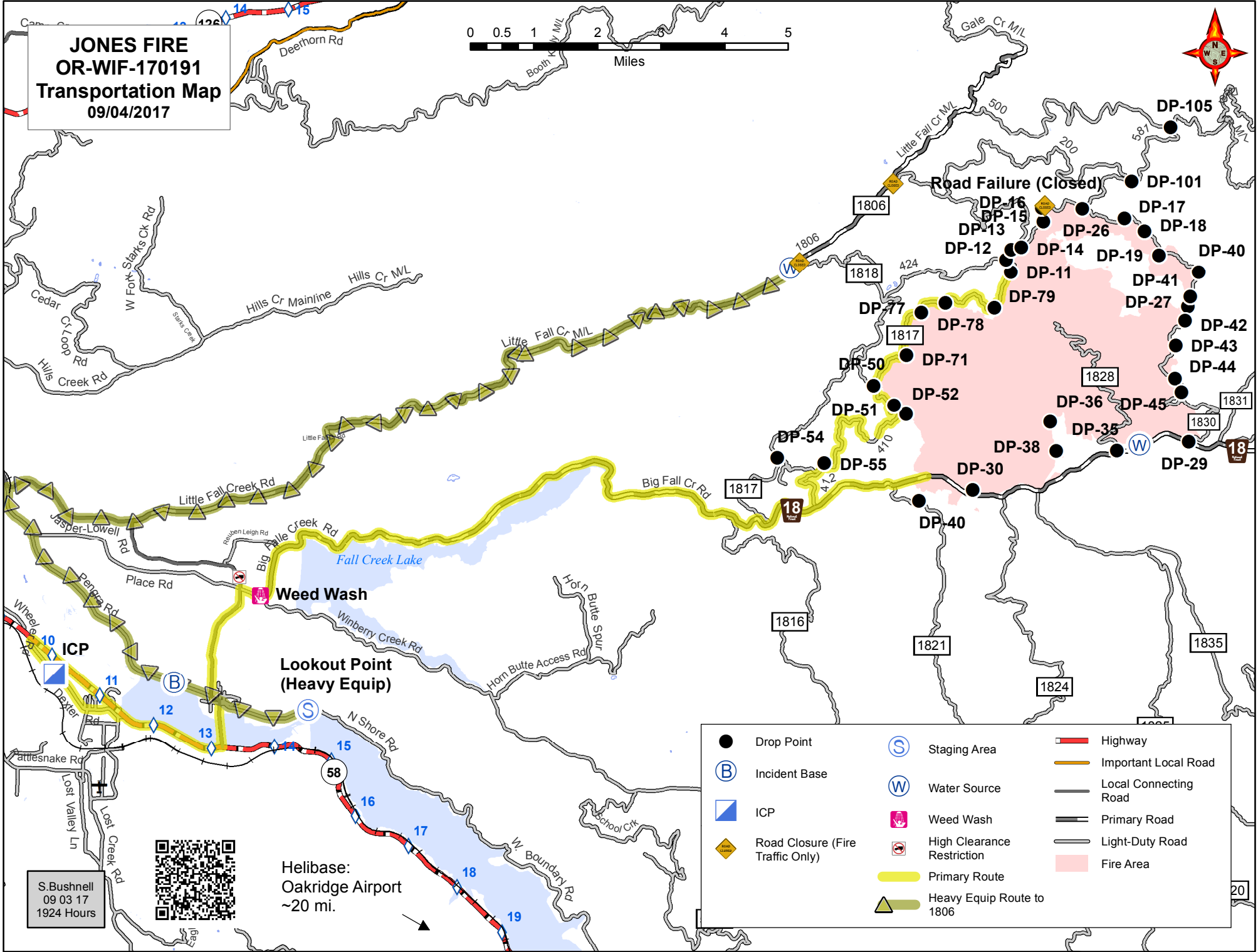


**JONES FIRE
OR-WIF-170191
Transportation Map
09/04/2017**



●	Drop Point	Ⓢ	Staging Area	▬	Highway
Ⓟ	Incident Base	Ⓜ	Water Source	▬	Important Local Road
▬	ICP	Ⓜ	Weed Wash	▬	Local Connecting Road
◆	Road Closure (Fire Traffic Only)	Ⓜ	High Clearance Restriction	▬	Primary Road
▬	Primary Route	▬	Fire Area	▬	Light-Duty Road
▬	Heavy Equip Route to 1806				

S. Bushnell
09 03 17
1924 Hours



Helibase:
Oakridge Airport
~20 mi.