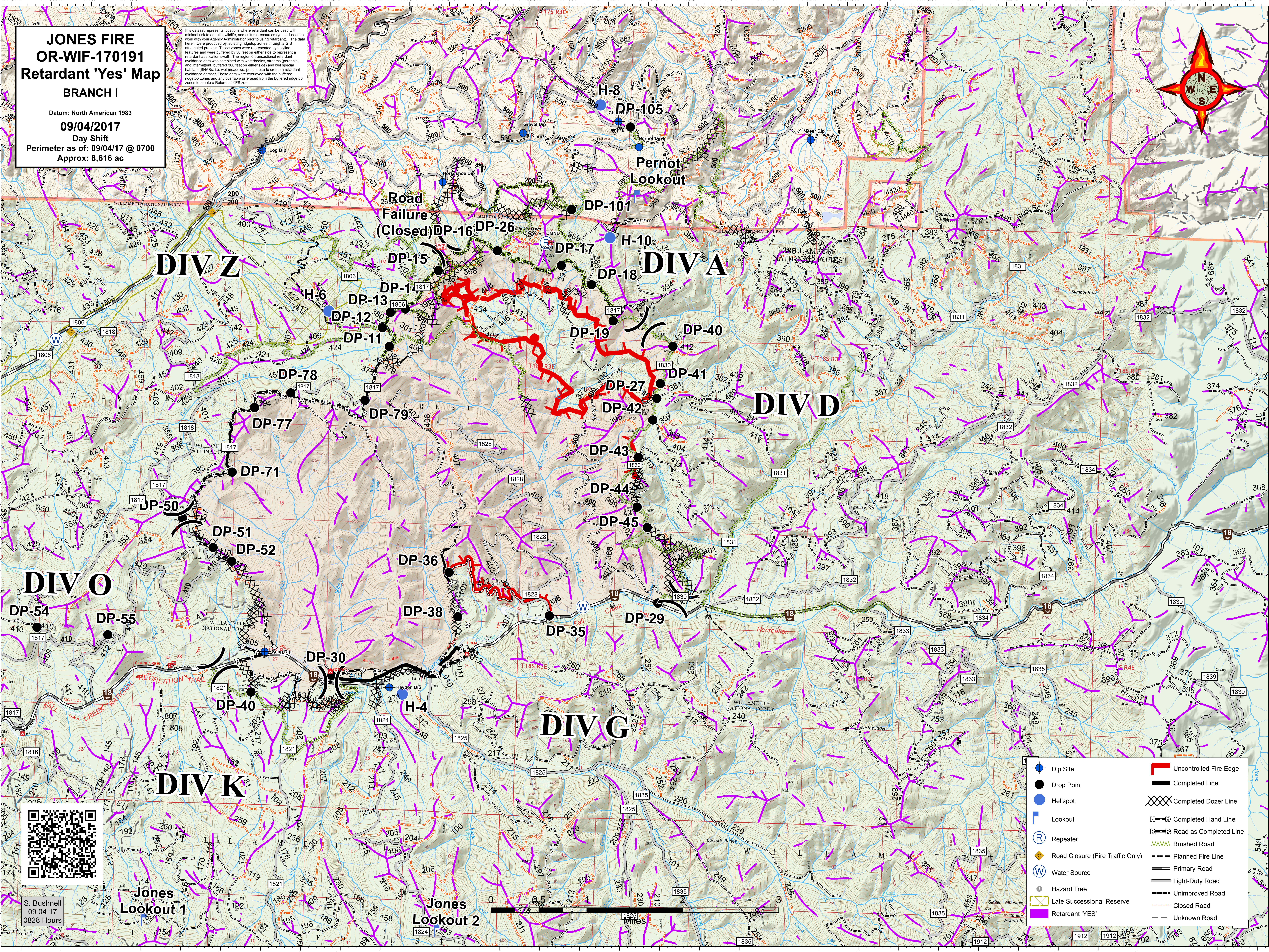


JONES FIRE OR-WIF-170191 Retardant 'Yes' Map BRANCH I

Datum: North American 1983
09/04/2017
 Day Shift
 Perimeter as of: 09/04/17 @ 0700
 Approx: 8,616 ac

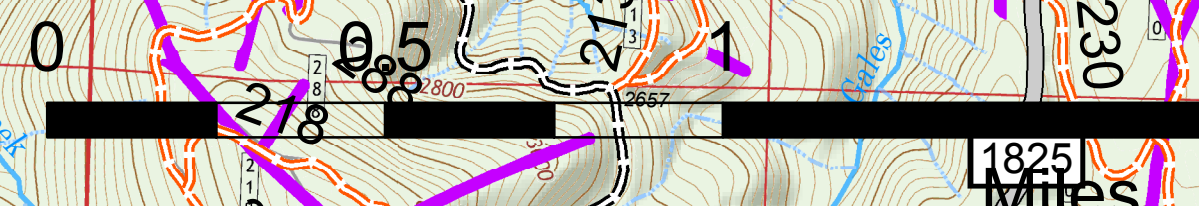
This dataset represents locations where retardant can be used with minimal risk to aquatic, wildlife, and cultural resources you still need to work with your Agency Administrator prior to using retardant. The data herein were produced by loading ridge-top zones through a GIS automated process. Those zones were represented by polyline features and were buffered by 50 feet on either side to represent a retardant application swath. The ridge-top retardant avoidance data was combined with waterbodies, streams (perennial and intermittent), buffered 300 feet on either side, and wet special habitats (SHABs, i.e. wet meadows, ponds, etc) to create a retardant avoidance dataset. Those data were overlaid with the buffered ridge-top zones and any overlap was erased from the buffered ridge-top zones to create a Retardant YES zone.



S. Bushnell
 09 04 17
 0828 Hours

Jones
 Lookout 1

Jones
 Lookout 2



- | | |
|----------------------------------|------------------------|
| Dip Site | Uncontrolled Fire Edge |
| Drop Point | Completed Line |
| Helispot | Completed Dozer Line |
| Lookout | Completed Hand Line |
| Repeater | Road as Completed Line |
| Road Closure (Fire Traffic Only) | Brushed Road |
| Water Source | Planned Fire Line |
| Hazard Tree | Primary Road |
| Late Successional Reserve | Light-Duty Road |
| Retardant 'YES' | Unimproved Road |
| | Closed Road |
| | Unknown Road |