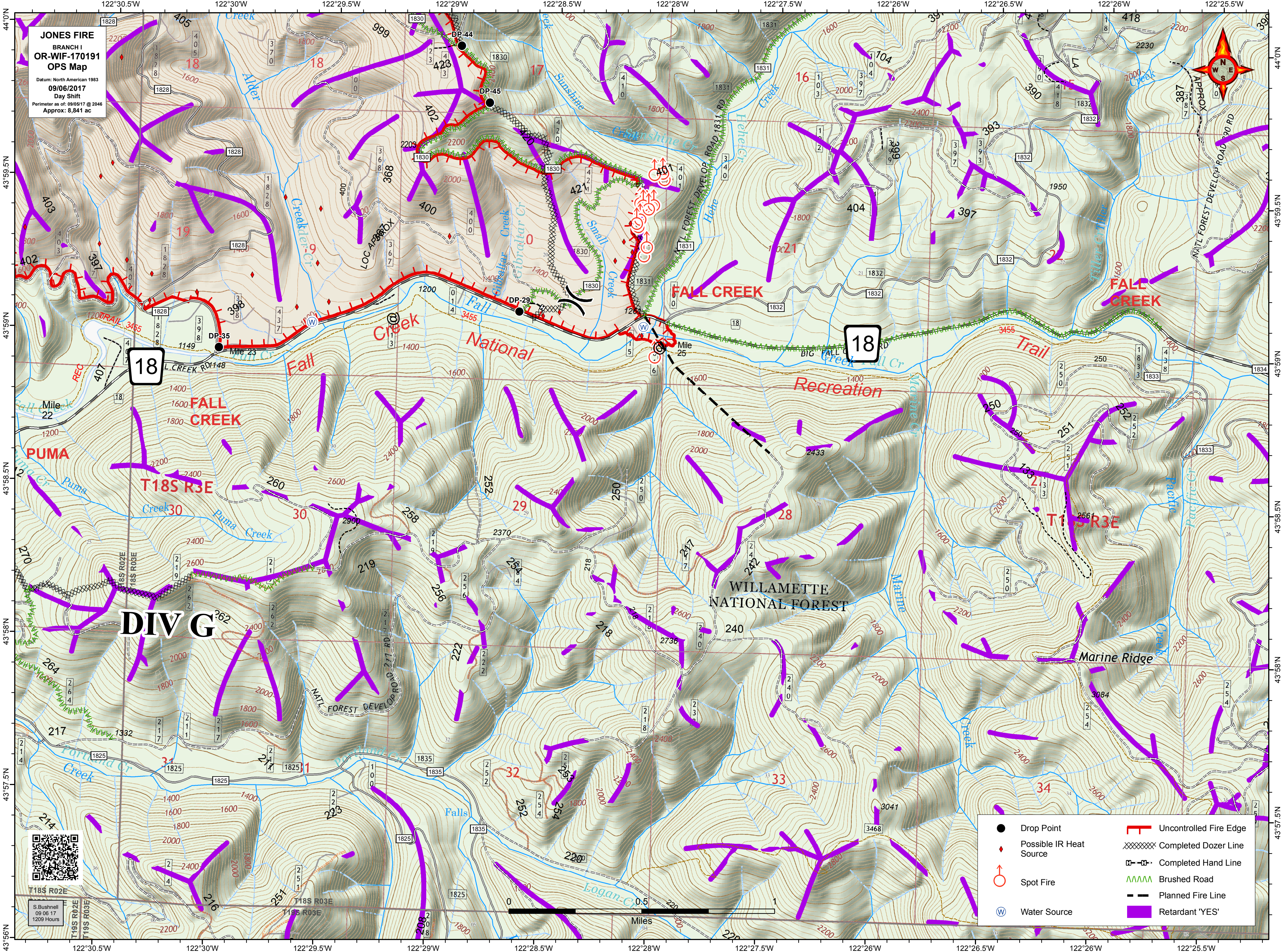


JONES FIRE
 BRANCH I
OR-WIF-170191
OPS Map
 Datum: North American 1983
 09/06/2017
 Day Shift
 Perimeter as of: 09/05/17 @ 2046
 Approx: 8,841 ac



18

18

DIV G

- Drop Point
- ◆ Possible IR Heat Source
- ♂ Spot Fire
- ⊕ Water Source
- Uncontrolled Fire Edge
- XXXXX Completed Dozer Line
- Completed Hand Line
- AAAAA Brushed Road
- Planned Fire Line
- Retardant 'YES'



S. Bushnell
 09/06/17
 1209 Hours

Miles
 0 0.5 1

44°0'N 43°59.5'N 43°59'N 43°58.5'N 43°58'N 43°57.5'N 43°56'N
 122°30.5'W 122°30'W 122°29.5'W 122°29'W 122°28.5'W 122°28'W 122°27.5'W 122°26'W 122°25.5'W