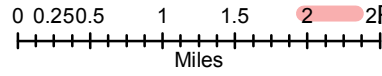


**JONES FIRE**  
**Road Closure Map**  
**09/06/2017**  
 Approx: 8,600 ac



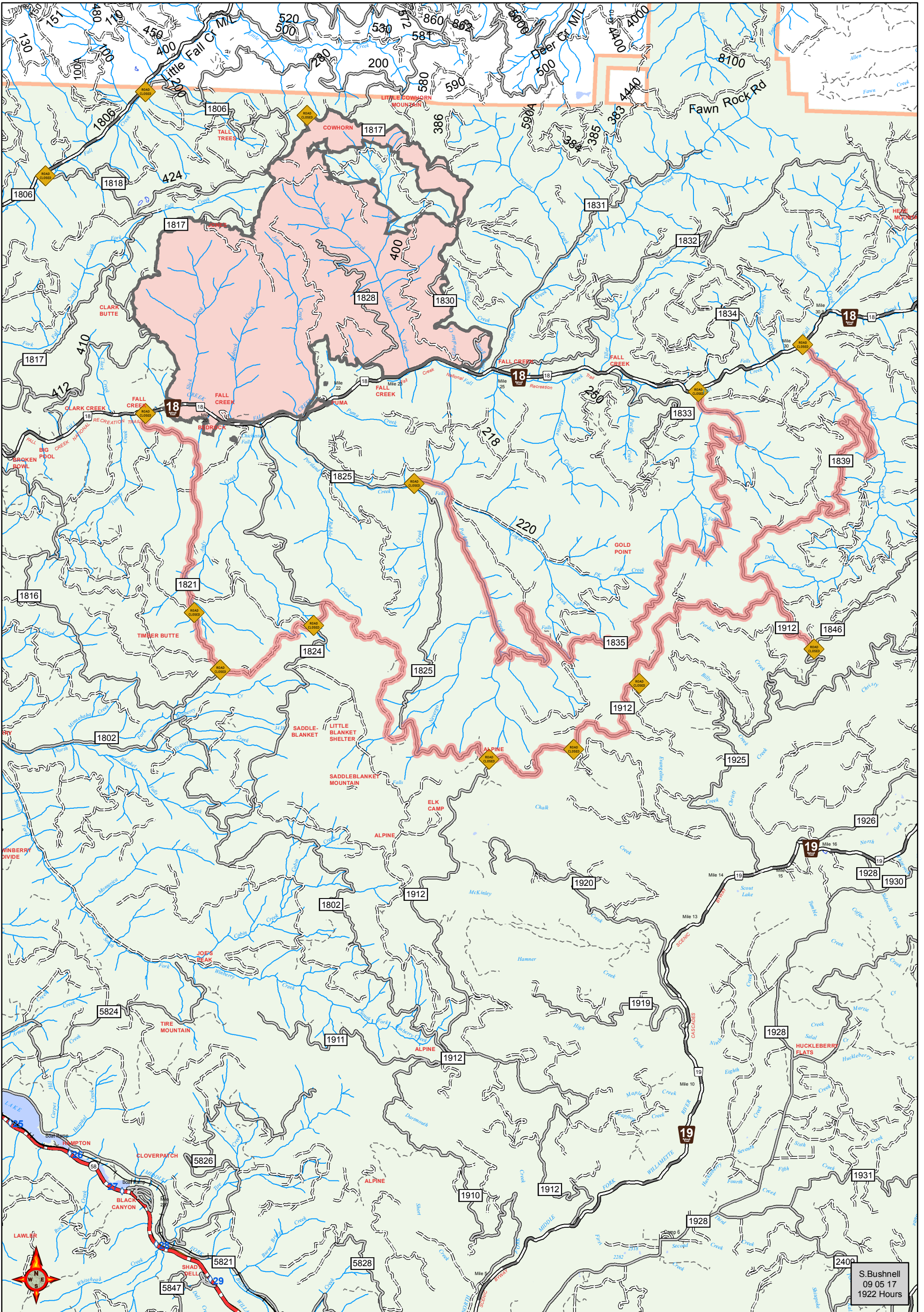
- Fire Area
- US Forest Service
- Contours 100-foot
- Road Closure (Fire Traffic Only)
- Highway
- Primary Road
- Light-Duty Road
- Unimproved Road
- Closed Road
- 2 Road Closure



**Disclaimer:**

While NW IMT12 makes every effort to represent the data shown on these maps as completely and accurately as possible, no warranty is given, expressed or implied, as to the accuracy, reliability, or completeness of these data. In addition, NW IMT12 and/or other participating agencies shall not be held liable for improper or incorrect use of the data described and/or contained herein. Graphical representations provided by the use of this data does not represent any legal description of the data herein and are provided only as a general representation of the data. No indication/statement of fire containment is given, expressed or implied by this product.

**More Information:**  
<http://inciweb.nwcg.gov>



S. Bushnell  
 09 05 17  
 1922 Hours