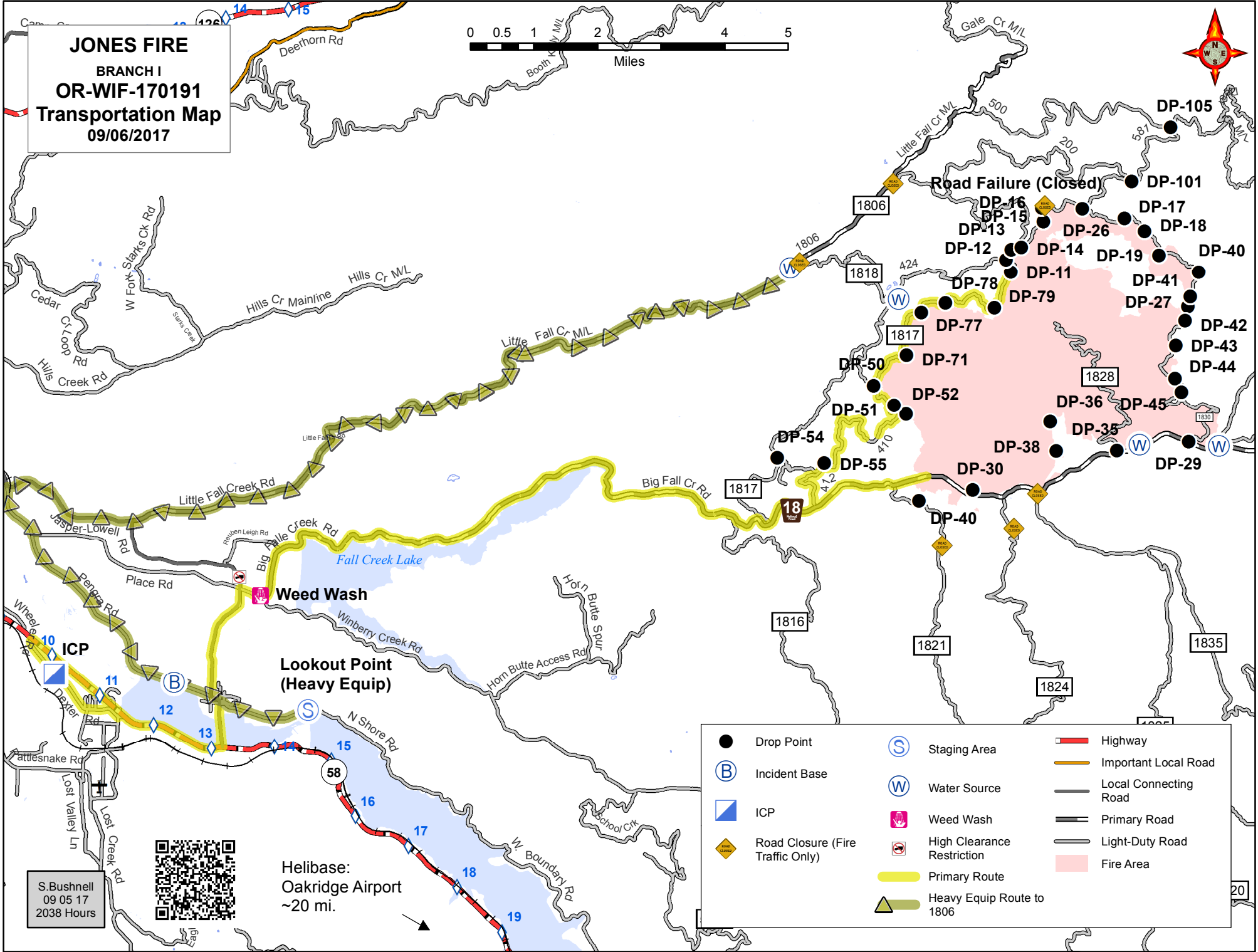


JONES FIRE
BRANCH I
OR-WIF-170191
Transportation Map
09/06/2017



- | | | |
|------------------------------------|------------------------------|-------------------------|
| ● Drop Point | Ⓢ Staging Area | ▬ Highway |
| Ⓟ Incident Base | Ⓦ Water Source | ▬ Important Local Road |
| ▬ ICP | Ⓜ Weed Wash | ▬ Local Connecting Road |
| ◆ Road Closure (Fire Traffic Only) | Ⓡ High Clearance Restriction | ▬ Primary Road |
| ▬ Primary Route | ▬ Heavy Equip Route to 1806 | ▬ Light-Duty Road |
| | | ▬ Fire Area |

S. Bushnell
 09 05 17
 2038 Hours



Helibase:
 Oakridge Airport
 ~20 mi.