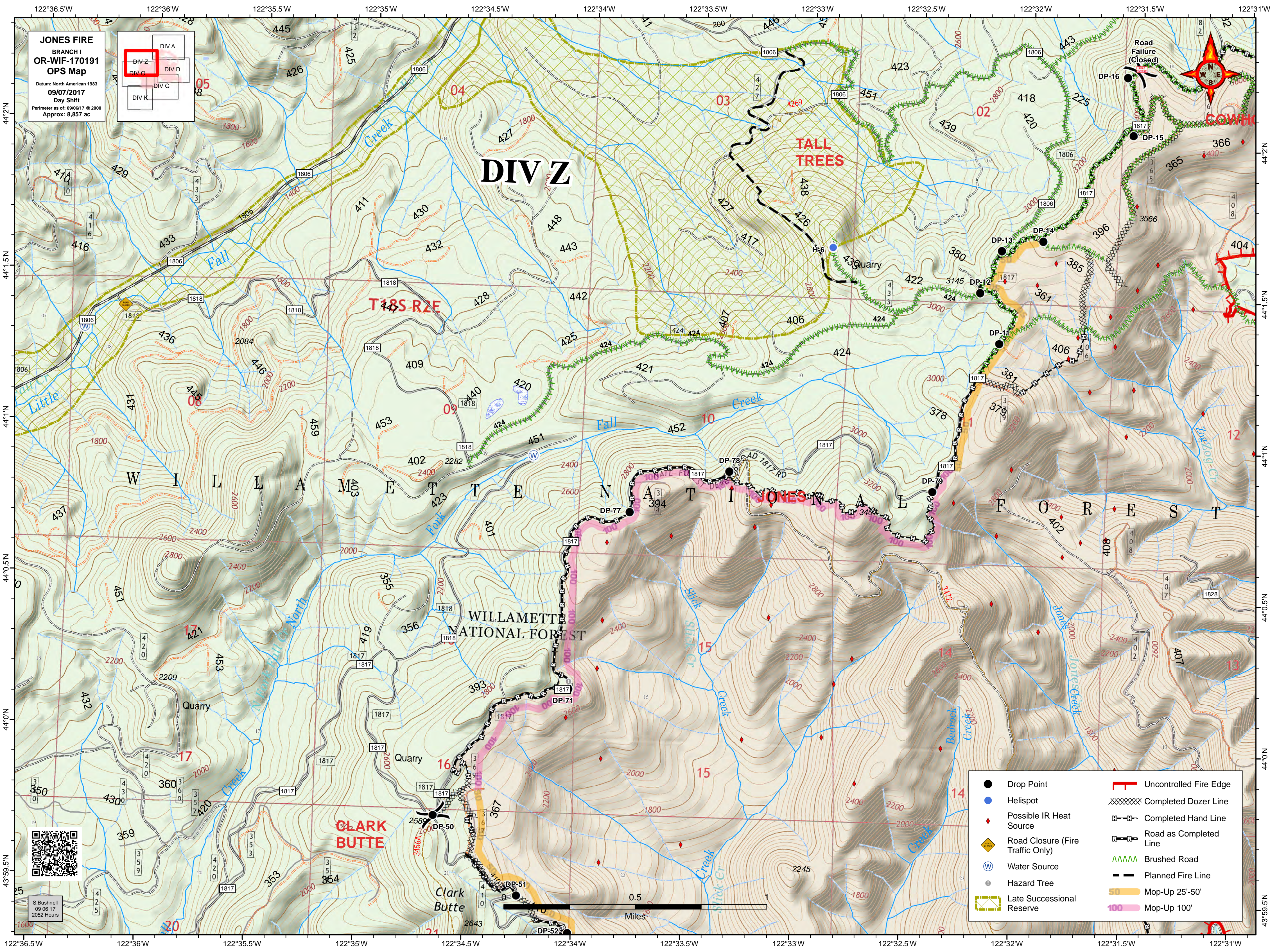
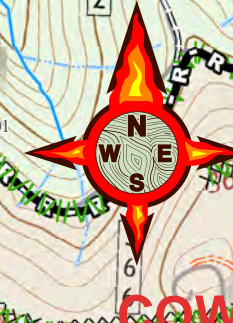
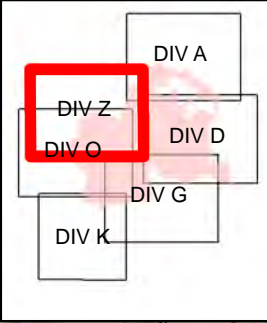


JONES FIRE
 BRANCH I
 OR-WIF-170191
 OPS Map
 Datum: North American 1983
 09/07/2017
 Day Shift
 Perimeter as of: 09/06/17 @ 2000
 Approx: 8,857 ac



- | | |
|------------------------------------|--------------------------|
| ● Drop Point | ▬ Uncontrolled Fire Edge |
| ● Helispot | ▬ Completed Dozer Line |
| ◆ Possible IR Heat Source | ▬ Completed Hand Line |
| ◆ Road Closure (Fire Traffic Only) | ▬ Road as Completed Line |
| ⊙ Water Source | ▬ Brushed Road |
| ● Hazard Tree | ▬ Planned Fire Line |
| ▭ Late Successional Reserve | ▬ Mop-Up 25'-50' |
| | ▬ Mop-Up 100' |



S. Bushnell
 09 06 17
 2052 Hours