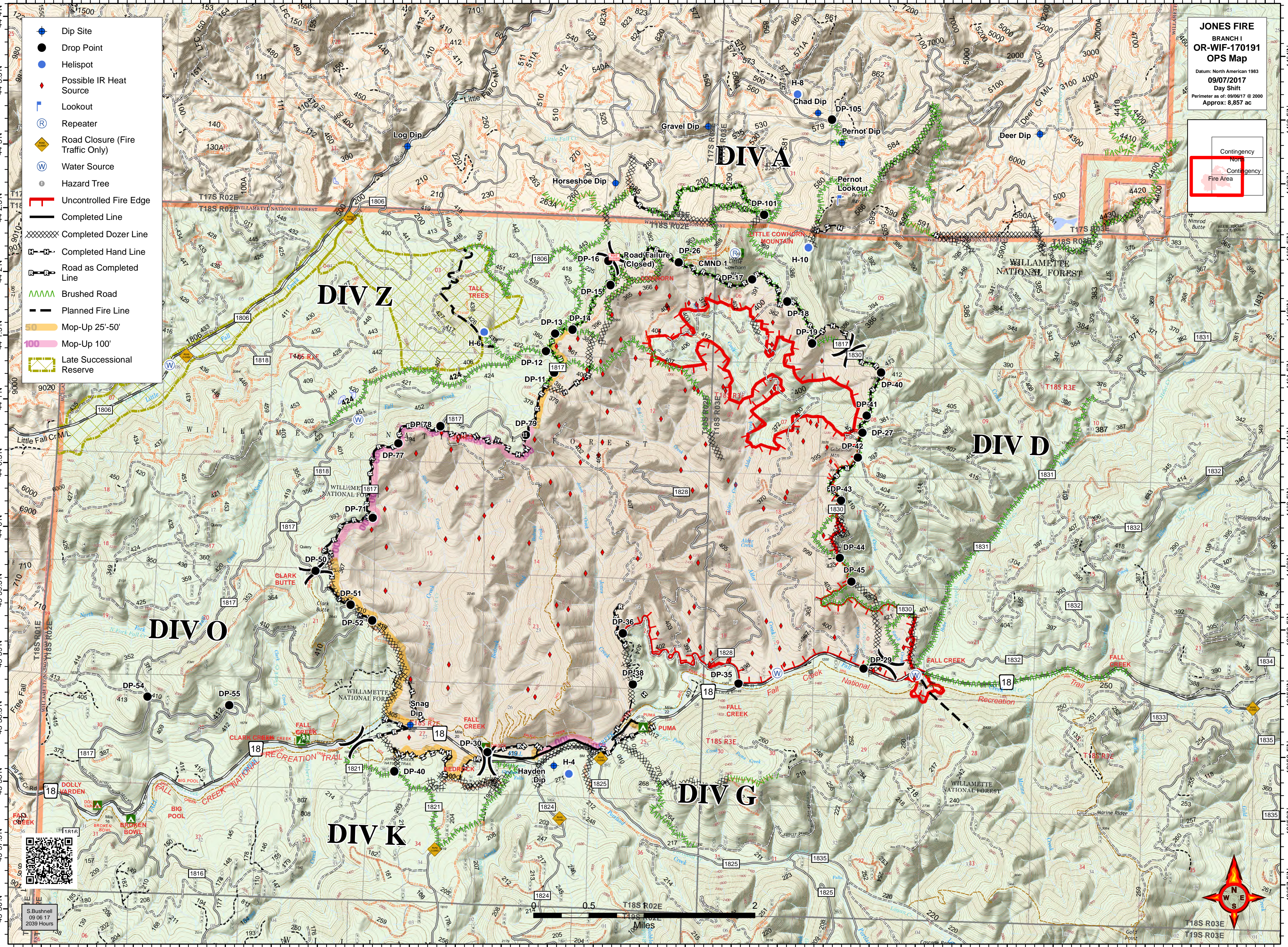
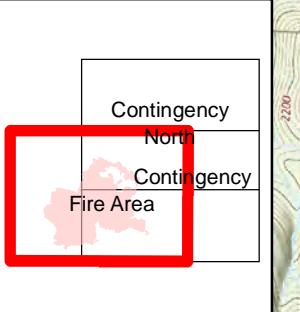


122°38'W 122°37.5'W 122°37'W 122°36.5'W 122°36'W 122°35.5'W 122°35'W 122°34.5'W 122°34'W 122°33.5'W 122°33'W 122°32.5'W 122°32'W 122°31.5'W 122°31'W 122°30.5'W 122°30'W 122°29.5'W 122°29'W 122°28.5'W 122°28'W 122°27.5'W 122°27'W 122°26.5'W 122°26'W 122°25.5'W 122°25'W 122°24.5'W

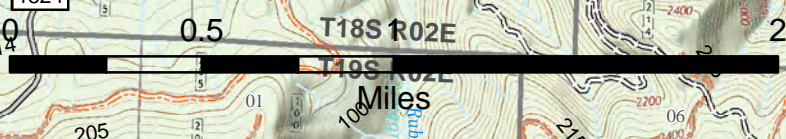


- Dip Site
- Drop Point
- Helispot
- Possible IR Heat Source
- Lookout
- Repeater
- Road Closure (Fire Traffic Only)
- Water Source
- Hazard Tree
- Uncontrolled Fire Edge
- Completed Line
- Completed Dozer Line
- Completed Hand Line
- Road as Completed Line
- Brushed Road
- Planned Fire Line
- Mop-Up 25'-50'
- Mop-Up 100'
- Late Successional Reserve

JONES FIRE
 BRANCH I
 OR-WIF-170191
 OPS Map
 Datum: North American 1983
 09/07/2017
 Day Shift
 Perimeter as of: 09/06/17 @ 2000
 Approx: 8,857 ac



S. Bushnell
 09 06 17
 2039 Hours



122°37.5'W 122°37'W 122°36.5'W 122°36'W 122°35.5'W 122°35'W 122°34.5'W 122°34'W 122°33.5'W 122°33'W 122°32.5'W 122°32'W 122°31.5'W 122°31'W 122°30.5'W 122°30'W 122°29.5'W 122°29'W 122°28.5'W 122°28'W 122°27.5'W 122°27'W 122°26.5'W 122°26'W 122°25.5'W 122°25'W 122°24.5'W