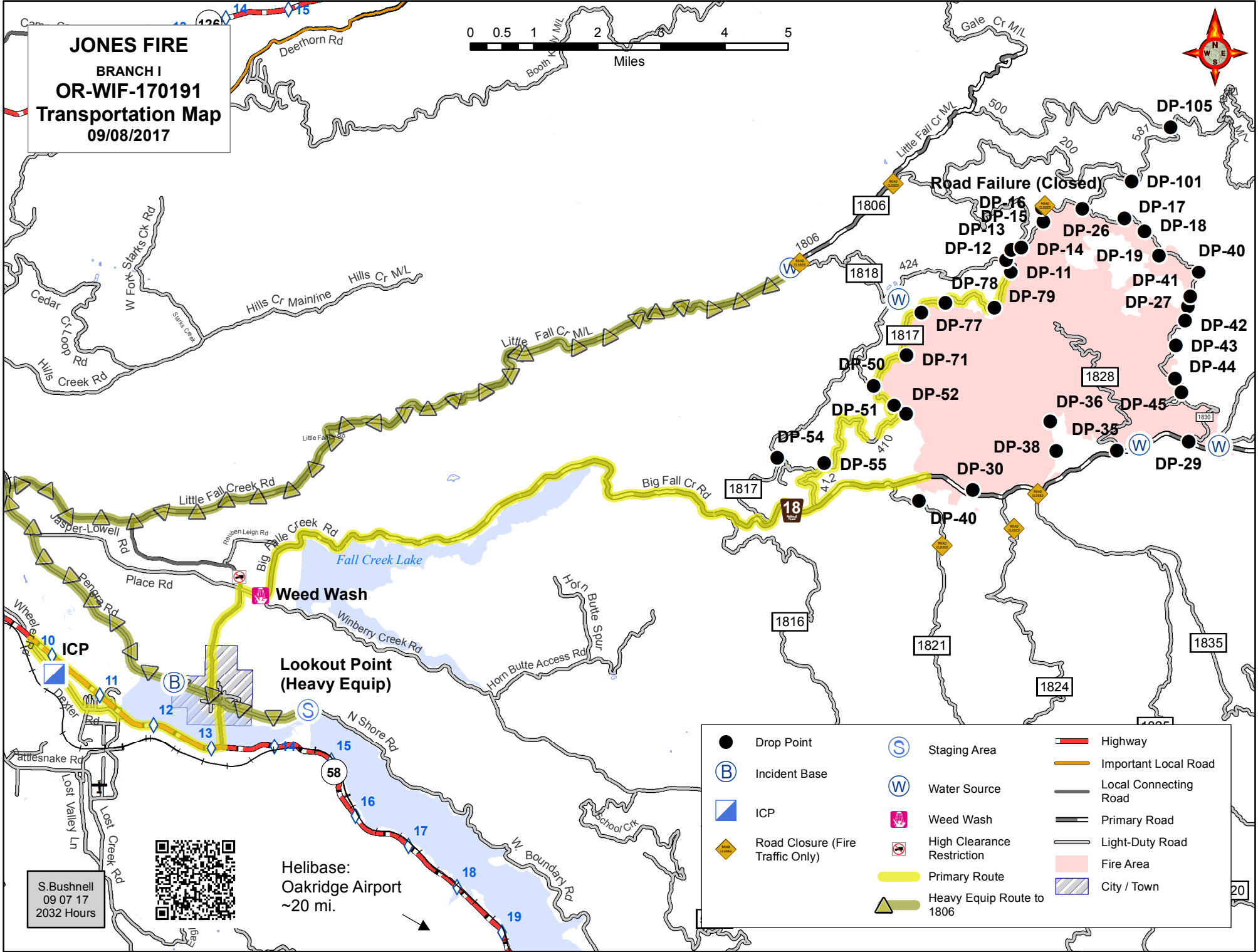


JONES FIRE
BRANCH I
OR-WIF-170191
Transportation Map
09/08/2017



● Drop Point	Ⓢ Staging Area	▬ Highway
ⓑ Incident Base	Ⓦ Water Source	▬ Important Local Road
▬ ICP	Ⓜ Weed Wash	▬ Local Connecting Road
◆ Road Closure (Fire Traffic Only)	Ⓜ High Clearance Restriction	▬ Primary Road
▬ Primary Route	▬ Heavy Equip Route to 1806	▬ Light-Duty Road
		▬ Fire Area
		▬ City / Town

S.Bushnell
 09 07 17
 2032 Hours



Helibase:
 Oakridge Airport
 ~20 mi.