

122°43'W 122°42'W 122°41'W 122°40'W 122°39'W 122°38'W 122°37'W 122°36'W 122°35'W 122°34'W 122°33'W 122°32'W 122°31'W 122°30'W 122°29'W 122°28'W 122°27'W 122°26'W 122°25'W

JONES FIRE

OR-WIF-170191
PILOT Map

09/13/2017
 Approx. 9,367 ac
 Perimeter as of 09/12/17 @ 1750



Declination 14.57° E

0 0.5 1
 Nautical Miles
 1 inch equals 1 nautical miles



TFR 7/5613 (10,000 MSL)

)) Division Break

● Dip Site

● Helispot

Ⓡ Repeater

▲ Aerial Hazard

▭ Fire Area

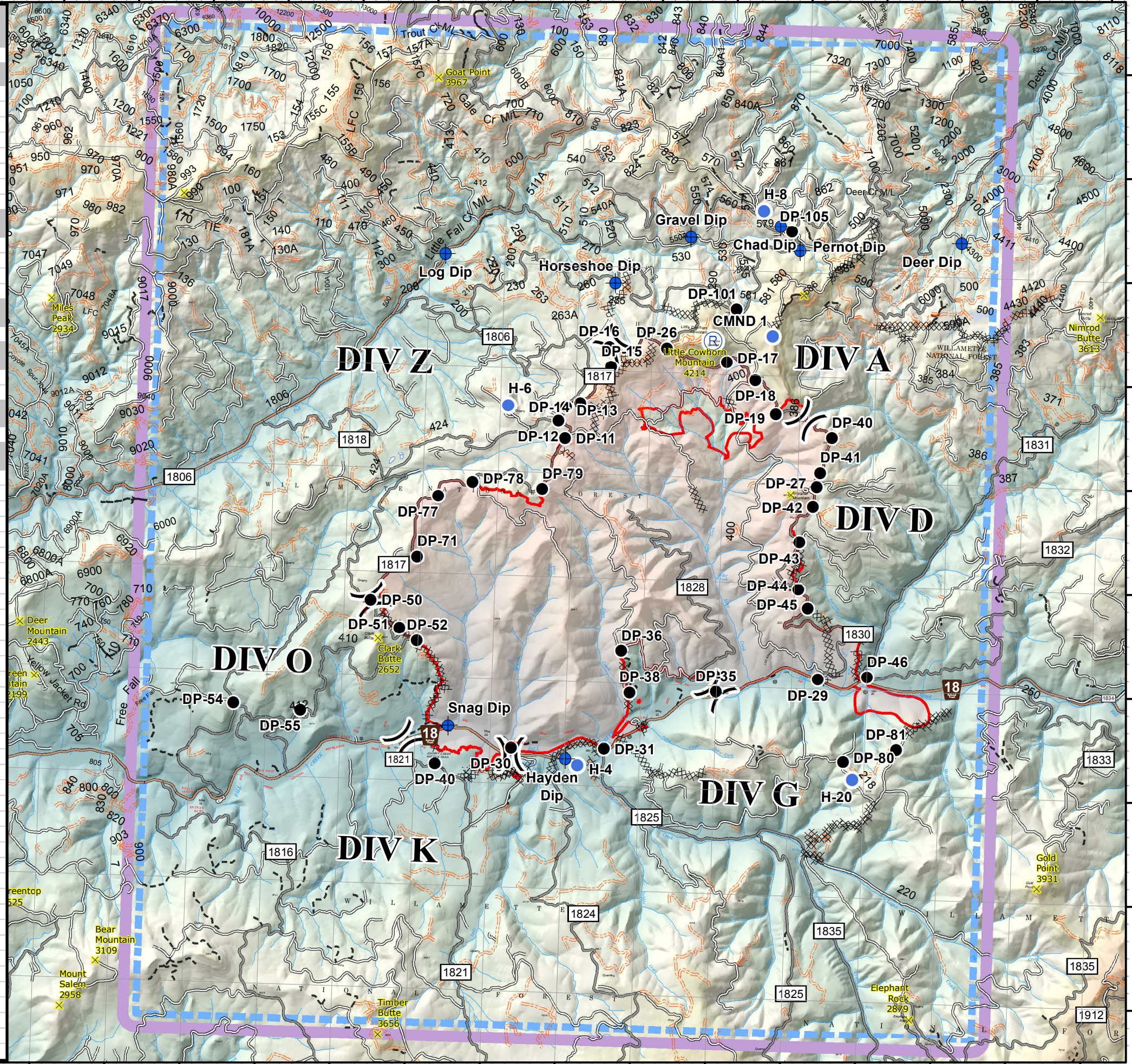
● Drop Point

S.Stitt
 09 12 17
 2112 Hours



Datum: North American 1983

	Latitude	Longitude
Helibase		
Oakridge Airport	43° 45.134'	-122° 29.920'
Dipsite		
Chad Dip	44° 3.443'	-122° 29.333'
Deer Dip	44° 3.330'	-122° 26.911'
Gravel Dip	44° 3.311'	-122° 30.525'
Hayden Dip	43° 58.258'	-122° 31.989'
Horseshoe Dip	44° 2.845'	-122° 31.516'
Log Dip	44° 3.082'	-122° 33.795'
Pernot Dip	44° 3.216'	-122° 29.065'
Snag Dip	43° 58.545'	-122° 33.564'
Helispot		
H-4	43° 58.201'	-122° 31.822'
H-6	44° 1.645'	-122° 32.895'
H-8	44° 3.586'	-122° 29.564'
H-10	44° 2.387'	-122° 29.393'
Incident Base		
Basecamp & ICP	43° 55.080'	-122° 48.820'
Lookout		
Jones Lookout	43° 56.087'	-122° 34.991'
Pernot Lookout	44° 2.767'	-122° 29.093'
Repeater		
CMND 1	44° 2.324'	-122° 30.193'
Drop Point		
DP-11	44° 1.343'	-122° 32.121'
DP-12	44° 1.509'	-122° 32.216'
DP-13	44° 1.650'	-122° 32.122'
DP-14	44° 1.685'	-122° 31.934'
DP-15	44° 2.043'	-122° 31.536'
DP-16	44° 2.234'	-122° 31.569'
DP-17	44° 2.123'	-122° 29.995'
DP-18	44° 1.958'	-122° 29.607'
DP-19	44° 1.636'	-122° 29.322'
DP-26	44° 2.239'	-122° 30.801'
DP-27	44° 0.948'	-122° 28.743'
DP-29	43° 59.096'	-122° 28.651'
DP-30	43° 58.350'	-122° 32.713'
DP-31	43° 58.366'	-122° 31.476'
DP-35	43° 58.950'	-122° 30.007'
DP-36	43° 59.315'	-122° 31.283'
DP-38	43° 58.916'	-122° 31.156'
DP-40	43° 58.176'	-122° 33.720'
DP-41	44° 1.423'	-122° 28.562'
DP-42	44° 0.751'	-122° 28.786'
DP-43	44° 0.410'	-122° 28.953'
DP-44	43° 59.959'	-122° 28.949'
DP-45	43° 59.776'	-122° 28.814'
DP-46	43° 59.131'	-122° 27.996'
DP-50	43° 59.729'	-122° 34.646'
DP-51	43° 59.472'	-122° 34.253'
DP-52	43° 59.354'	-122° 34.014'
DP-54	43° 58.700'	-122° 36.430'
DP-55	43° 58.652'	-122° 35.538'
DP-71	44° 0.160'	-122° 34.044'
DP-77	44° 0.750'	-122° 33.789'
DP-78	44° 0.894'	-122° 33.338'
DP-79	44° 0.847'	-122° 32.406'
DP-80	43° 58.313'	-122° 28.281'
DP-81	43° 58.439'	-122° 27.577'
DP-101	44° 2.632'	-122° 29.886'
DP-105	44° 3.395'	-122° 29.179'



122°42'W 122°41'W 122°40'W 122°39'W 122°38'W 122°37'W 122°36'W 122°35'W 122°34'W 122°33'W 122°32'W 122°31'W 122°30'W 122°29'W 122°28'W 122°27'W 122°26'W 122°25'W