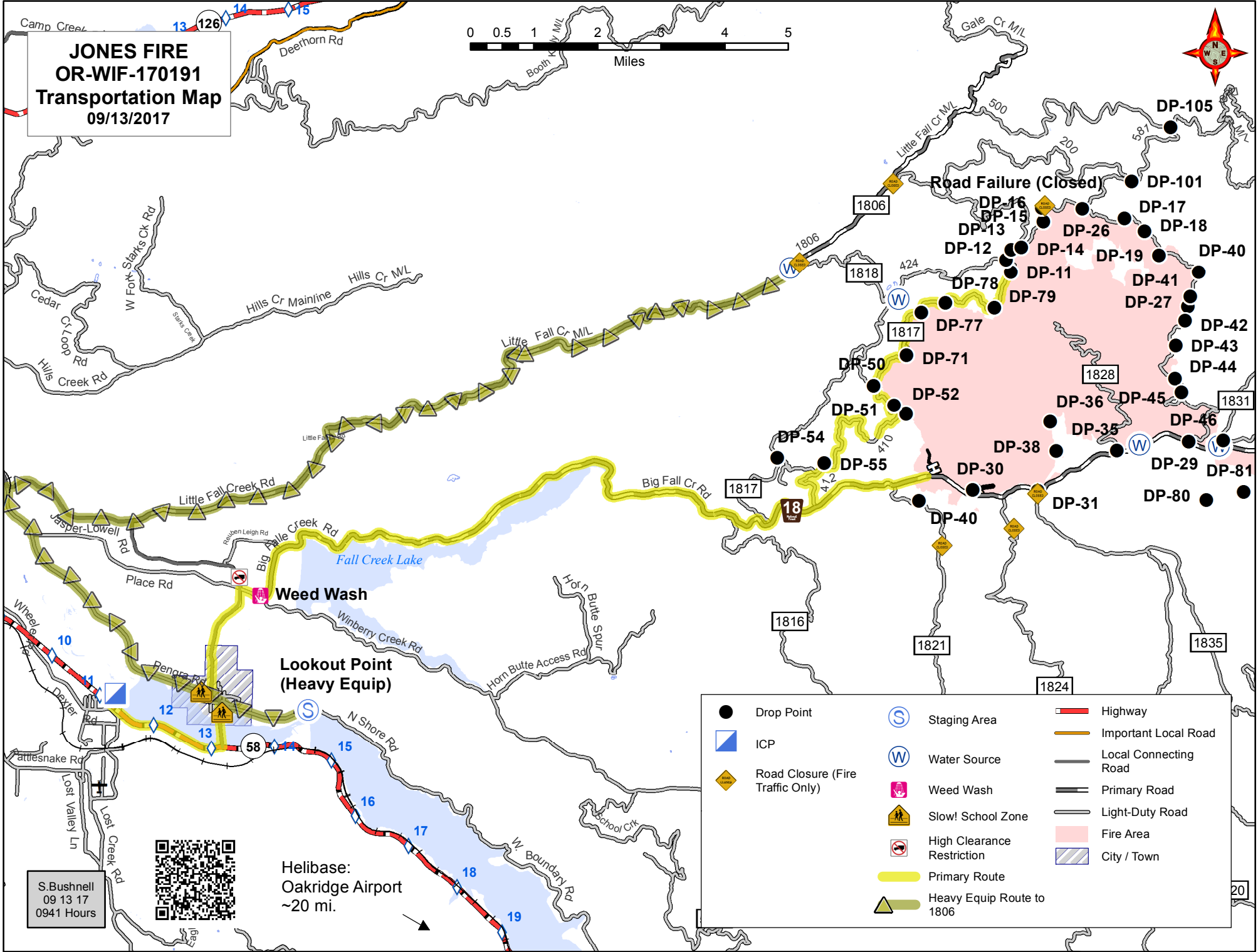


**JONES FIRE
OR-WIF-170191
Transportation Map
09/13/2017**



- | | | | | | |
|---|----------------------------------|---|----------------------------|---|-----------------------|
| ● | Drop Point | Ⓢ | Staging Area | ▬ | Highway |
| ▬ | ICP | Ⓜ | Water Source | ▬ | Important Local Road |
| ◆ | Road Closure (Fire Traffic Only) | Ⓜ | Weed Wash | ▬ | Local Connecting Road |
| ⚠ | Slow! School Zone | Ⓜ | High Clearance Restriction | ▬ | Primary Road |
| ⚠ | High Clearance Restriction | ▬ | Primary Route | ▬ | Light-Duty Road |
| ▬ | Primary Route | ▬ | Heavy Equip Route to 1806 | ▬ | Fire Area |
| ▬ | Heavy Equip Route to 1806 | ▬ | City / Town | ▬ | City / Town |

Helibase:
Oakridge Airport
~20 mi.

S. Bushnell
09 13 17
0941 Hours

