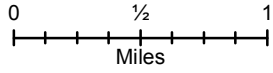


JONES FIRE
Public Information Map
09/15/2017
Approx: 9,462 ac
as of 9/14/2017 at 1600



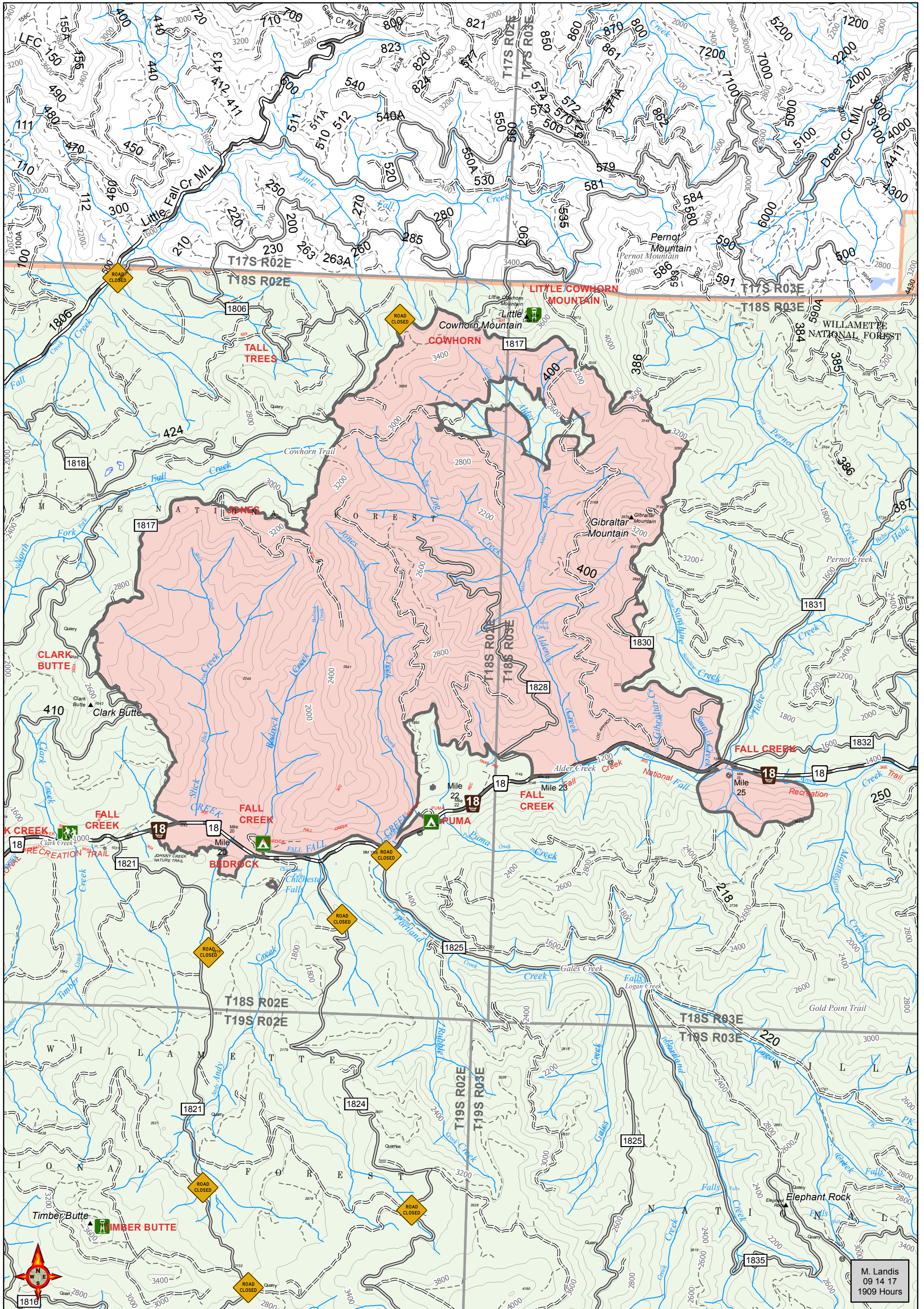
- Fire Area
- US Forest Service
- Contours 100-foot
- Road Closure (Fire Traffic Only)
- Highway
- Primary Road
- Light-Duty Road
- Unimproved Road
- Closed Road



Disclaimer:

While Gila Las Cruces T3 makes every effort to represent the data shown on these maps as completely and accurately as possible, no warranty is given, expressed or implied, as to the accuracy, reliability, or completeness of these data. In addition, Gila Las Cruces T3 and/or other participating agencies shall not be held liable for improper or incorrect use of the data described and/or contained herein. Graphical representations provided by the use of this data does not represent any legal description of the data herein and are provided only as a general representation of the data. No indication/statement of fire containment is given, expressed or implied by this product.

More Information:
<http://inciweb.nwcg.gov>



M. Landis
 09 14 17
 1909 Hours