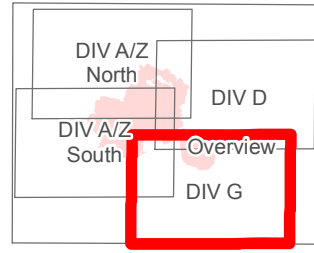
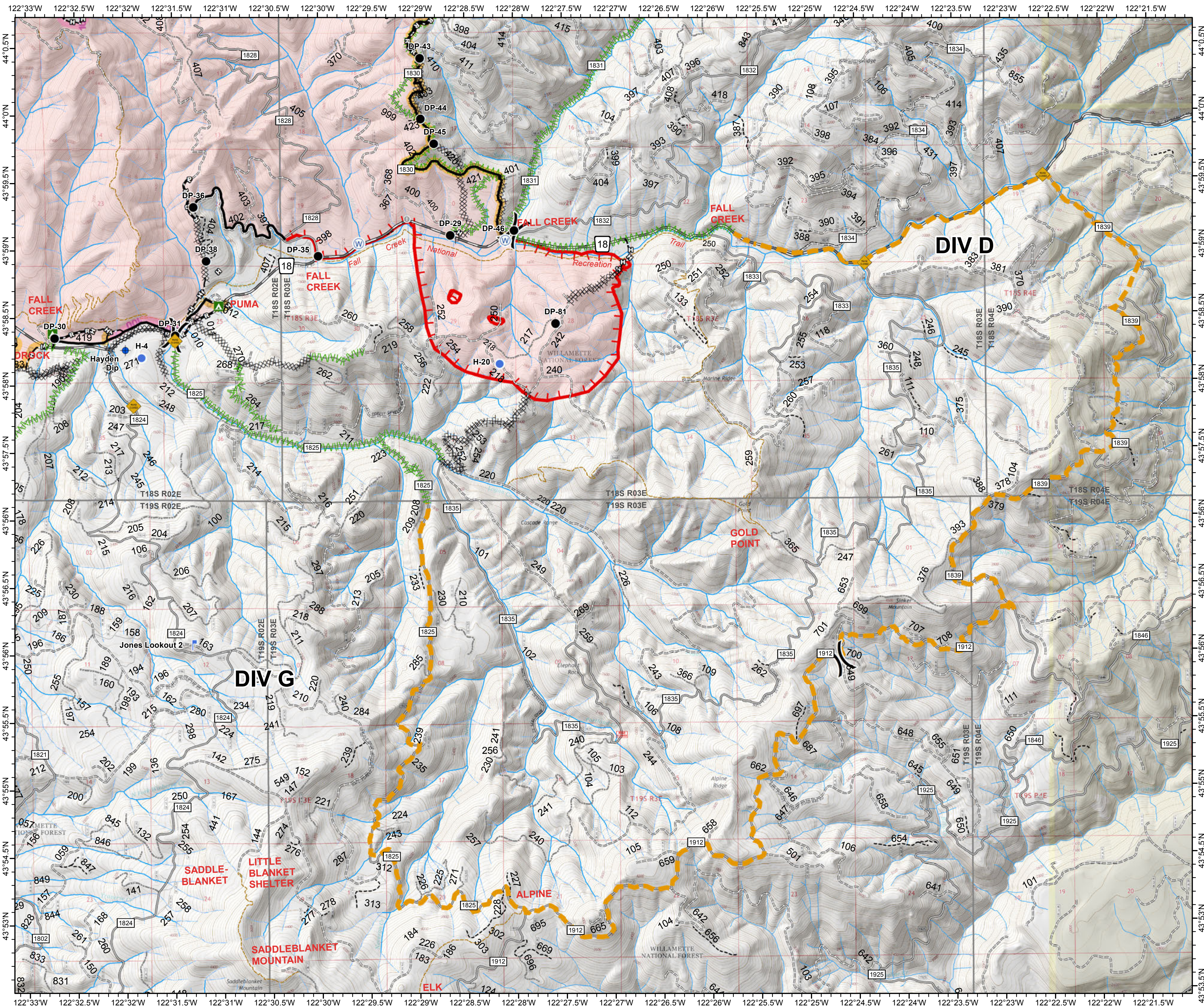
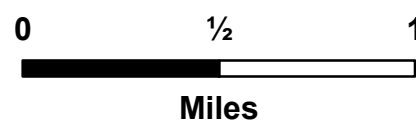


JONES FIRE OR-WIF-170191 OPS By Division

Datum: North American 1983
09/19/2017
Day Shift
Perimeter as of: 09/17/17 @ 2329
Approx: 10,514 ac

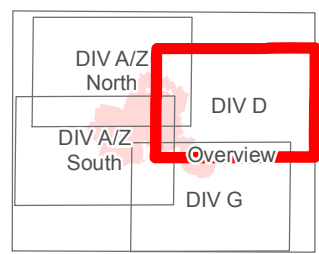


- Dip Site
- Drop Point
- Helispot
- Lookout
- Road Closure (Fire Traffic Only)
- Water Source
- Hazard Tree
- Uncontrolled Fire Edge
- Completed Line
- Completed Dozer Line
- Completed Hand Line
- Road as Completed Line
- Brushed Road
- Planned Fire Line
- Mop-Up 25'-50'
- Mop-Up 100'

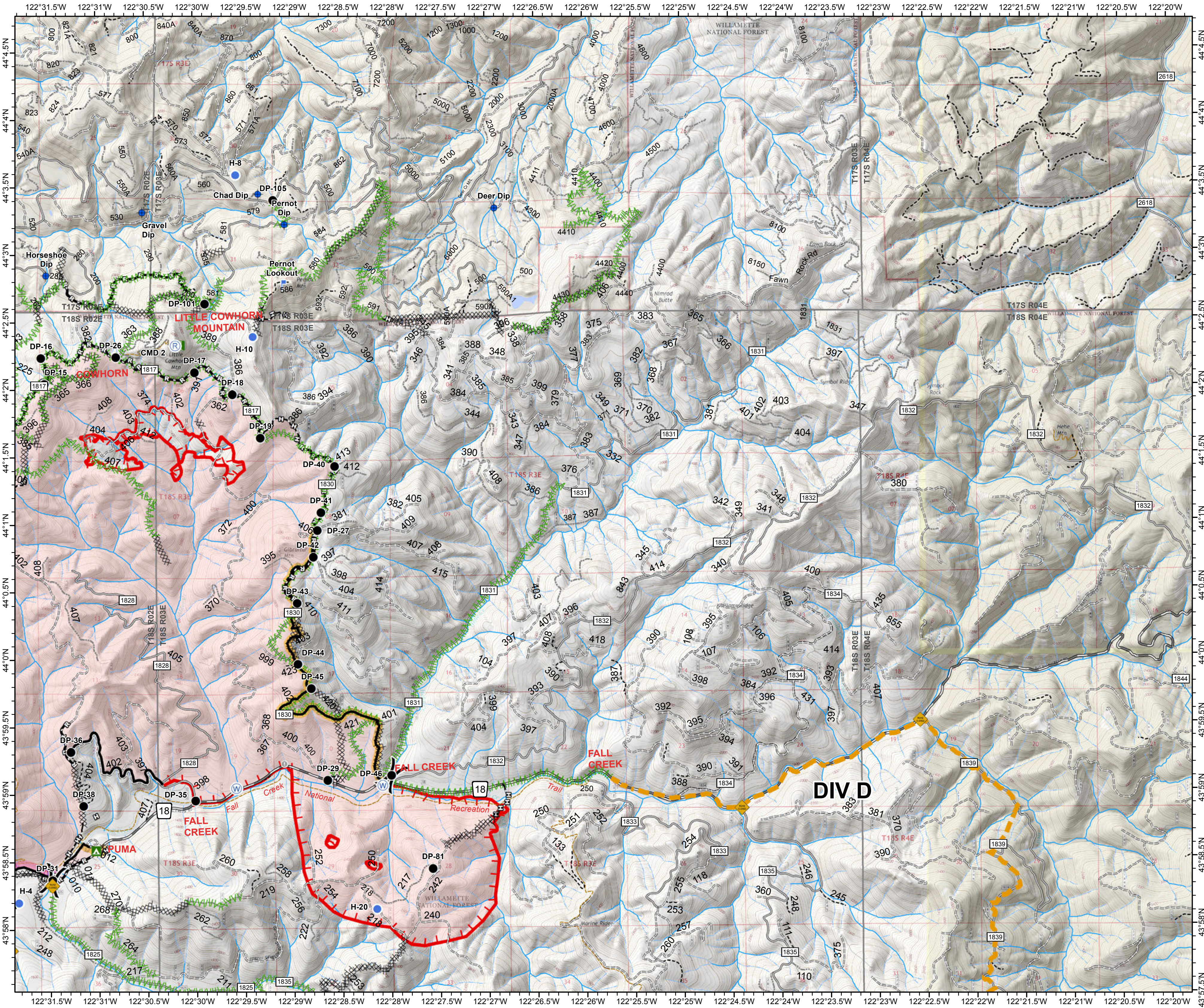
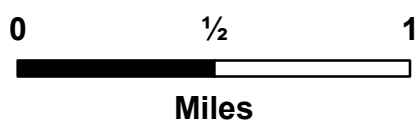


JONES FIRE OR-WIF-170191 OPS By Division

Datum: North American 1983
09/19/2017
Day Shift
Perimeter as of: 09/17/17 @ 2329
Approx: 10,514 ac

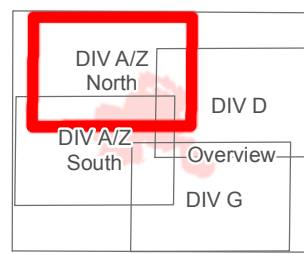


- Dip Site
- Drop Point
- Helispot
- └─┘ Lookout
- Ⓡ Repeater
- ◆ Road Closure (Fire Traffic Only)
- Ⓜ Water Source
- Hazard Tree
- └─┘ Uncontrolled Fire Edge
- Completed Line
- ▤▤▤▤ Completed Dozer Line
- └─┘ Completed Hand Line
- └─┘ Road as Completed Line
- ▬▬▬▬ Brushed Road
- ▬▬▬▬ Planned Fire Line
- ▬▬▬▬ Mop-Up 25'-50'
- ▬▬▬▬ Mop-Up 100'

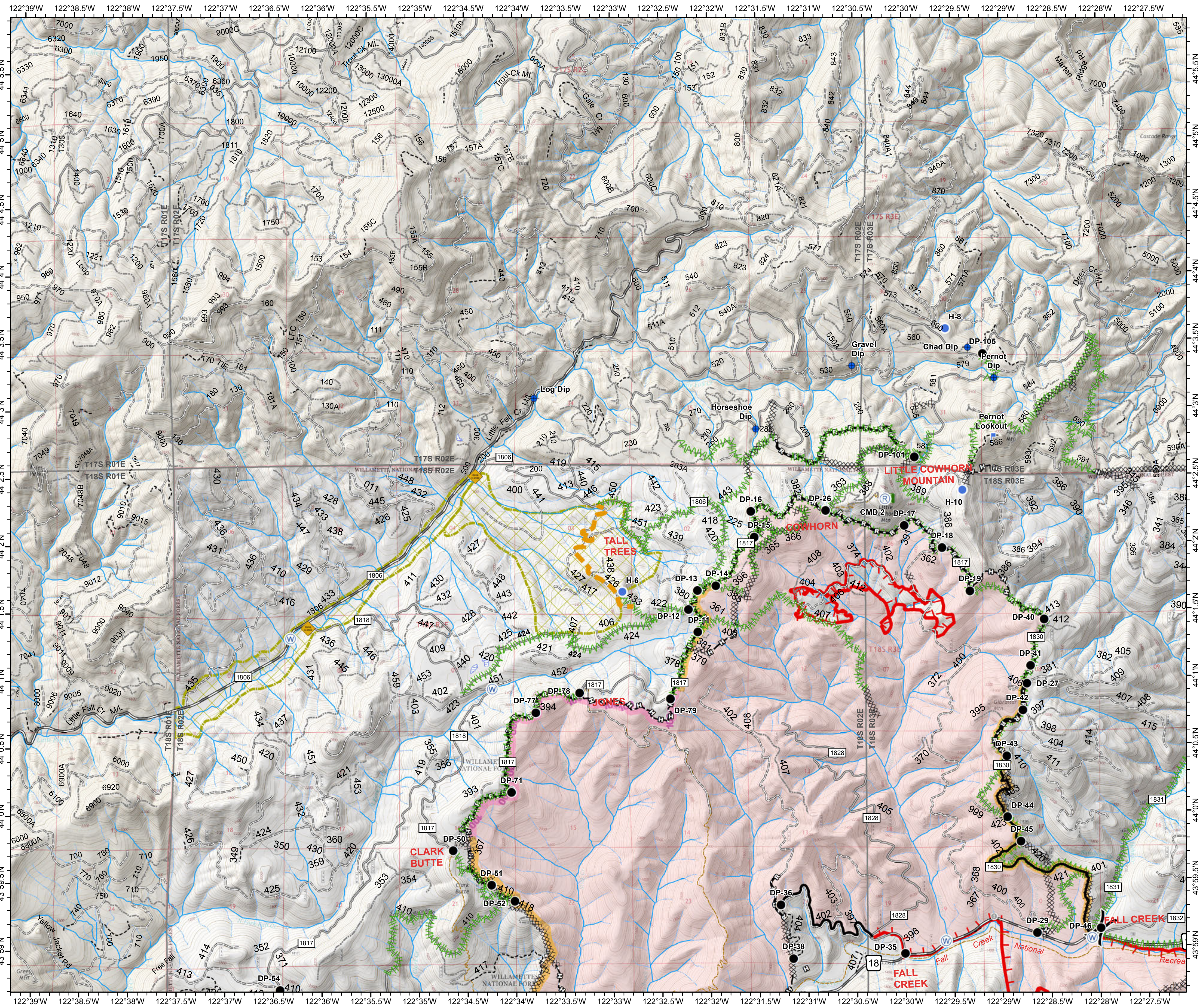
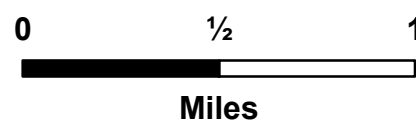


JONES FIRE OR-WIF-170191 OPS By Division

Datum: North American 1983
09/19/2017
Day Shift
Perimeter as of: 09/17/17 @ 2329
Approx: 10,514 ac

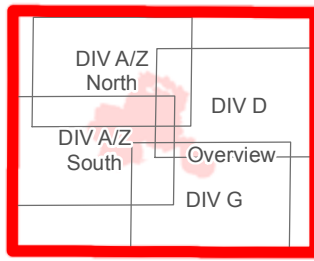


- Dip Site
- Drop Point
- Helispot
- Lookout
- Repeater
- Road Closure (Fire Traffic Only)
- Water Source
- Hazard Tree
- Late Successional Reserve
- Uncontrolled Fire Edge
- Completed Line
- Completed Dozer Line
- Completed Hand Line
- Road as Completed Line
- Brushed Road
- Planned Fire Line
- Mop-Up 25'-50'
- Mop-Up 100'



JONES FIRE OR-WIF-170191 OPS By Division

Datum: North American 1983
09/19/2017
Day Shift
Perimeter as of: 09/17/17 @ 2329
Approx: 10,514 ac



- Dip Site
- Drop Point
- Helispot
- Lookout
- Repeater
- Road Closure (Fire Traffic Only)
- Water Source
- Hazard Tree
- Late Successional Reserve
- Uncontrolled Fire Edge
- Completed Line
- Completed Dozer Line
- Completed Hand Line
- Road as Completed Line
- Brushed Road
- Planned Fire Line
- Mop-Up 25'-50'
- Mop-Up 100'

